



WASZP Games 2025

Notice to Competitors

Number: 04

No Transiting through the RNSA Moorings & Portland Harbour Speed Limits

Source: Organizing Authority

Venue: Weymouth and Portland National Sailing Academy

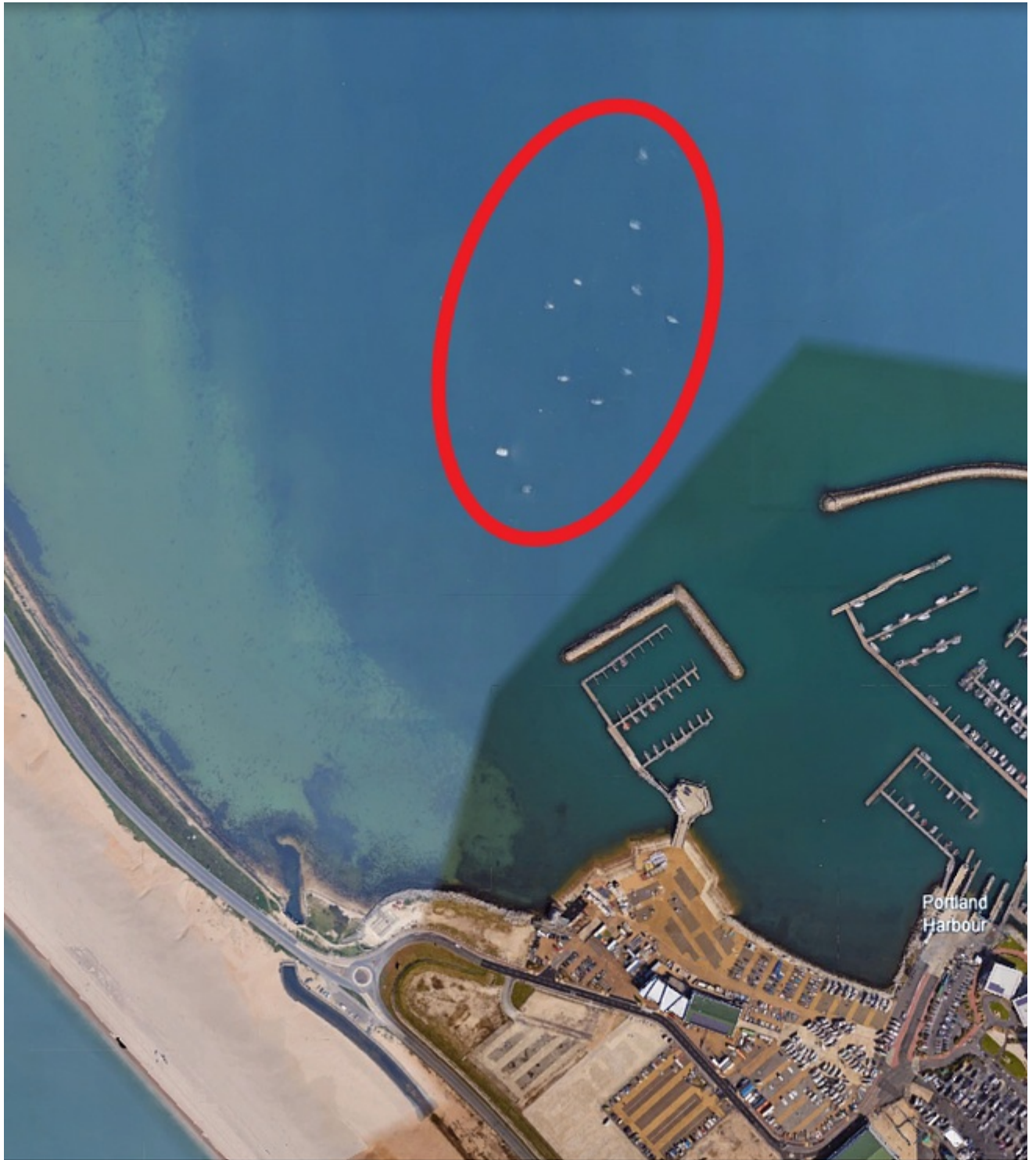
Published: 2025-07-20 17:15

Notice:

RNSA Moorings

All competitors, coaches and support person vessels attention is drawn to Sailing Instruction 12.5.

You are not permitted to transit through the Royal Naval Sailing Association (RNSA) moorings to the west of the entrance and exit to Portland Marina, as shown in the image below.



[RNSA Moorings](#)

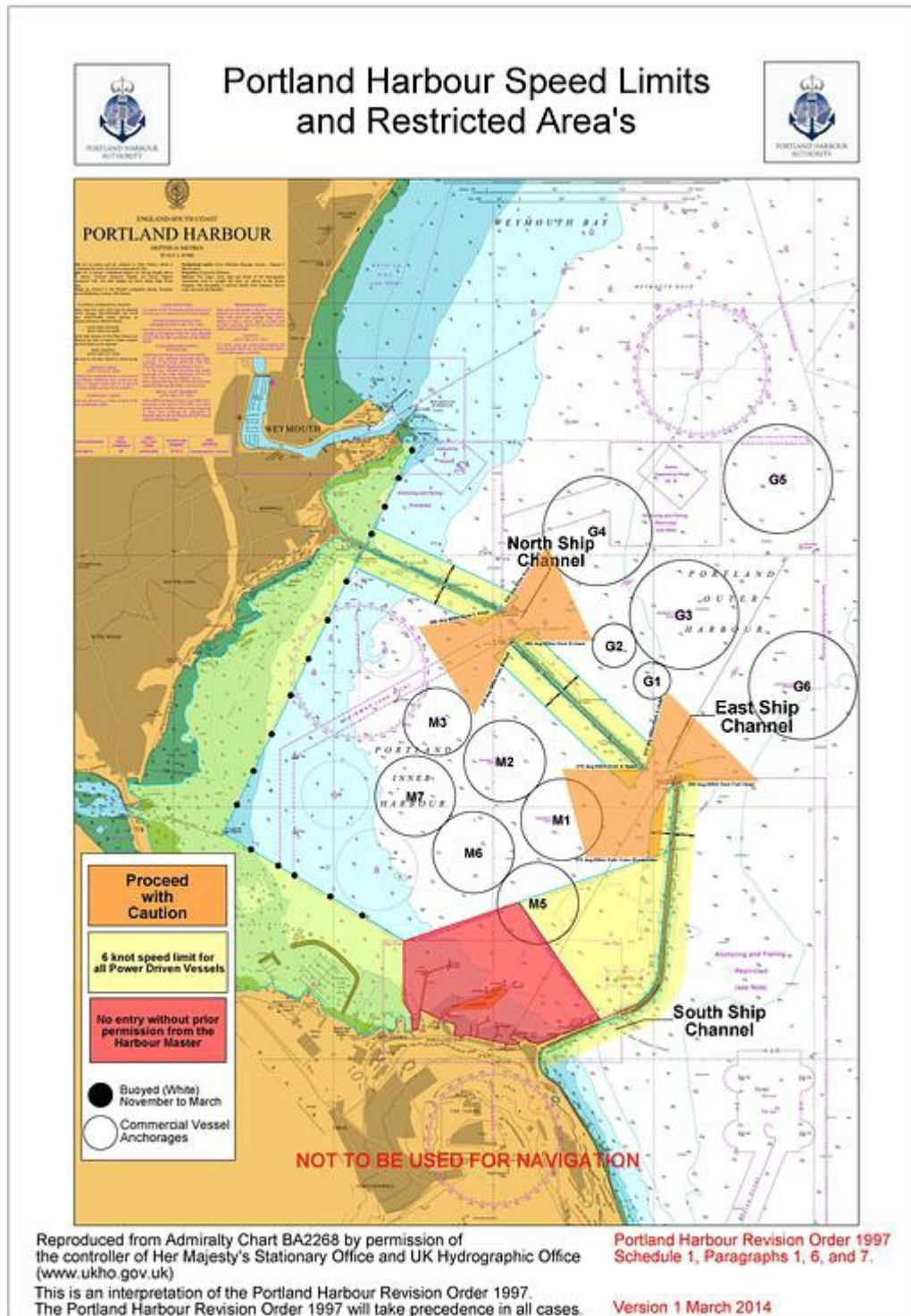
Portland Harbour

Portland Harbour is a working commercial port and therefore has certain restrictions in place:

- The maximum speed in the **marina** is **4 knots** (under sail or power)
- The maximum speed in the **yellow areas** is **6 knots** (under power or sail)
- You are not allowed to transit through the **East Ship Channel** without permission from Portland Harbour Authority (VHF Ch. 74)

- You must keep a minimum of **100m distance** from any **anchored ships**
- You are **not permitted** to enter the **red areas** on the chart below

These restrictions are in place for everyone's safety. Unfortunately, there was a fatality in Portland Harbour on 16th July. The Harbour Master will fine anyone who disobeys the rules.



[Portland Harbour Speed Limits & Restricted Areas.jpg 1.43 MB](#)