



THE SINGAPORE REGATTA 2022

23 & 24 JULY 2022

Singapore Sailing Federation

Changi Sailing Club & Republic of Singapore Yacht Club
Singapore

SAILING INSTRUCTIONS (SI)

The Organising Authority (OA) is the Singapore Sailing Federation (SSF) in association with Changi Sailing Club (CSC) and Republic of Singapore Yacht Club (RSYC).

The event website will be at: <https://events.sailing.org.sg/events/singapore-regatta-2022/>

NOR Document link <https://events.sailing.org.sg/wp-content/uploads/2022/06/Singapore-Regatta-NOR-Brochure-compressed.pdf>

1. RULES

- 1.1. The event is governed by the rules as defined in *The Racing Rules of Sailing (RRS)*. Other documents under RRS Definition: Rule (g) includes:

1.1.1. **[NP] COVID-19 PROTOCOLS & SAFE MANAGEMENT MEASURES**

[DP][NP] Protocols relating to Covid-19 may be published at any time and will state if they have the status of a rule.

1.1.2. **SINGAPORE LAW**

The Notice of Race & Sailing Instructions, and the terms of the contract created by the acceptance of a boat's entry in any race or event governed by the Notice of Race & Sailing Instructions, shall be governed by and construed in accordance with Singapore law. Any dispute which cannot be resolved under Part 5 of the Racing Rules of Sailing shall be referred to the exclusive jurisdiction of the Singapore Courts.

1.1.3. **MARITIME AND PORT AUTHORITY**

Boats shall comply with the laws and regulations of the Maritime Port Authority of Singapore ("MPA"). Boats reported by MPA as having contravened MPA's regulations shall be disqualified without a hearing. This changes RRS 63.1 and A5.

1.1.4. **INTERNATIONAL REGULATIONS FOR PREVENTING COLLISIONS AT SEA**

The rules of RRS part 2 are replaced by the right- of-way rules of the International Regulations for Preventing Collisions at Sea (IRPCAS), or by government right of way rules, between the times 1900h and 0700h.

1.1.5. **SAILING INSTRUCTIONS**

Where there is a conflict between the Notice of Race and the Sailing Instructions, the Sailing Instructions shall prevail. This changes RRS 63.7.

1.1.6. **ADVERTISING**

Boats may be required to display advertising chosen and supplied by the Organising Authority.

- 1.2. In all rules governing this event, the notations:

1.2.1. The notation [SP] means that a standard penalty may be applied by the Race Committee without a hearing or a discretionary penalty applied by the Protest Committee with a hearing. This changes RRS 63.1, A5.1 and A5.2.

1.2.2. The notation [NP] means that a boat may not protest another boat for breaking that rule. This changes RRS 60.1(a).

- 1.3. [DP] The penalty for a breach of the class rules may, at the discretion of the Protest Committee, be less than a disqualification.
- 1.4. [NP] The infringement of RRS Appendix G, IDENTIFICATION ON SAILS, shall not be grounds for protests by a boat.
- 1.5. If there is a conflict between languages the English text will take precedence.

2. CHANGES TO SAILING INSTRUCTIONS

- 2.1. Any change to the Sailing Instructions will be posted at least 30 minutes before the first warning signal on the day it will take effect, except that any change to the schedule of races will be posted no later than 1800hr on the day before it will take effect.
- 2.2. The Race Committee may issue amendments to the Sailing Instructions after the start signal and during the race. In these cases, they will use the best possible means to communicate any changes to all boats and wherever possible, obtain confirmation that the changes have been received and understood by all Skippers. The Race Committee may broadcast information on VHF Ch.77.

3. COMMUNICATION WITH COMPETITORS

- 3.1. Notices to competitors will be posted on the Official Notice Board located online at <https://events.sailing.org.sg/events/singapore-regatta-2022/?occurrence=2022-07-23>. All links on this page which open to subsidiary pages of the event are also a part of the Official Notice Board.
- 3.2. Notices may also be posted on a secondary physical notice board which will be nearby the Race Secretariat desk. Failure to post a notice on the physical notice board will not be grounds for redress. This changes RRS 62.1(a).
- 3.3. On the water, the race committee intends to monitor and communicate with competitors on VHF radio channel 77.
- 3.4. At the Start
 - 3.4.1. The Race Committee may broadcast information on VHF Ch.77 at the start.
 - 3.4.2. Boats are strongly recommended to listen to the Race Committee until clear of the starting line. Recall information (sail numbers and/or boat names of OCS boats) may be announced as soon as possible. In the first 5 minutes after the starting signal of their class, boats shall not communicate on VHF Ch. 77 except in an emergency.
 - 3.4.3. VHF Ch.77 - A boat may, without infringing RRS41 (Outside Help), request and receive repetition of information broadcast by the Race Committee or enquire whether or not a broadcast has been made. VHF Ch.77 is the designated calling channel when contacting the Race Committee.
- 3.5. At the Finish
 - 3.5.1. VHF Ch.77 - The Race Committee may broadcast information on VHF Ch.77 at the finish.
 - 3.5.2. Boats are strongly recommended to listen to the Race Committee until clear of the finish area.
- 3.6. At All Other Times
 - 3.6.1. [DP] While racing, except in an emergency and as permitted in NoR XI and this Sailing Instructions, a boat shall not make voice or data transmissions and shall not receive voice or data communication that is not available to all boats.
 - 3.6.2. Inter-boat communication calls should, when possible, be on VHF Ch.77 as a calling Channel.
 - 3.6.3. Boats with communications in addition to VHF should act as a link, taking other boats' reports on VHF and passing them to the Race Committee or the local authority when requested or called upon to do so.
 - 3.6.4. Onboard Mobile – Boats are reminded to monitor their nominated onboard mobile phone. This may be used by the Race Committee for contact in an emergency situation.

4. [DP][NP] CODE OF CONDUCT

- 4.1. [DP] Competitors and support persons shall comply with any reasonable requests from race officials.
- 4.2. [DP] Competitors and support persons shall handle any equipment including battle flags provided by the organising authority with care, seamanship, in accordance with any instructions for its use and without interfering with its functionality.

- 4.3. Reasonable actions by event officials to implement COVID-19 guidance, protocols or legislation, even if they later prove to have been unnecessary, are not improper actions or omissions.

5. SIGNALS MADE ASHORE

- 5.1. Signals made ashore will be displayed on the official flagstaff located at the Changi Sailing Club jetty.
- 5.2. When flag AP is displayed ashore, "1 minute" is replaced with "not less than 30 minutes" in the Race Signals AP.






6. SCHEDULE OF RACES

- 6.1. The schedule of activities will be as follows:

DATE	TIME	EVENT
24 May 2022	0900	Entry Opens
12 July 2022	2359	Closing Date
15 July 2022	2359	Rating/Handicap Deadline
23 July 2022	1600	Mandatory Skipper's Briefing, Registration & Battle Flags Distribution (Changi Sailing Club)
23 July 2022	1800	SR22 Opening Ceremony & Evening Cocktail (Changi Sailing Club)
24 July 2022	0500 - 0700	Immigration clearance at Changi Sailing Club*
24 July 2022	0755	First Possible Warning Signal for all classes (Changi Sailing Club)
24 July 2022	1700 - 1900	Immigration clearance at RSYC*
24 July 2022	1930	Prize Giving Ceremony (Republic of Singapore Yacht Club)

*Applicable to IRC / Multihull race course area only

7. CLASS FLAGS

CLASS/DIVISION	DESCRIPTION	REMARKS
IRC		SR insignia with blue background
Multihull		SR insignia with grey background
PY Class		SR insignia with orange background
One-Design (SB20)		SR insignia with turquoise background
One-Design (OBS Cutter)		SR insignia with yellow background

One-Design (Beach Cat)		SR insignia with green background
------------------------	---	-----------------------------------

8. RACING AREA

8.1. Addendum 1 (Course Area Book) shows the location of the racing areas.

8.1.1. Addendum 1(a) – IRC Class & Multihull Class Passage Race course

8.1.2. Addendum 1(b) – PY & SB20 Class Passage Race course

8.1.3. Addendum 1(c) – Cutter & Beach Catamaran Class Passage Race course

9. COURSES & MARKS

9.1. The diagrams in Addendum 1 shows the Courses & Marks, including the GPS coordinates, the order in which Marks are to be passed, and the side on which each Mark is to be left.

9.2. For IRC and Multihull classes only, the race course may be amended to have the finishing line moved to a new location due to poor weather or time limitation:

9.2.1. If by 1500hr, the leading boat for each class has not passed transit trajectory points between:

9.2.1.1. Tembakul beacon (red lateral tower, east of Sakijang) 1° 13.341'N / 103° 51.755'E (Lat/Long)

9.2.1.2. Seringat beacon (red lateral pile, east of Seringat) 1° 13.941'N / 103° 51.495'E (Lat/Long)

9.2.2. The diagram in Addendum 2 shows the trajectory points and intended location of the new Finishing Line:

9.2.2.1. Pulau Sakijang Bendera (St John Island) Tower: 1° 12.834'N / 103° 51.093'E (Lat/Long)

9.2.2.2. Finishing boat displaying Blue Flag: 1° 12.704'N / 103° 50.880'E (Lat/Long)

9.2.3. When the finishing line is moved as per SI 9.2, checkpoint 9 of the original course is deleted. Boats shall finish the race at the new Finishing Line as per SI 9.2.2 from the last Checkpoint 8 (Eastern buoy).

9.2.4. When the finishing line is moved as per SI 9.2, the Race Committee will inform the affected boats over VHF Ch.77 and WhatsApp Messages.

10. THE START

10.1. The starting line at Changi Sailing Club will be between a staff displaying an orange flag on the starting mark at the starboard end (CSC Jetty) and the course side of the port-end starting mark (CSC1 ODM).

10.2. [DP][NP] Boats whose warning signal has not been made shall avoid the starting area during the starting sequence for other races and shall stay in the holding area and away from boats that are starting or manoeuvring around the starting area to prepare for the start.

10.3. If any part of a boat's hull is on the course side of the starting line during the two minutes before her starting signal and she is identified, the race committee will attempt to broadcast her sail number on VHF Ch. 77. Failure to make a broadcast or to time it accurately, or the order in which boats are hailed, will not be grounds for a request for redress. This changes RRS 62.1(a).

10.4. A boat that does not start within 30 minutes after her starting signal will be scored Did Not Start (DNS) without a hearing. This changes RRS A5.1 and A5.2.

11. THE FINISH

11.1. The finishing line is between a staff displaying a blue flag on the finishing mark at the starboard end and the course side of the port end finishing mark as described or shown in Addenda 1 and 2.

11.2. If the race committee is absent when a boat finishes, she should report her finishing time, and her position and in relation to nearby boats, to the race committee at the first reasonable opportunity.

11.3. [DP] When boats are finishing, boats who have finished shall avoid the finishing area, keeping well clear of all boats racing, and shall not act to interfere with a boat that has not finished.

12. PENALTY SYSTEM

- 12.1. RRS 44.1 is changed so that the Two-Turns Penalty is replaced by the One-Turn Penalty.
- 12.2. A Scoring Penalty shall be 10% of the elapsed time for Handicapped Rating classes or 20% of the score for Did Not Finish, rounded to the nearest whole number (rounding 0.5 upward) for One design classes.
- 12.3. The Race Committee shall, without a hearing, apply a Scoring Penalty to an OCS boat that fails to start correctly, or a boat that does not comply with RRS 30. This changes RRS 28 and A5.2.
- 12.4. A boat may use its engine to move from the path of a commercial craft or to ensure that a safe working distance is kept from that craft or such that a boat that is aground or has fouled an object may use its engine to get free. The engine shall be used for the minimum time and distance and without gaining a significant advantage in the race.
- 12.5. A boat that uses its engine, as permitted in SI 12.4, shall submit a detailed report to the Race Committee within the protest time limit. If the Race Committee so decides, additional time may be added to its elapsed time or additional places for that race without a hearing. This changes RRS 63.1 and A5.
- 12.6. The Race Committee may apply a Scoring Penalty to a boat that fails to lodge the report as required in SI 12.5. This changes RRS 63.1 and A5.
- 12.7. The penalty for a boat that breaks one or more rules of RRS Part 2 in an incident or may have broken RRS 31 and does not take an appropriate penalty, shall be a Scoring Penalty, except if the boat caused injury or serious damage or gained a significant advantage in the race by her breach in which case the penalty may instead be disqualification. This changes RRS 63.1, 64, and A5.
- 12.8. Unless otherwise detailed in this SI 12, the protest committee may apply a discretionary scoring or time penalty in lieu of disqualification for an infringement of a rule.
- 12.9. The imposition of penalties will affect the placings of other boats, which shall be advanced to fill all preceding places vacated by penalised boats. If two or more boats share the same placing after the application of penalties, the boat(s) with the least or no penalty shall be placed above the boat(s) with the greatest penalty. This changes RRS 44.3(c).

13. TIME LIMITS AND TARGET TIMES

- 13.1. The Race Time Limits are as follows:

CLASS/DIVISION	TARGET TIME	TIME LIMIT (RRS35)	FINISHING TIME LIMIT
IRC / Multihull	8hr	1600hr	1600hr
PY Class	6hr	1600hr	1600hr
Beach Catamaran / Cutter	5hr	1400hr	1400hr
SB20	6hr	1600hr	1600hr

- 13.2. Failure to meet the Target Time will not be grounds for redress. This changes RRS 62.1(a).
- 13.3. Boats shall finish no later than the Finishing Time Limit on 24 July 2022. Boats failing to finish by the Finishing Time Limit, and not subsequently retiring, penalised or given redress, will be scored DNF without a hearing. This changes RRS 35 and A5.1.
- 13.4. For each class, boats that have not finished by the end of the Finishing Time Limit shall contact the Race Committee on VHF Ch. 77 to inform of their current location and shall then proceed to RSYC.

14. HEARING REQUEST

- 14.1. For each class, the protest time limit is 60 minutes after the Finishing Time Limit. Competitors are encouraged to submit their Hearing Request via online through <https://www.racingrulesofsailing.org/documents/4030/event?name=the-singapore-regatta-2022>.
- 14.2. Hearing Request forms are available on the event website. Hearing Requests shall be submitted online, within the appropriate time limit.

- 14.3. Notices will be posted no later than 30 minutes after the protest time limit to inform competitors of hearings in which they are parties or named as witnesses. Hearings will be held in the Jury room located at Republic of Singapore Yacht Club.

15. SCORING

- 15.1. The Scoring System, defined in NOR 13 will apply.
- 15.2. One race is required to be completed to constitute a series.

16. [DP][NP] SAFETY REGULATIONS

16.1. [SP] Check-Out and Check-In Procedures:





- 16.1.1. Before launching on each scheduled racing day, a competitor from each boat shall individually Check-Out, by personally signing on the forms provided at the Race Secretariat desk located at Changi Sailing Club.
- 16.1.2. Upon returning to shore after racing, a competitor from each boat shall individually Check- In, by personally signing on the forms provided at the Race Secretariat desk located at Changi Sailing Club and Republic of Singapore Yacht Club, respectively, as soon as possible but no later than the protest time limit.
- 16.2. A boat that retires from a race shall notify the Race Committee at the first reasonable opportunity before leaving the Race Area.
- 16.3. All boats shall carry a VHF radio capable of communication on VHF Ch. 77. On water, the Race Committee intends to monitor and communicate with competitors on VHF Ch. 77, boats shall standby on the channel to receive any announcements.
- 16.4. All competitors are strongly advised to bring mobile phones and relevant charts onboard.



17. [DP][NP] EQUIPMENT AND MEASUREMENT CHECKS

- 17.1. A boat or equipment may be inspected at any time for compliance with the class rules, notice of race and sailing instructions.

18. OFFICIAL VESSELS

- 18.1. Official vessels will be identified by flying the official event flag as follow;

VESSELS CALL SIGN	DESCRIPTION	REMARKS
"Race Committee Signal"		Orange flag
"Race Official"		SR insignia with white background
"Safety"		SR insignia with red background
"Media"		SR insignia with black background

"PRO"		SR insignia with grey background
"VIP"		SR insignia with grey background "no wording"

18.2. Actions by official vessels, drones or helicopters shall not be grounds for requesting redress by a boat. This changes RRS 60.1(b).

19. TRASH DISPOSAL

19.1. Trash may be placed aboard official vessels. The use of 'single-use' plastic bottles or containers on shore or afloat is strongly discouraged.

20. BERTHING

20.1. Mooring prior to the race will be made available at Changi Sailing Club (CSC) for all classes.

20.2. Berthing after the race will be in the Republic of Singapore Yacht Club (RSYC) for IRC, Multihull, PY & SB20 classes.

20.3. Competitors are required to contact "RSYC Marina" on VHF channel 77 and follow all instructions given in respect of berthing.

20.4. The RSYC will provide free berthing until Thursday 28 July 2022, 1200. Berthing beyond 1200 on Thursday 28 July 2022 is subject to availability and boats are liable for berthing fees.

21. PRIZES

21.1. Prizes will be given as defined in NOR 9.

22. [DP][NP] EVENT ADVERTISING

22.1. All competitors will be provided with an official Battle Flag backstay flag that shall be flown at least 1.5m above the deck while racing.

22.2. Event stickers will also be provided and shall be pasted at both sides of the boat located at the bow.

23. [DP][NP] MEDIA RIGHTS, CAMERAS AND ELECTRONIC EQUIPMENT

23.1. By participating in this event, competitors and their support persons automatically grant to the Organising Authority and any event sponsors, the right in perpetuity to make, use, and show, from time to time at their discretion, any motion pictures and live, taped, or filmed television and other reproductions of them during the period of the event without compensation.

23.2. Competitors and their support persons may be required for media interviews during the period of the event.

24. RISK STATEMENT

RRS 3 states: 'The responsibility for a boat's decision to participate in a race or to continue to race is hers alone.' By participating in this event each competitor agrees and acknowledges that sailing is a potentially dangerous activity with inherent risks. These risks include strong winds and rough seas, sudden changes in weather, failure of equipment, boat handling errors, poor seamanship by other boats, loss of balance on an unstable platform and fatigue resulting in increased risk of injury. **Inherent in the sport of sailing is the risk of permanent, catastrophic injury or death by drowning, trauma, hypothermia or other causes.**

25. INDEMNIFICATION

To the fullest extent permitted by law, each competitor agrees to indemnify and hold Singapore Sailing Federation, Changi Sailing Club, Republic of Singapore Yacht Club, owners, affiliates, officers, employees, agents, committee persons and race officials acting in the official capacities, harmless from any third party claim to the extent arising from a competitor's acts or omissions.

26. [NP] LIABILITY AND INSURANCE

- 26.1. The Singapore Sailing Federation, Changi Sailing Club and Republic of Singapore Yacht Club, owners, affiliates, officers, employees, agents, committee persons and race officials acting in the official capacities do not accept liability for loss of life or property damage, or personal injury or damage caused by or arising out of the event. Competitors take part in the event at their own risk.
- 26.2. The establishment of the Notice of Race and Sailing Instructions in no way limits or reduces the complete and unlimited responsibilities of a competitor being solely and entirely responsible for the management of a boat he is sailing.
- 26.3. All competitors shall maintain their boats in a safe and seaworthy condition.
- 26.4. A competitor shall be of good health and a competent sailor capable of racing in open water in all conditions including strong winds.
- 26.5. At-fault occurrences to other boats are the responsibility of the helmsman. Competitors are not covered by any liability insurance provided by the organising authority and should provide their own coverage for personal goods and liability protection. The organising authority recommends that competitors consult their own insurance carriers to assure they are covered at this event and regarding additional personal liability insurance coverage.
- 26.6. A competitor is recommended to have personal accident and health insurance that covers him while attending the event and while racing.
- 26.7. Each boat shall ensure that their boat is adequately insured against all third-party liability claims.
- 26.8. The Organising Authority is not responsible for verifying the status or validity of certificates.

27. FURTHER INFORMATION

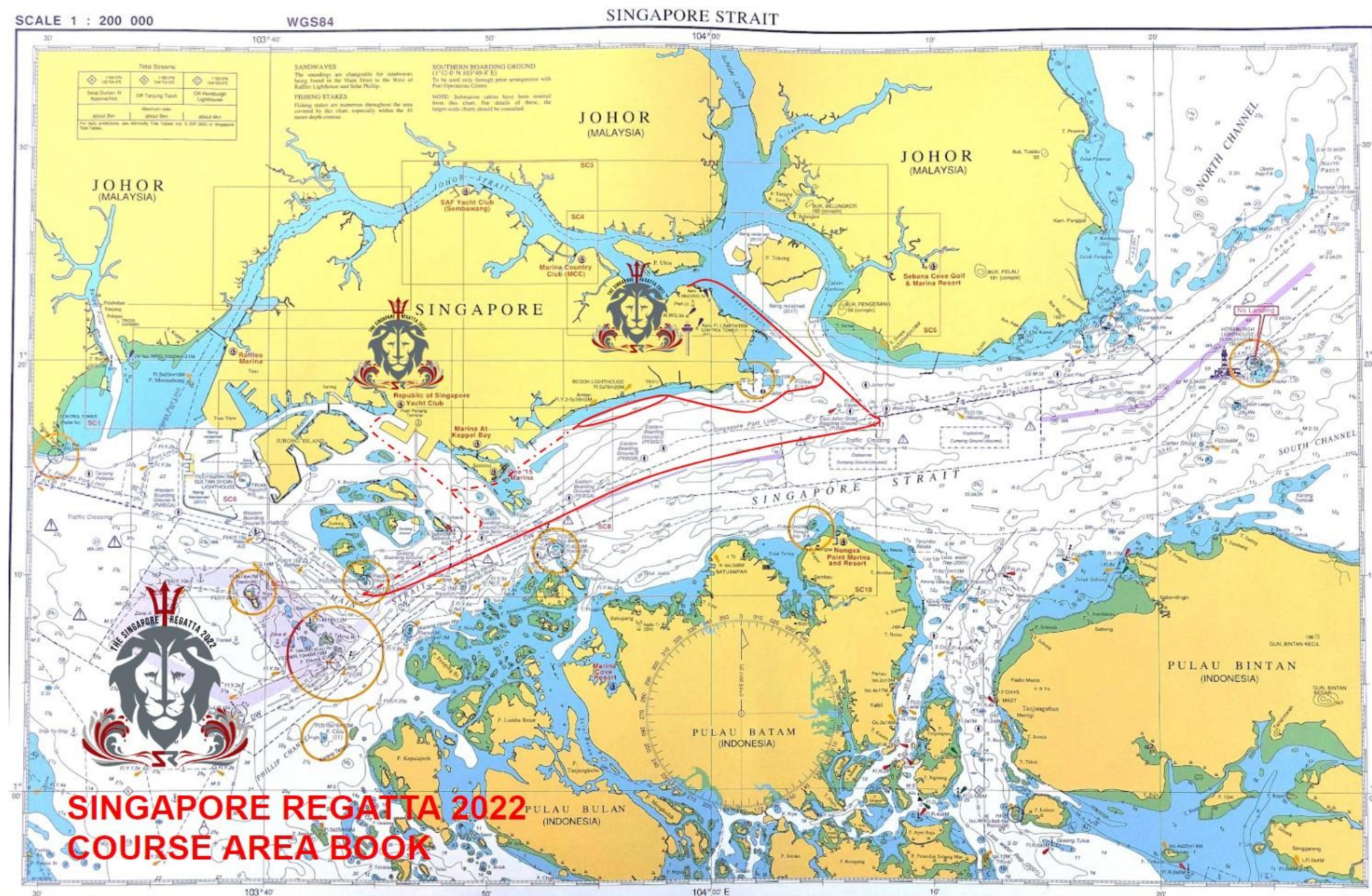
Please contact the Singapore Sailing Federation for any question regarding this event via the following means:

Tel: (+65) 6444 4555

Email: info@singaporesailing.org.sg

Website: www.sailing.org.sg

Addendum 1 – Course Area Book



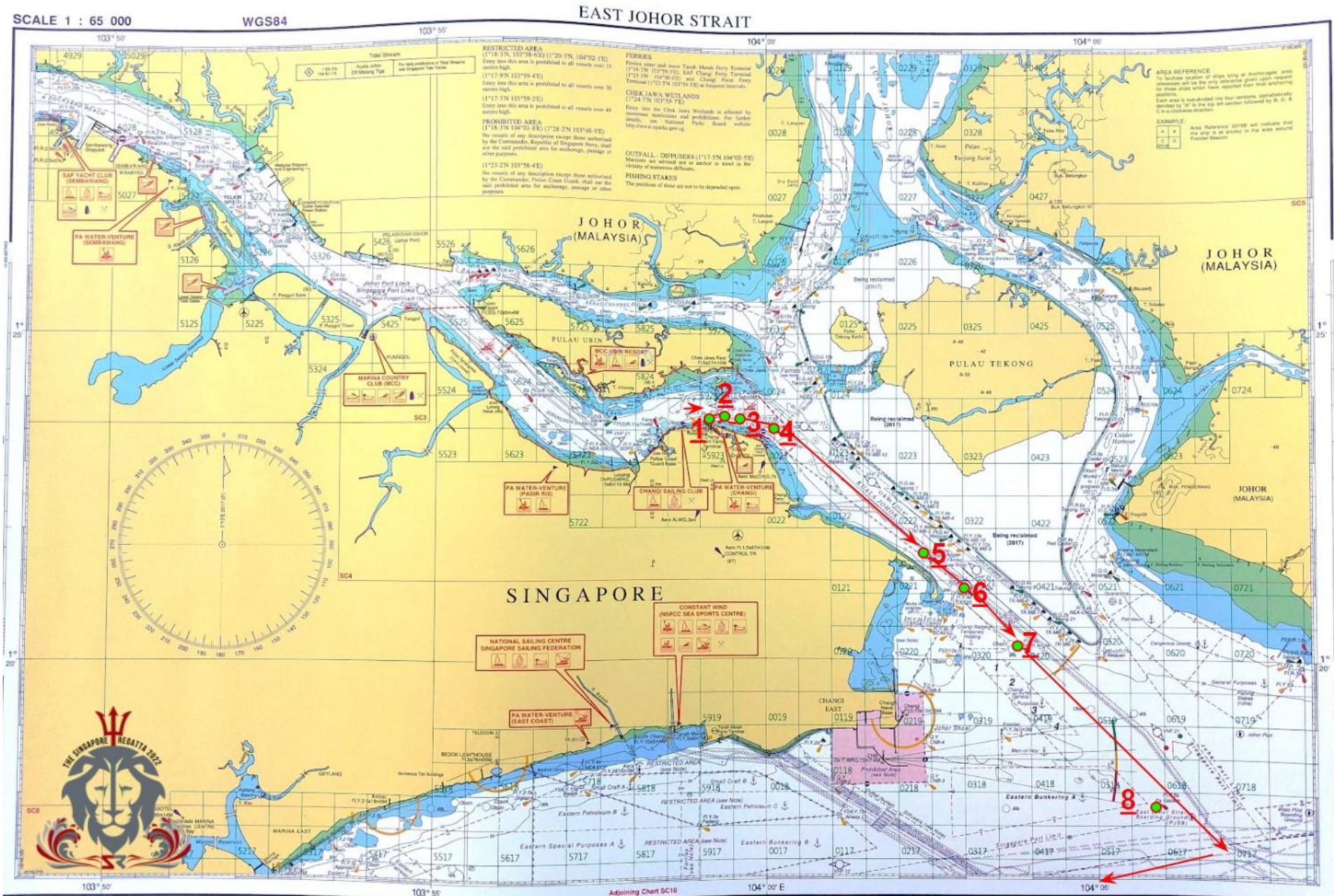


IRC Class and Multihull Class Passage Race Course

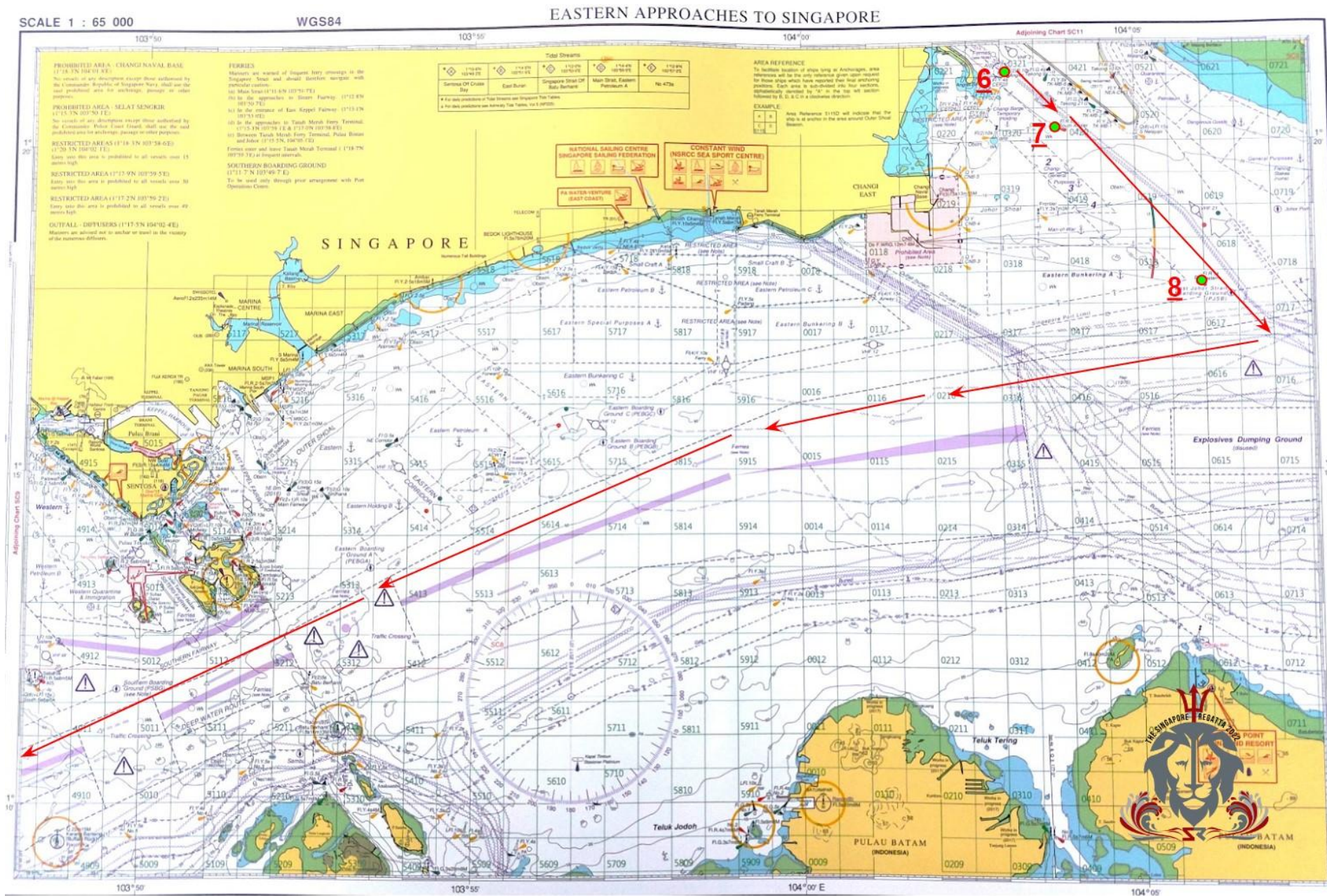
Addendum 1(a) – IRC Class & Multihull Class Passage Race course

Order of rounding or passing Marks	Lat / Long	Checkpoint	Description	Remarks
CSC Flag mast	1° 23.576'N / 103° 58.760'E	1	Start Line (Flag Mast)	Mark to stbd (Gate with CSC1)
CSC1	1° 23.732'N / 103° 58.762'E	1	Start Line - Yellow special purpose buoy	Start pin. Mark to port (Gate with CSC flag mast)
Changi buoy	1° 23.712'N / 103° 59.430'E	2	Red lateral buoy (cylindrical shape)	Mark to port
CAAS 1	1° 23.547'N / 103° 59.936'E	3	Yellow special purpose buoy (pillar shape)	Mark to stbd
Paku buoy	1° 23.541'N / 104° 0.143'E	4	Red lateral buoy (cylindrical shape)	Mark to port
North Angler	1° 21.582'N / 104° 2.398'E	5	Red lateral buoy (cylindrical shape)	Mark to port
Angler	1° 21.100'N / 104° 3.012'E	6	Red lateral buoy (pillar shape)	Mark to port
South Angler	1° 20.193'N / 104° 3.820'E	7	Red lateral buoy (cylindrical shape)	Mark to port
Eastern buoy	1° 17.866'N / 104° 5.902'E	8	Red lateral buoy (cylindrical shape)	Mark to stbd
Entrance to TSS. West-bound	After Eastern buoy	8-9	Leaving Singapore Port Limit into Strait Traffic Separation Scheme, TSS. To West-bound	NAVIGATION IN THE SINGAPORE STRAIT TRAFFIC SEPARATION SCHEME (TSS) (mpa.gov.sg)
Exiting TSS to Raffles Lighthouse	South of Raffles Lighthouse	8-9	Entering Singapore Port Limit to Raffles Lighthouse	
Race Official boat holding GPS position with staff displaying orange flag	1° 9.249'N / 103° 44.573'E	9	Southern of Satumu/Raffles Lighthouse	Mark to stbd
Senang	1° 10.409'N / 103° 44.999'E	10	Yellow special purpose buoy (cylindrical shape)	Finish pin. Mark to port (Gate with Finishing boat)
Finishing boat	1° 9.691'N / 103° 45.347'E	10	Finishing boat displaying blue flag	Mark to stbd (finishing gate between finishing boat and Senang buoy)

Addendum 1(a) – IRC Class & Multihull Class Passage Race course



Addendum 1(a) – IRC Class & Multihull Class Passage Race course

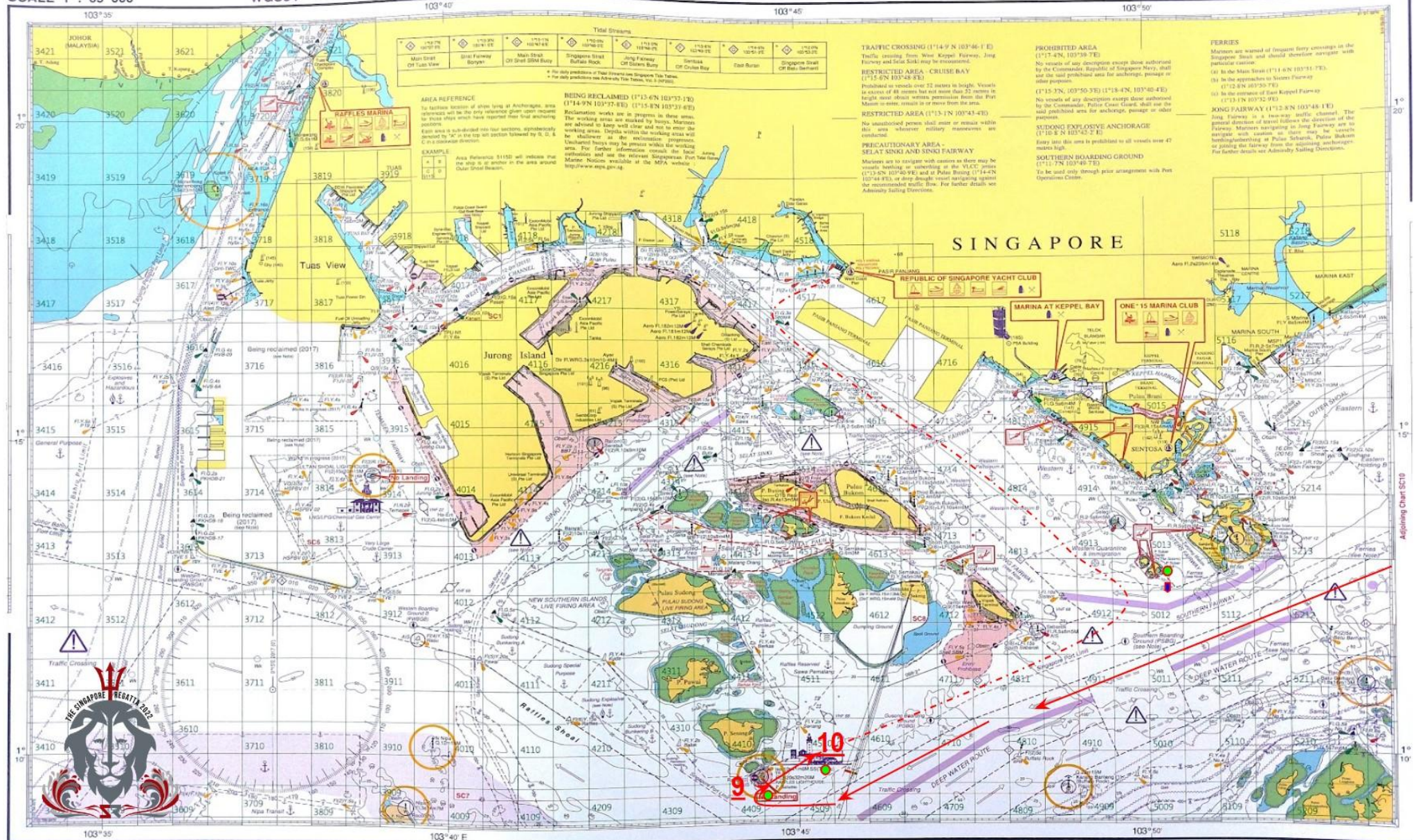


Addendum 1(a) – IRC Class & Multihull Class Passage Race course

SCALE 1 : 65 000

WGS84

WESTERN APPROACHES TO SINGAPORE





PY Classes & SB20

Passage Race Course

Addendum 1(b) – PY Class Passage Race course

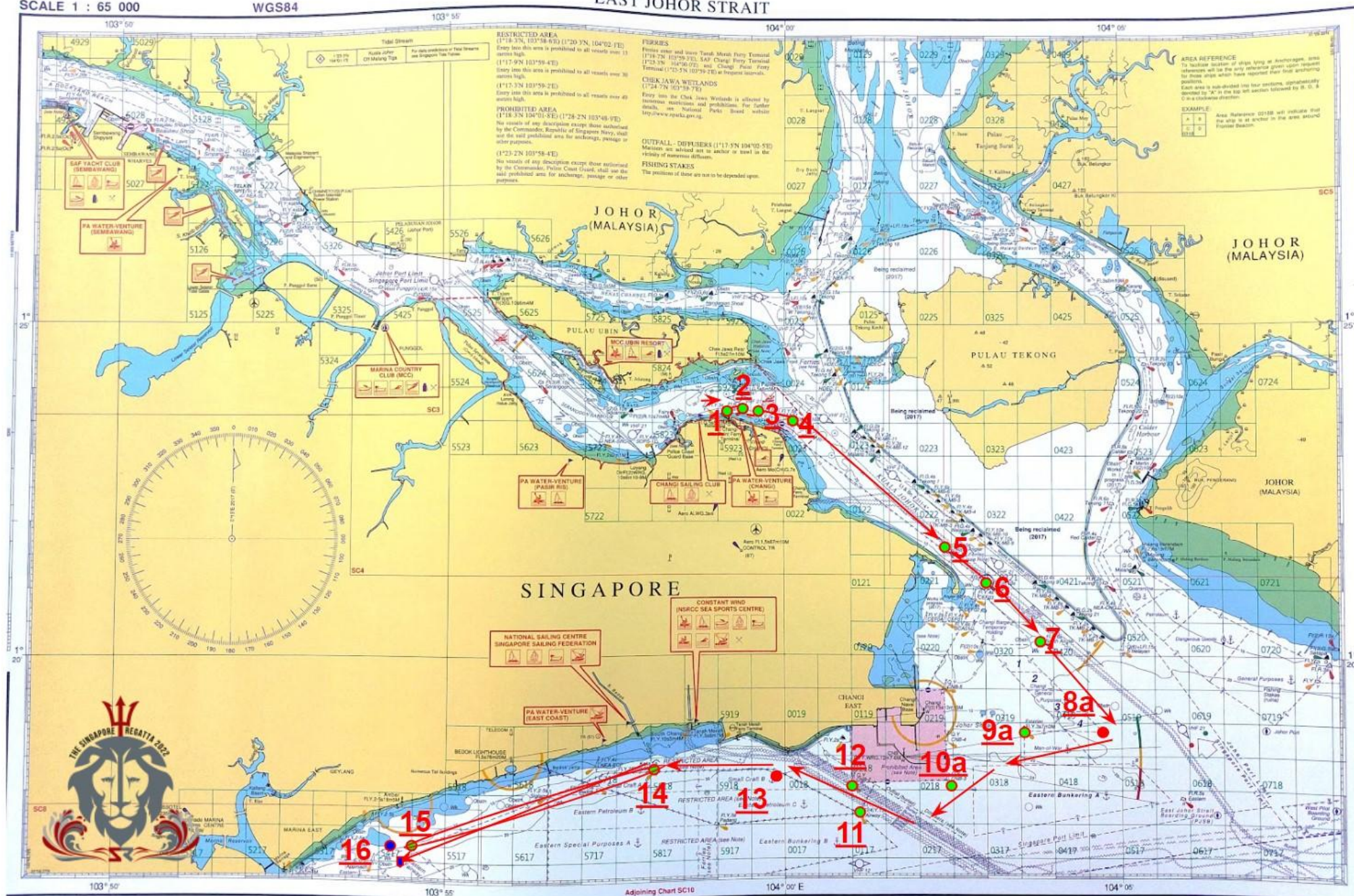
Order of rounding or passing	Lat / Long	Checkpoint	Description	Remarks
CSC Flag mast	1° 23.576'N / 103° 58.760'E	1	Start Line (Flag Mast)	Mark to stbd (Gate with CSC1)
CSC1	1° 23.732'N / 103° 58.762'E	1	Start Line - Yellow special purpose buoy	Start pin Mark to port (Gate with CSC flag mast)
Changi Buoy	1° 23.712'N / 103° 59.430'E	2	Red lateral buoy (cylindrical shape)	Mark to port
CAAS 1	1° 23.547'N / 103° 59.936'E	3	Yellow special purpose buoy (pillar shape)	Mark to stbd
Paku Buoy	1° 23.541'N / 104° 0.143'E	4	Red lateral buoy (cylindrical shape)	Mark to port
North Angler	1° 21.582'N / 104° 2.398'E	5	Red lateral buoy (cylindrical shape)	Mark to port
Angler	1° 21.100'N / 104° 3.012'E	6	Red lateral buoy (pillar shape)	Mark to port
South Angler	1° 20.193'N / 104° 3.820'E	7	Red lateral buoy (cylindrical shape)	Mark to port
Race Official boat holding GPS position with staff displaying orange flag	1° 18.883'N / 104° 4.717'E	8a	South-eastern of Changi General Purposes (ACGP) No.2	Mark to stbd
Frontier	1° 18.886'N / 104° 3.555'E	9a	Yellow special purpose beacon (Tower)	Mark to stbd
CNB3	1° 18.139'N / 104° 2.410'E	10a	Yellow special purpose beacon (pillar shape)	Mark to stbd
Airway	1° 17.646'N / 104° 01.096'E	11	Yellow special purpose buoy (cylindrical shape)	Mark to port
CNB2	1° 18.108'N / 104° 0.996'E	12	Yellow special purpose beacon (pillar shape)	Mark to stbd
Yellow tetrahedral mark	1° 18.319'N / 103° 59.871'E	13	North-eastern of Anchorage Small Craft B (ASCB)	Mark to port
Keta	1° 18.314'N / 103° 58.079'E	14	Yellow special purpose beacon (pillar shape)	Mark to port
Yellow tetrahedral mark	1° 17.479'N / 103° 54.350'E	15	Off Amber Beacon	Mark to port
Keta	1° 18.314'N / 103° 58.079'E	14	Yellow special purpose beacon (pillar shape)	Mark to port
Finishing boat	1° 17.415'N / 103° 54.266'E	16	Finishing boat displaying blue flag	Gate between finishing boat displaying blue flag and blue spherical mark

Addendum 1(b) – PY Class Passage Race course

SCALE 1 : 65 000

WGS84

EAST JOHOR STRAIT



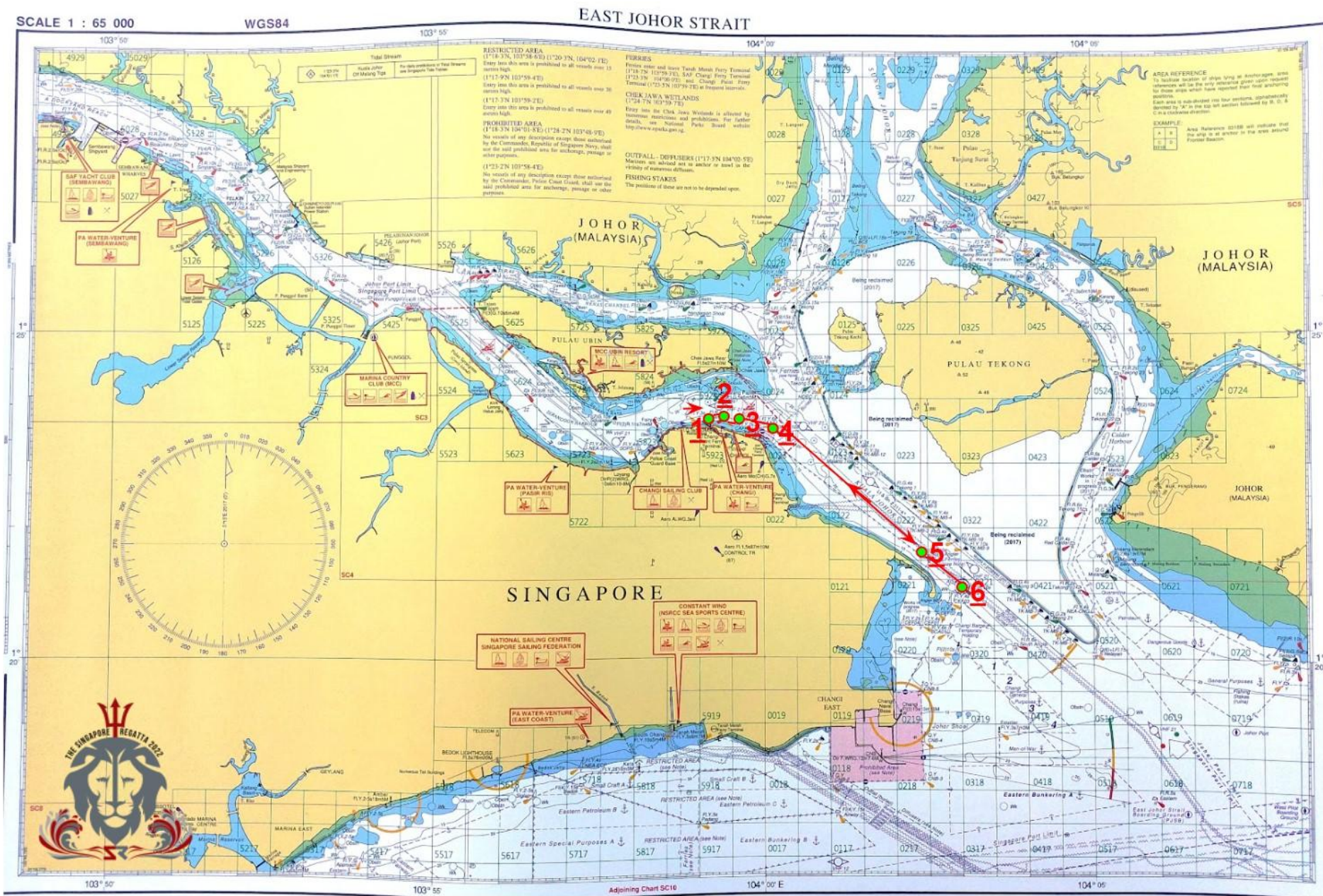


Cutter / Beach Catamaran
Passage Race Course

Addendum 1(c) – Cutter / Beach Catamaran Class Passage Race course

Order of rounding or passing	Lat / Long	Checkpoint	Description	Remarks
CSC Flag mast	1° 23.576'N / 103° 58.760'E	1	Start Line (Flag Mast)	Mark to stbd (Gate with CSC1)
CSC1	1° 23.732'N / 103° 58.762'E	1	Start Line - Yellow special purpose buoy	Start pin. Mark to port (Gate with CSC flag mast)
Changi Buoy	1° 23.712'N / 103° 59.430'E	2	Red lateral buoy (cylindrical shape)	Mark to port
CAAS 1	1° 23.547'N / 103° 59.936'E	3	Yellow special purpose buoy (pillar shape)	Mark to stbd
Paku Buoy	1° 23.541'N / 104° 0.143'E	4	Red lateral buoy (cylindrical shape)	Mark to port
North Angler	1° 21.582'N / 104° 2.398'E	5	Red lateral buoy (cylindrical shape)	Mark to port
Angler	1° 21.100'N / 104° 3.012'E	6	Red lateral buoy (pillar shape)	This is a rounding mark Leave mark to port
North Angler	1° 21.582'N / 104° 2.398'E	5	Red lateral buoy (cylindrical shape)	Mark to stbd
Paku Buoy	1° 23.541'N / 104° 0.143'E	4	Red lateral buoy (cylindrical shape)	Mark to stbd
CAAS 1	1° 23.547'N / 103° 59.936'E	3	Yellow special purpose buoy (pillar shape)	Mark to port
Changi Buoy	1° 23.712'N / 103° 59.430'E	2	Red lateral buoy (cylindrical shape)	Mark to stbd
CSC1	1° 23.732'N / 103° 58.762'E	1	Finish Line - Yellow special purpose buoy	Mark to stbd (Gate with CSC flag mast)
CSC Flag mast	1° 23.576'N / 103° 58.760'E	1	Finish Line (Flag Mast)	Mark to port (Gate with CSC1)

Addendum 1(c) – Cutter / Beach Catamaran Class Passage Race course



Addendum 2 - IRC Class & Multihull Class Passage Race course
Trajectory points and new location of the Finishing Line (If applicable)

Tembakul beacon (red lateral tower, east of Sakijang)	1° 13.341'N / 103° 51.755'E
Seringat beacon (red lateral pile, east of Seringat)	1° 13.941'N / 103° 51.495'E
Pulau Sakijang Bendera (St John Island) Tower	1° 12.834'N / 103° 51.093'E
Finishing boat displaying Blue Flag	1° 12.704'N / 103° 50.880'E

