

Appendix C – Coach/Support/Spectator Boat Notes

1) Radio Channels

PRO Ch. 69, Safety Leader Ch 71

Spare Channels 68, 74, 72, 8 & 11

Emergency Services - Channel 16 Lifeboat Operations - Channel 67

2) Coach/Support Boats Sailing Instructions – also refer to SI 24

Except when participating in rescue operations, coaches and other support personnel (coach/support/spectator boats) shall stay more than 100 meters from any point where a boat might sail during normal racing and completely outside the area bounded by marks 1, 2, 3, 4 and 5 from the time of the preparatory signal for the first fleet to start until all boats have finished or the race committee signals a postponement or abandonment of **all fleets**.

When boats are finishing, coach/support boats shall stay more than 100 meters outside and to windward of the starboard end of the finish line until all boats in all fleets have finished.

3) General Information

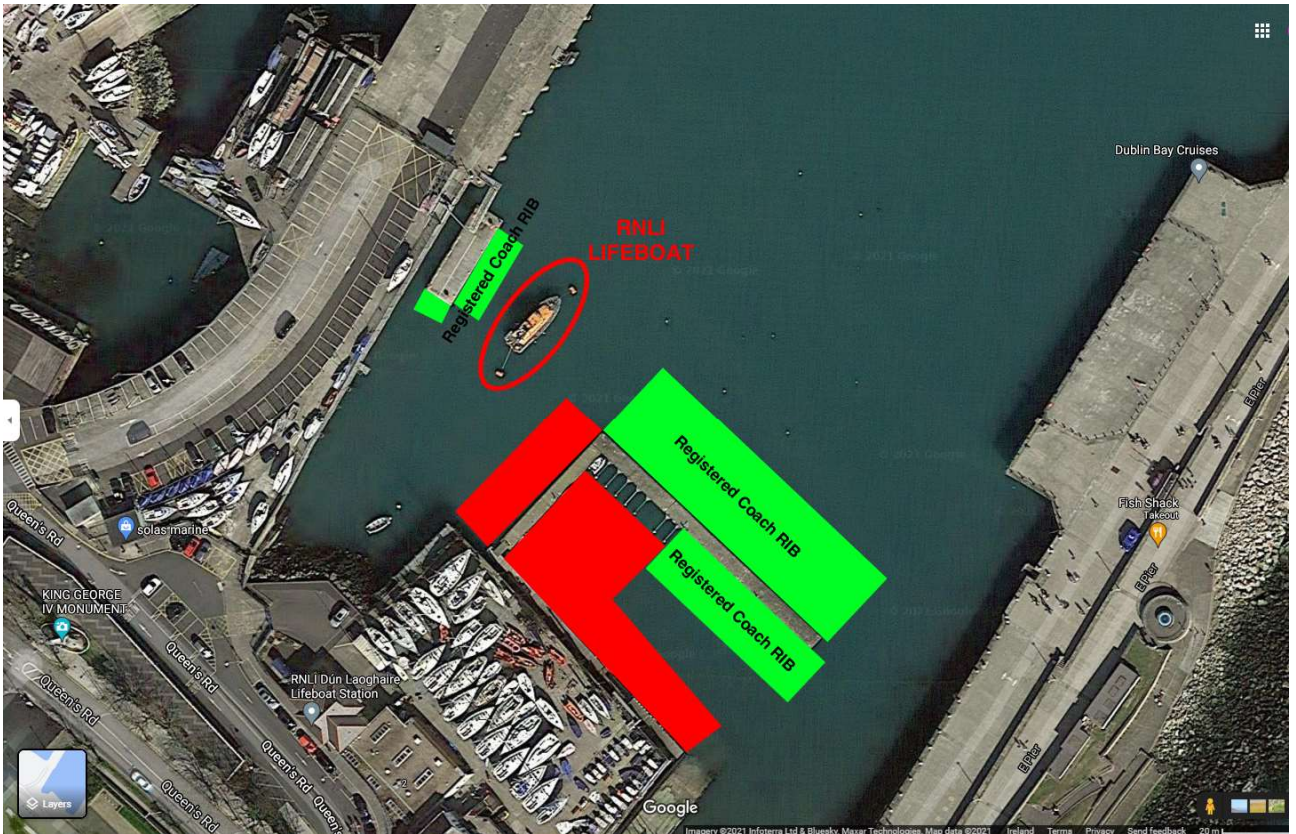
2.5 hrs. before the first warning signal of the day, there will be briefing for Coaches/Team Leaders at the Race office in the NYC

The berthing area in front of the RSGYC is reserved for Race Committee/Jury Boats only. Please use **your assigned berthing area in GREEN at the NYC** (see picture below)

PLEASE MAKE SURE TO NEVER IMPEDE THE ACCESS AND OPERATION OF THE DUN LAOGHAIRE RNLI LIFEBOAT

The areas in RED are to be kept clear at all times

ONLY OFFICIALLY REGISTERED COACHES ARE TO BE BERTHED AT THE NATIONAL YACHT CLUB, NOT SPECTATOR BOATS!



4) Safety

Please comply with local legislation including the requirements to wear lifejackets and be aware of the 8 kts speed limit in Dun Laoghaire Harbour. Please follow Safety Boat instructions.

When the coach/support boat engine is running coach/support boat drivers shall be connected to a device that will stop the engine if the boat driver falls out the boat or is otherwise not in control of the boat.

5) In the Event of a Serious Incident

- 5.1 Take instructions from Safety Leader or Zone Safety Boat.
- 5.2 Place priority on sailors, not boats.
- 5.3 Report rescued competitor sail numbers to shore/committee boat via radio.
- 5.4 If a boat is abandoned, ensure it is marked with a hazard tape tied through the bow eye to signal that the sailor is safe.

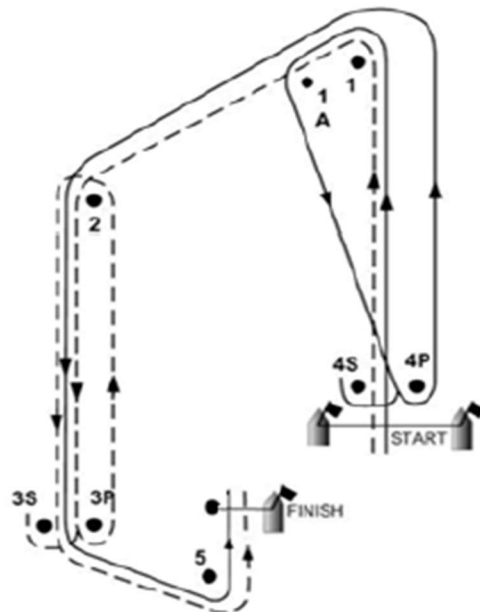
2021 ILCA 4.7 Youth World Championships - Safety Policy & SOPs

Appendix D - Course Area (approximate) and No-go zones (Red and White squares).



Course Configuration

Outer:1, 2, 3S/3P (gate), 2, 3S/3P (gate), 5, FINISH
 Inner:1, 1A, 4S/4P (gate), 1, 2, 3S/3P (gate), 5, FINISH



2021 ILCA 4.7 Youth World Championships - Safety Policy & SOPs

Appendix F – On the water personnel Daily Briefing Schedule

Sunday 8th August

CLUB	ACTIVITY	TIME	LOCATION
RSGYC	On the Water Personnel (All) - Event Briefing	1100 - 1130	Flagpole

Sunday 8th August

RSGYC	Mark Layers briefing	1130-1230	RSGYC
RSGYC	All other personnel collect radios & equipment, report to their committee boats, prepare boats	1130	
RSGYC	Safety Boat personnel briefing	1145-1230	RSGYC Flagpole
	Go afloat for practice race	1230	
	Practice Race – Warning signal	1400	
	De-brief ashore, refuel	After Sailing	
C.Pier	Opening Ceremony	1800	

Monday 8th – Saturday 14th August - Note all times based on warning signal of 1200

RSGYC	All personnel report, collect radios & equipment, prepare boats	0930	
	Coaches/Team Leaders Meeting	0930	NYC Race Office
<u>NYC</u>	Organising Committee morning meeting	0900	Dining Room
	Safety Boat Morning Briefing	1000	RSGYC Flagpole
	Mark Layers Morning Briefing	1000	RSGYC Flagpole
	Go afloat - All	1030	
	1 st Warning signal	1200	
	De-brief ashore, refuel	After Sailing	
NYC & RSGYC	Après Sail TBA		Club Balconies
	Saturday 14 th – Prize giving	1800	