

***The UKLA Open & National Championships
18th to 22nd July 2022
Sailing Instructions***

Hosted by Hayling Island Sailing Club (HISC)

The Organising Authority (OA) is HISC in conjunction with the UKLA.

The notation '[NP]' in a rule means that a boat may not protest another boat for breaking that rule. This changes RRS 60.1(a)

1. RULES

- 1.1. The events are governed by the rules as defined by The Racing Rules of Sailing.
- 1.2. Documents, pertaining to this event are available at [event website](#)
- 1.3. RRS Appendix T, Arbitration, will apply.
- 1.4. RRS Appendix P, Special Procedures for RRS 42, will apply.
- 1.5. Boats shall comply with the Class Rules as posted on the ILCA website. [DP]
- 1.6. ILCA class rule 7 (a) is restricted as follows "only one person shall be on board whilst racing. The person shall be named on the entry form" No substitution of helm is permitted.
- 1.7. Rule 40.1 shall apply at all times on the water.
- 1.8. Protocols relating to COVID-19 may be published at any time and will state if they have a status of a rule. [DP]
- 1.9. Where there is a conflict between the Notice of Race and the Sailing Instructions, the Sailing Instructions shall prevail. (This changes RRS63.7).
- 1.10. The following Rules have been changed Appendix A 5.1, A5.2, A10, RRS 33, 35, 61.1b, 62.1a, 62.2, 63.1. 63.7

2. CHANGES TO SAILING INSTRUCTIONS

- 2.1. Any change to the sailing instructions will be posted not less than 30 minutes before flag D is displayed., except that changes to the schedule of races will be posted before 19.00 on the day before it will take effect.

3. COMMUNICATIONS WITH COMPETITOR

- 3.1. Notices to competitors will be posted on the Official Notice Board, which is Located here [Official Notice Board](#)
- 3.2. The race office is located at the reception area at Hayling Island
- 3.3. [DP] While racing from the first warning signal until the end of the last race of the day, except in an emergency, a boat shall not make voice or data transmissions and shall not receive voice or data communication that is not available to all boats.
- 3.4. Competitor WhatsApp groups are split by fleets: [ILCA 4](#), [ILCA 6](#), [ILCA 7](#). Please join the correct group.
- 3.5. The competitor briefing will be at 10:00 on Monday and at 9:45 each morning thereafter in the Main bar.

4. CODE OF CONDUCT

- 4.1. Competitors and support persons shall comply with any reasonable request from an event official. Failure to comply may be misconduct. Reasonable actions by event officials to implement COVID-19 guidance protocols or legislation, even if they later prove to be unnecessary, are not improper actions or omissions. [DP]
- 4.2. Competitors and support persons may place advertising provided by the organising authority with care, seamanship, in accordance with any instructions for its use and without interfering with its functionality.



5 SIGNALS MADE ASHORE

- 5.1 Signals made ashore will be displayed on the flagpoles on top of race box
- 5.2 When flag AP is displayed ashore, '1 minute' is replaced with 'not less than 60 minutes'
- 5.3 Flag D with one sound means 'The warning signal will be made not less than 60 minutes' after flag D is displayed. Boats shall not leave the slipway until this signal is made. [DP].

6 FORMAT OF RACING

- 6.1 For ILCA 7 the regatta will consist of a single series
- 6.2 The ILCA 6 and ILCA 4 fleet may be divided into two fleets and will sail a qualifying series of up to eight races followed by a final series of two races in accordance with the ILCA Qualifying and Final Series Formats appended to these sailing instructions. Appendix B

7 SCHEDULE

7.1 Registration/check in

Date	Open	Close	Location
17/07/22	18:00		On line
18/07/22		10:00	On line
Sailors needing help to register, can register in person during following times:			
17/07/22	18:00	20:00	Main bar area
18/07/22	08:00	10:00	Main bar area

7.2 Schedule of races. The anticipated scheduled time of the warning signal for the first race each day is;

Date	Time of first warning signal (not before)	Races per day scheduled
18/7/22	12:25	2
19/7/22	TBA	2
20/7/22	TBA	2
21/7/22	TBA	2
22/7/22	TBA	2

- 7.3 The time of the first warning signal for the following days racing (TBA) will be posted no later than 20:00 on the Official Notice Board, together with the scheduled races, name of the committee vessel and anticipated location
- 7.4 To alert boats that a race or sequence of races will begin soon, the orange starting line flag will be displayed with one sound at least two minutes before the first warning signal is made.
- 7.5 Each day succeeding races will be started as soon as practicable after the finish of the previous race
- 7.6 On the last scheduled day of racing, no warning signal will be made after 15:00.

8 CLASS FLAGS

The class flags for each class will be as follows:

Fleets	Class Flag	Intended Start sequence
ILCA 7		
ILCA 6		
ILCA 4		
ILCA 4 / (No band) Final series Gold		First
ILCA 4 / (Red band) Final series silver		Second
ILCA 6 / (no band) Final series Gold		First
ILCA 6 / (Red band) Final series silver		Second

9 RACING AREAS

The racing area are shown in Appendix C

10 COURSES

- 10.1 The diagrams in SI Appendix A show the course options to be sailed with the order in which the marks are to be passed and the side on which each mark is to be left.
- 10.2 The course and number of laps to be sailed will be displayed on the Committee Boat.
- 10.3 The approximate bearing of mark 1 may be displayed on the Committee Boat.



OVINGTON
built to win

Vaikobi
OCEAN PERFORMANCE

HARKEN



southeast
sailboats

NOBLE
MARINE INSURANCE



10.4 If a gate is replaced by a single mark, it is to be left to port.

11 MARKS

11.1 There will be Two course areas and Two Committee vessels

CV Name	Call Sign	Description
CV1	Lady G	Blue Hull white top MB
CV2	Wet Wheels	All white catamaran

11.2 Marks for CV1 courses are Black. Marks for CV2 courses are Orange

11.3 The starting mark will be either an official boat displaying an orange flag or the course side of an orange buoy at the Port end.

11.4 The finishing mark will be either an official boat displaying a blue flag or the course side of a blue buoy.

12 OBSTRUCTIONS

12.1 N/A

13 THE START

13.1 Races will be started by using RRS 26 with the warning signal made five minutes before the starting signal.

13.2 The Preparatory Signal will be either RRS 30.3 (U Flag Rule), or RRS 30.4 (Black Flag Rule).

13.3 The starting line will be between a staff on the race committee signal vessel displaying an orange flag and the starting mark.

13.4 A boat that does not start within four minutes after her starting signal will be scored Did Not Start without a hearing. This changes RRS A5.1 and A5.2.

13.5 Boats whose warning signal has not being made shall remain a minimum of 100 metres from the start line during the start sequence of the previous fleets [DP]

14 CHANGE OF THE NEXT LEG OF THE COURSE

14.1 To change the next leg of the course, the race committee will move the original mark.

14.2 Minor mark moves, up to approximately 100m, may be made without signalling the change. This changes RRS 33.

15 THE FINISH

15.1 The finishing line will be between a mast displaying blue flag on the race committee signal vessel and the finishing mark.

15.2 The race committee may score boats based on their relative positions at a mark of the course or on a leg of the course as follows:

15.2.1 When an official boat displays flag W with two sounds, boats still racing may be scored as their observed position on the race course.

15.2.2 When a boat is scored in accordance with this instruction, she shall be given a score for a place after all boats that have sailed the course and finished. This changes RRS A4 and A5.

16 PENALTY SYSTEM

16.1 RRS Appendix P will apply with the following changes. The penalty under RRS P2.2 is changed so that it will apply to any penalty after the first one. RRS P2.3 will not apply.

16.2 To encourage boats to take a penalty afloat, jury members may blow a whistle when they see what they believe to be a breach of a rule.



17 TIME LIMITS

17.1 The time limits and target times are as follows:

Time limit	Mark 1 time limit	Target time	Finishing Window
70 minutes	20 minutes	50 minutes	15 minutes

17.2 If no boat has passed Mark 1 within the Mark 1 time limit the race will be abandoned. Failure to meet the target time will not be grounds for redress. This changes RRS 62.1(a).

18 HEARING REQUESTS

- 18.1 In addition to RRS 61.1(a) a boat intending to protest should notify the finish boat immediately upon finishing the race or retiring and await acknowledgement.
- 18.2 Protests/Redress shall be lodged online via the online Jury system located at Racingrulesofsailing.org Protests and requests for redress or reopening shall be delivered there within the appropriate time limit using the online form available [Protest form](#). Should the system be out then paper based forms will be available at the Race Office
- 18.3 The protest time limit is 75 minutes after the last boat has finished the last race of the day or after flag AP over A is displayed ashore.
- 18.4 The hearings may be heard via video call (Zoom) unless otherwise scheduled by the protest committee. All links will be sent via email.
- 18.5 A Hearing Schedule will be posted on the Official Notice Board as soon as possible after a protest has been lodged, but not later than 30 minutes after the end of Protest Time to inform competitors of hearings in which they are parties or named as witnesses. Protests will be heard in the order specified on the Hearing Schedule. Parties and witnesses are required to be available via video at the time stated on the Hearing Schedule. It is the responsibility of each party to ensure their witnesses are available at the time of the video call. Hearings will be held online using video links, further instructions are available on the Official Notice Board.
- 18.6 Notices of protests by the race committee or protest committee will be posted to inform boats under RRS 61.1(b) [hearings](#).
- 18.7 A list of boats that have been penalised for breaking RRS 42 will be posted [On the water penalties](#)
- 18.8 On the last scheduled day of racing, a request for redress based on a PC decision shall be delivered no later than 20 minutes after the decision was posted. This changes RRS 62.2.

19 SCORING

- 19.1 For ILCA 7 class, scoring is as per NOR 15
- 19.2 A competitor may submit a request to review a boat's score online at [Scoring Enquiries](#)
- 19.3 When a qualifying/final series is sailed
- 19.3.1 The qualifying series races and the final series races will count for total points in the championship.
- 19.3.2 A qualifying series race will not count until all qualifying series fleets have completed that race.
- 19.3.3 The worst qualifying series race score will be excluded when calculating the division into final series fleets.
- 19.3.4 If only one final series race is completed it will not be excluded.
- 19.3.5 For the purposes of RRS A5.2 "Scoring" the number of boats entered in a qualifying/final series race will be the number of boats assigned to the largest qualifying fleet

20 SAFETY REGULATIONS [DP]

- 20.1 A boat that retires from a race shall notify the committee boat as soon as possible. A declaration form is available online which must be completed by competitors when ashore through this link [Penalty Reports](#)
- 20.2 A safety tally system will be in operation.
- 20.3 The tally points will be on the main slipway or in the boat park by the Lifeboat Station.



OVINGTON
built to win

Vaikobi
OCEAN PERFORMANCE

HARKEN



southeast
sailboats

NOBLE
MARINE INSURANCE



- 20.3.1 A Competitor's tally number will be allocated and emailed to all competitors ahead of the event.
- 20.3.2 Competitors shall individually check-out before racing by personally going to the tally control point and taking a tally with their number on it. No boat may launch before collecting their tally.
- 20.3.3 Competitors shall individually check-in immediately on returning to shore by personally going to the tally control point and return their tallies to the tally board.
- 20.3.4 Competitors may be penalised for not tallying in or out. The penalty for failing to check-out or check-in as instructed above will be three points non excludable added to the boat's series score for each offence. This changes RRS 63.1 and A5.
- 20.4 RRS 40.1 always applies on the water.
- 20.5 Boats wishing to sail ashore before the end of the day's racing should advise shall not do so unless authorised by an official boat. The official boat will instruct boats in the procedure for returning ashore.
- 20.6 Boats shall follow the instructions of the official boats. Infractions will be reported to the race committee, which may protest the boat. [DP]

21 REPLACEMENT OF EQUIPMENT

- 21.1 Substitution of damaged or lost equipment will not be allowed unless authorised by the race committee. Requests for substitution of equipment shall be made to the committee at the first reasonable opportunity. A Competitor may submit a request online at [Equipment Substitution](#)

22 EQUIPMENT AND MEASUREMENT CHECKS.

A boat or equipment may be inspected at any time for compliance with the class rules and sailing instructions. On the water or ashore, a boat can be instructed by an equipment inspector to proceed immediately to a designated area for inspection. A boat shall comply with any reasonable request made by an Equipment Inspector. [DP].

23 SUPPLIED BOATS NA

24 OFFICIAL VESSELS

- 24.1 See SI 11.1, plus Mark Laying RIBs, Jury RIBs, Finish Boats.
- 24.2 On water Jury boats will display a flag "Jury"

25 SUPPORT BOATS [DP]

- 25.2 Upon arrival Support Boats must report to reception and pay appropriate charges. They must not launch before this requirement has been met. All support boat crews shall attend all safety boat briefings.
- 25.3 To ensure fairness to all competitors, support boats will be encouraged to carry drinks, snacks and spares, properly for competitors who do not have their own support boat.
- 25.4 When the circumstances require it, the Course Safety Leader (CSL) or Race Committee may call upon support boats to assist with safety duties by displaying flag V on the race committee boat and requesting assistance on the designated VHF channel. The VHF channel used on the racing area will be provided at the safety boat briefings.
- 25.5 Kill cords shall be worn at all times whilst engines are running. Failure to do so may result in the support boat and her crew being banned from the racing area for the remainder of the event.
- 25.6 Except when participating in rescue operations all support boats shall stay at least 100m away from any boat racing and will stay outside the race area from the time of the warning signal for the first start until all racing boats have finished, or the race committee signals a postponement or abandonment of all fleets.
- 25.7 For the purposes of identifying the race area, this shall be determined as any part of the course bound by racing marks, start line and extensions and finish lines and relevant lay lines between race marks extending to 100m from all these points.



OVINGTON
built to win

Vaikobi
OCEAN PERFORMANCE

HARKEN®



southeast
sailboats

NOBLE
MARINE INSURANCE



- 25.8 Each support boat shall be insured with to a minimum valid third-party liability insurance of £3m per event.
25.9 In order to prevent fuel spillage, refuelling of boats/tanks is not permitted on the pontoons at HISC. Boats may refuel at the Sparks Marina fuel pontoon or removable tanks may be taken offsite to be refuelled at a service station.

26 TRASH DISPOSAL

- 26.1 Rubbish is not to be thrown in the sea, sailors are to bring any rubbish ashore and place it in an appropriate bin. Due to COVID-19 rubbish may not be placed aboard support and race committee boats.

27 BERTHING

- 27.1 Boats shall be kept in their assigned places whilst in the boat park.

28 HAUL OUT RESTRICTIONS

NA

29 DIVING EQUIPMENT AND PLASTIC POOLS

NA

30 PRIZES

- 30.1 List of awarded prizes will be available on [Official Notice Board](#) before race 1.
30.2 Details on the official prizegiving will be advised via the WhatsApp link.
30.3 Prizes will be presented after the event

31 RISK STATEMENT

See NOR 22

32 INSURANCE

See NOR 23.



OVINGTON
built to win

Vaikobi
OCEAN PERFORMANCE

HARKEN®



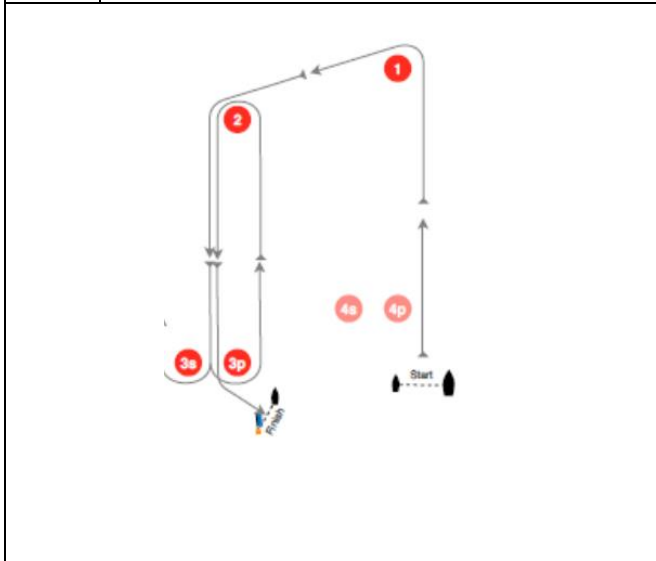
southeast
sailboats

NOBLE
MARINE INSURANCE

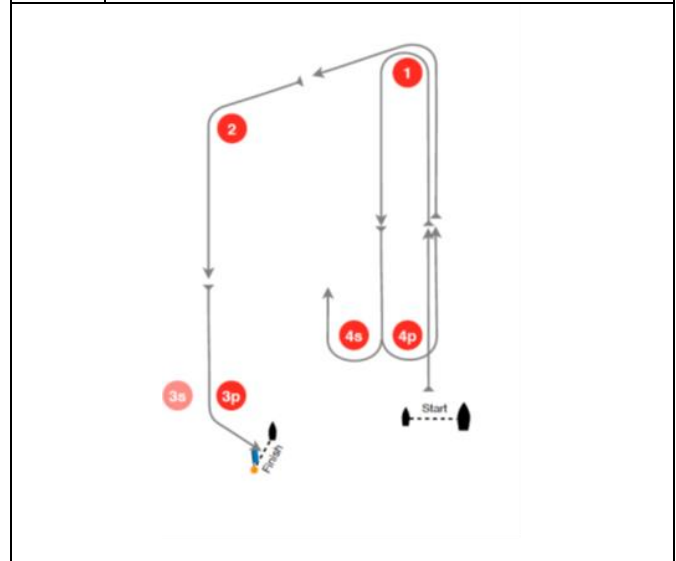


APPENDIX A - THE COURSE DIAGRAMS

O	Outer Trapezoid with finish pin to leeward of finish boat
Signal	Mark Rounding Order
O2	Start-1p-2p-3s/3p-2p-3p-Fin
O3	Start-1p-2p-3s/3p-2p-3s/3p-2p-3p-Fin
O4	Start-1p-2p-3s/3p-2p-3s/3p-2p-3s/3p -2p-3p-Fin



I	Inner Trapezoid with finish pin to leeward of finish boat
Signal	Mark Rounding Order
I2	Start-1p-4s/4p-1p-2p-3p-Fin
I3	Start-1p-4s/4p-1p-4s/4p-1p-2p-3p-Fin
I4	Start-1p-4s/4p-1p-4s/4p-1p-4s/4p-1p-2p-3p-Fin



OVINGTON
built to win

Vaikobi
OCEAN PERFORMANCE

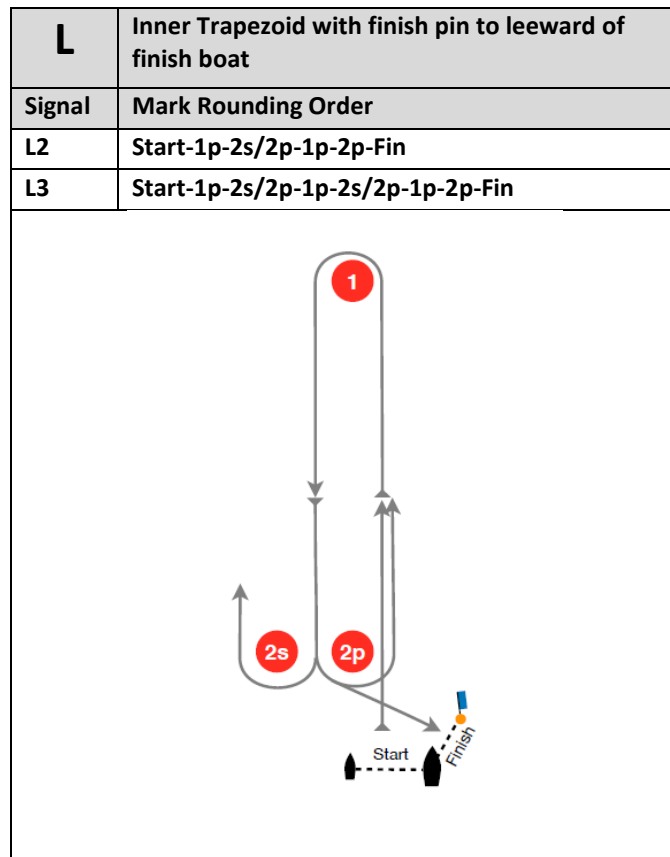
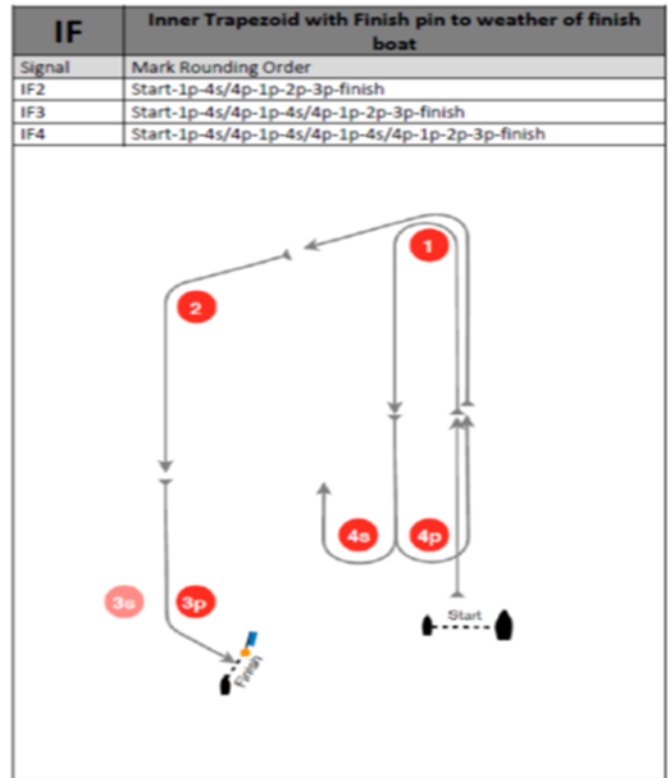
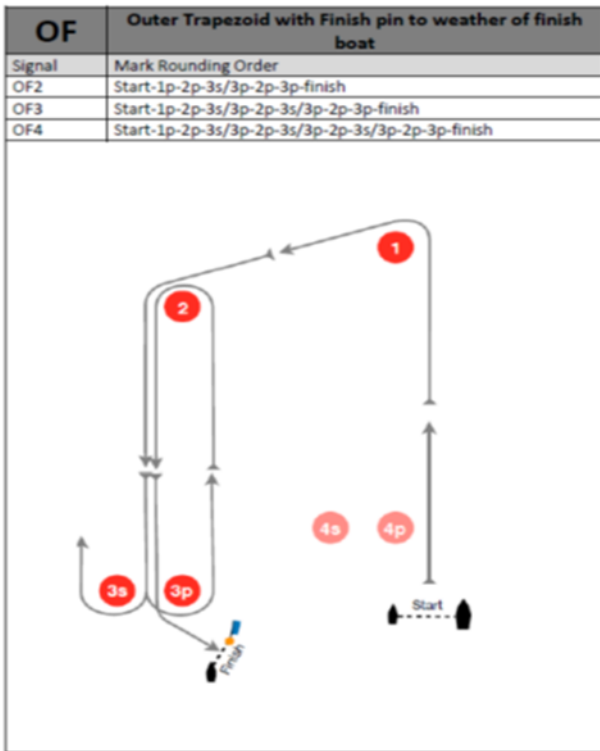
HARKEN



southeast
sailboats

NOBLE
MARINE INSURANCE





Appendix B

International Laser Class Association Qualifying and Final Series Formats

1. Introduction

1.1 This addendum applies when boats are divided into fleets to sail a qualifying series and a final series.

2. Qualifying Series

- 2.1 For the qualifying series boats that have completed registration will be assigned to fleets of, as near as possible, equal size and ability.
- 2.2 Initial assignments will be made by a seeding committee appointed by the organizing authority and will be posted by 0900 on the last day of registration.
- 2.4 In the qualifying series boats will be reassigned to fleets after each day of racing, except if on the first day only one race is completed. If all fleets have completed the same number of races, boats will be reassigned on the basis of their ranks in the series. If all fleets have not completed the same number of races the series scores for reassignment will be calculated for those races, numbered in order of completion, completed by all fleets.
- 2.5 Reassignments will be made as follows: Two fleet format

Rank in series	Fleet assignment
1	1
2	2
3	2
4	1
5	1
6	2
7	2
8	1
9	1
And so on	And so on

- 2.6 Reassignments will be based on the ranking available at 2000 that day regardless of protests or requests for redress not yet decided.
- 2.7 A qualifying series race will not count until all qualifying series fleets have completed that race.
- 2.8 The fleets will be reflighted each evening, based upon the completed races. The qualifying series will end after the final race is finished on 21st July irrespective of the number of races completed.
- 2.9 If at the end of the qualifying series some qualifying series fleets have more race scores than others, any extra races will be abandoned so that all boats in the qualifying series have the same number of race scores.

3. Final Series

- 3.1 Boats will be assigned to final series fleets on the basis of their ranks in the qualifying series.
- 3.2 There will be the same number of fleets in the final series as there were in the qualifying series.
- 3.3 The final series fleets will be, as nearly as possible, of equal size but so that the Silver fleet is not larger than the Gold fleet. Boats with the best qualifying series ranks will race all final series races in the Gold fleet; boats with the next best qualifying series ranks will race in the Silver fleet.
- 3.4 Any recalculation of qualifying series ranking after boats have been assigned to final series fleets will not affect the assignments except that a redress decision may promote a boat to a higher fleet.



OVINGTON
built to win

Vaikobi
OCEAN PERFORMANCE

HARKEN



southeast
sailboats

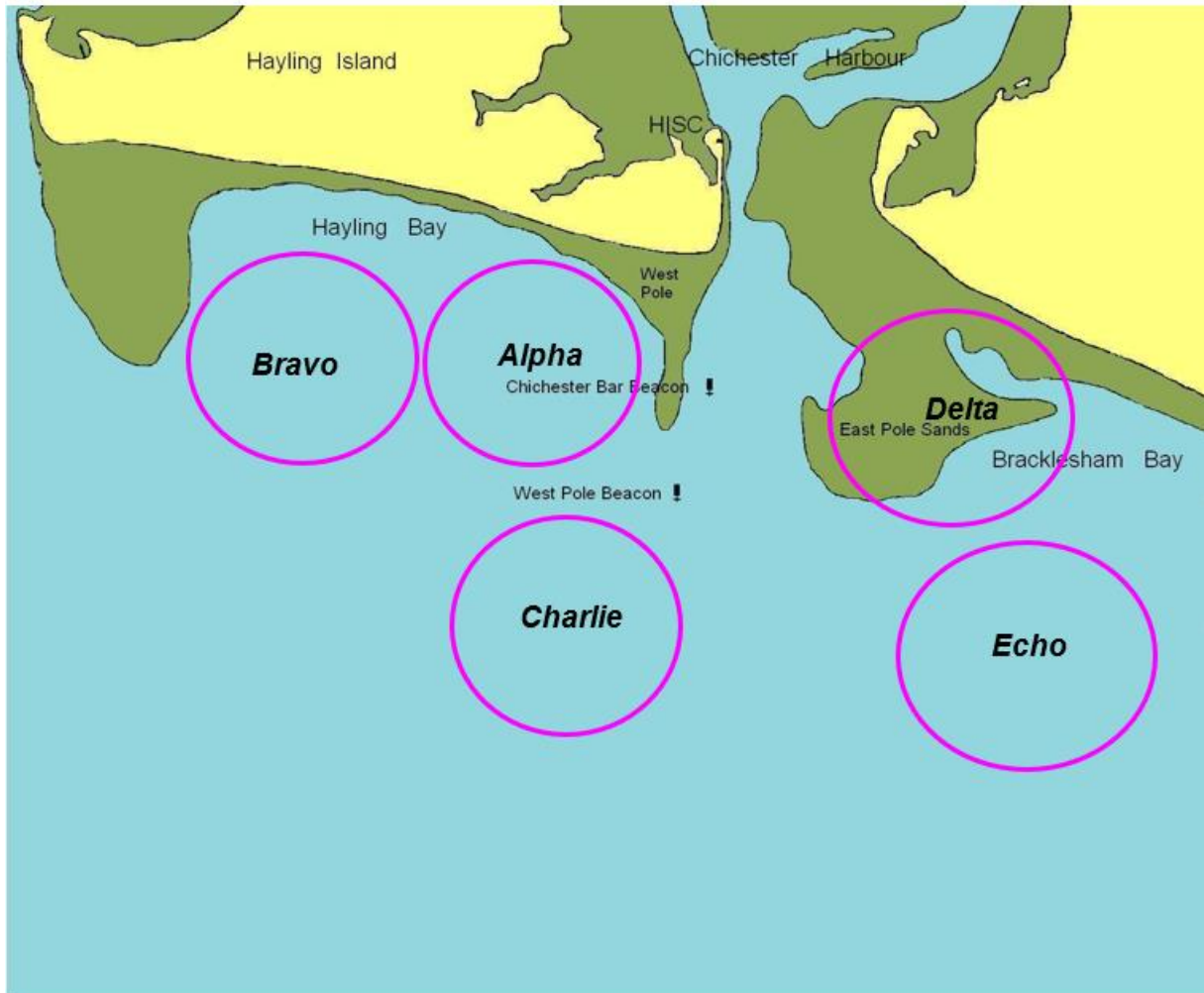
NOBLE
MARINE INSURANCE



3.5 Different final series fleets need not have completed the same number of final races. The boats in the Gold fleet will be ranked highest, except for a boat disqualified from a final series race under RRSs 5, 6, 7 or 69.

Appendix C

Racing areas



END OF SAILING INSTRUCTIONS



OVINGTON
built to win

Vaikobi
OCEAN PERFORMANCE

HARKEN



southeast
sailboats

NOBLE
MARINE INSURANCE

