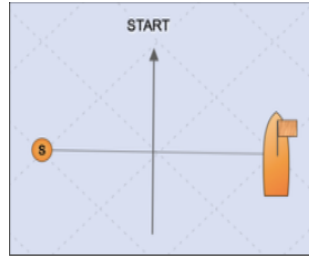
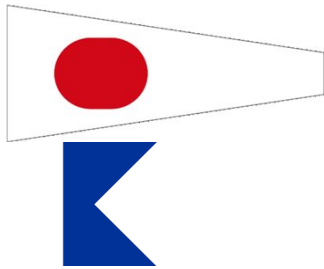


COURSE 1A



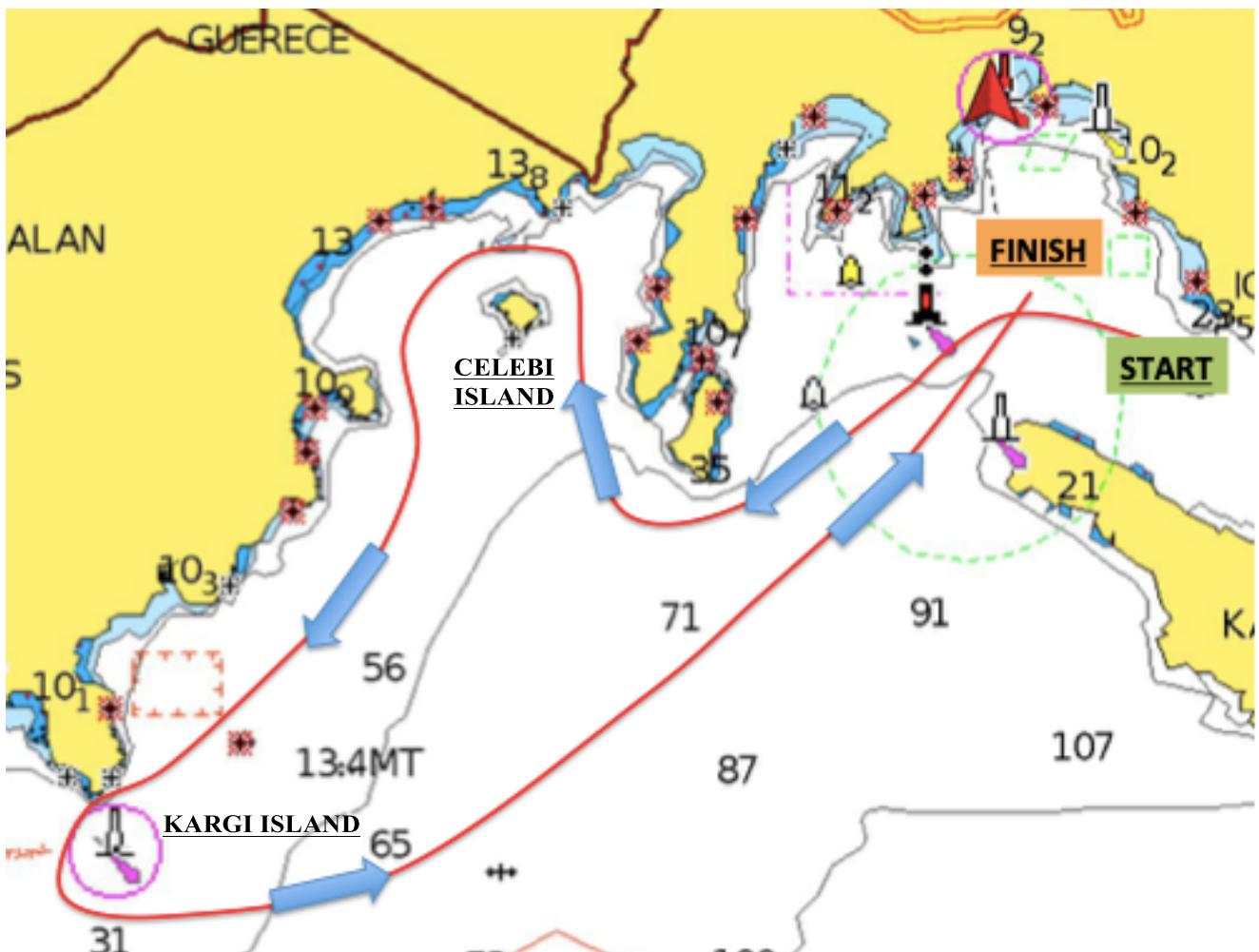
The RC may set a **Windward Mark** to obtain a start to windward, if necessary. If the windward mark is set, it will be no more than one (1) nautical mile from the starting line. Before the warning signal, the RC will display a **Green** flag indicating the mark shall be left to starboard or a **Red** flag which indicates the mark shall be left to port

ROUNDING ORDER:

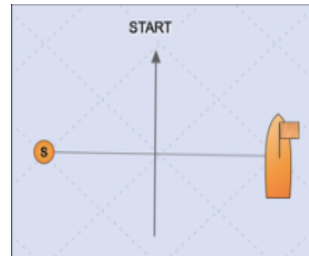
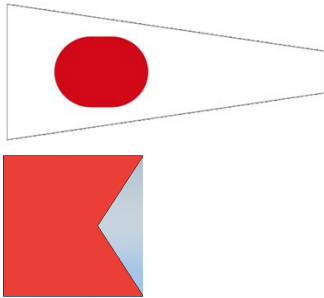
START – CELEBI ISLAND to port – KARGI ISLAND to port – FINISH

DISTANCE : Aprox. 17nm

TIME LIMIT : 240 minutes



COURSE 1B



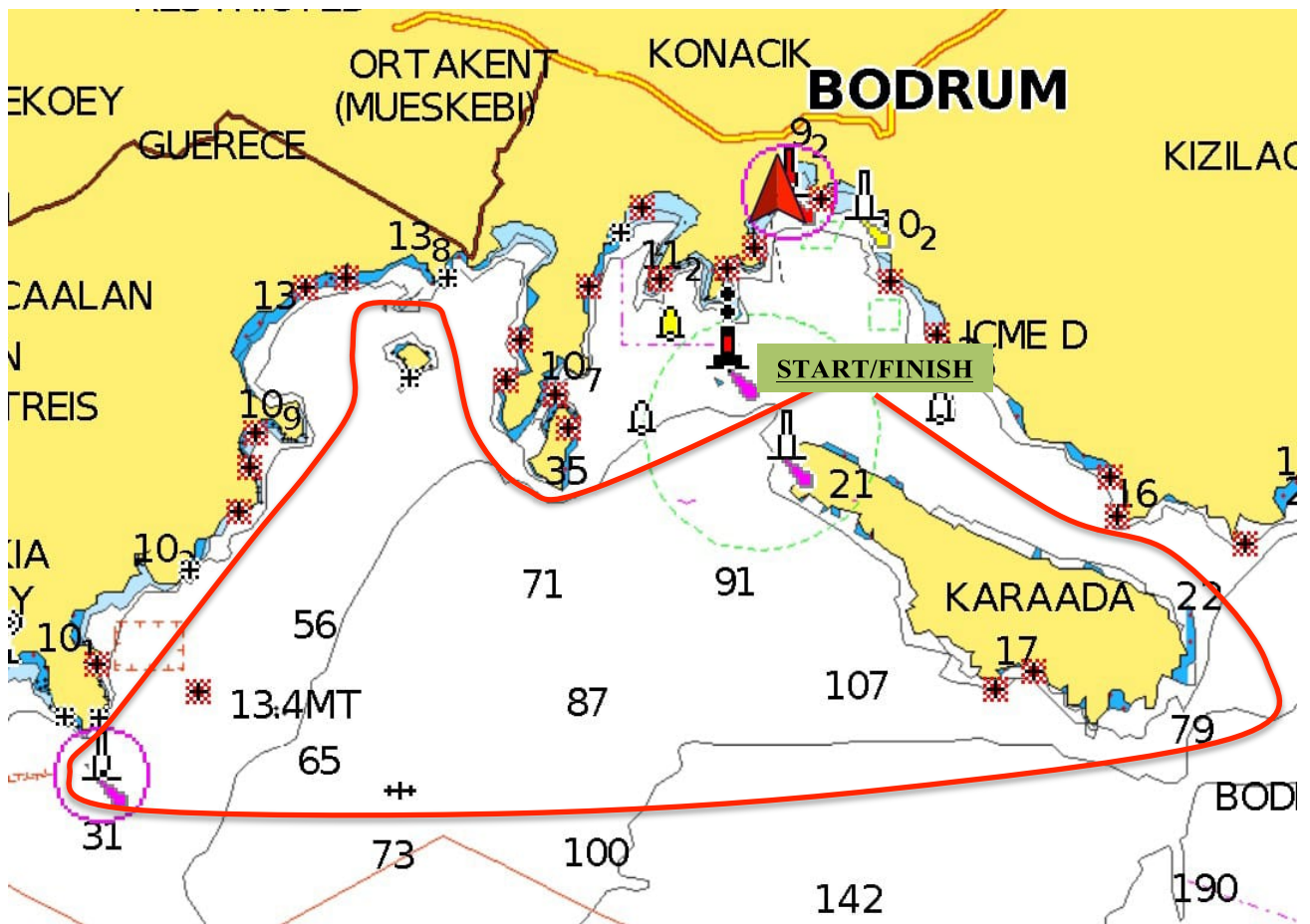
The RC may set a **Windward Mark** to obtain a start to windward, if necessary. If the windward mark is set, it will be no more than one (1) nautical mile from the starting line. Before the warning signal, the RC will display a **Green** flag indicating the mark shall be left to starboard or a **Red** flag which indicates the mark shall be left to port

ROUNDING ORDER:

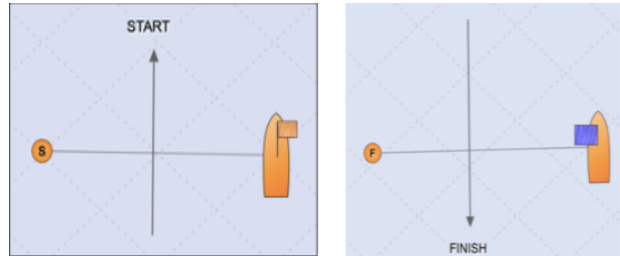
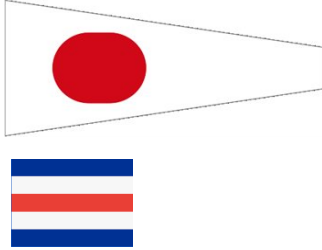
START – CELEBI ISLAND to port – KARGI ISLAND to port – KARAADA to port - FINISH

DISTANCE : Aprox. 24nm

TIME LIMIT : 300 minutes



COURSE 1C



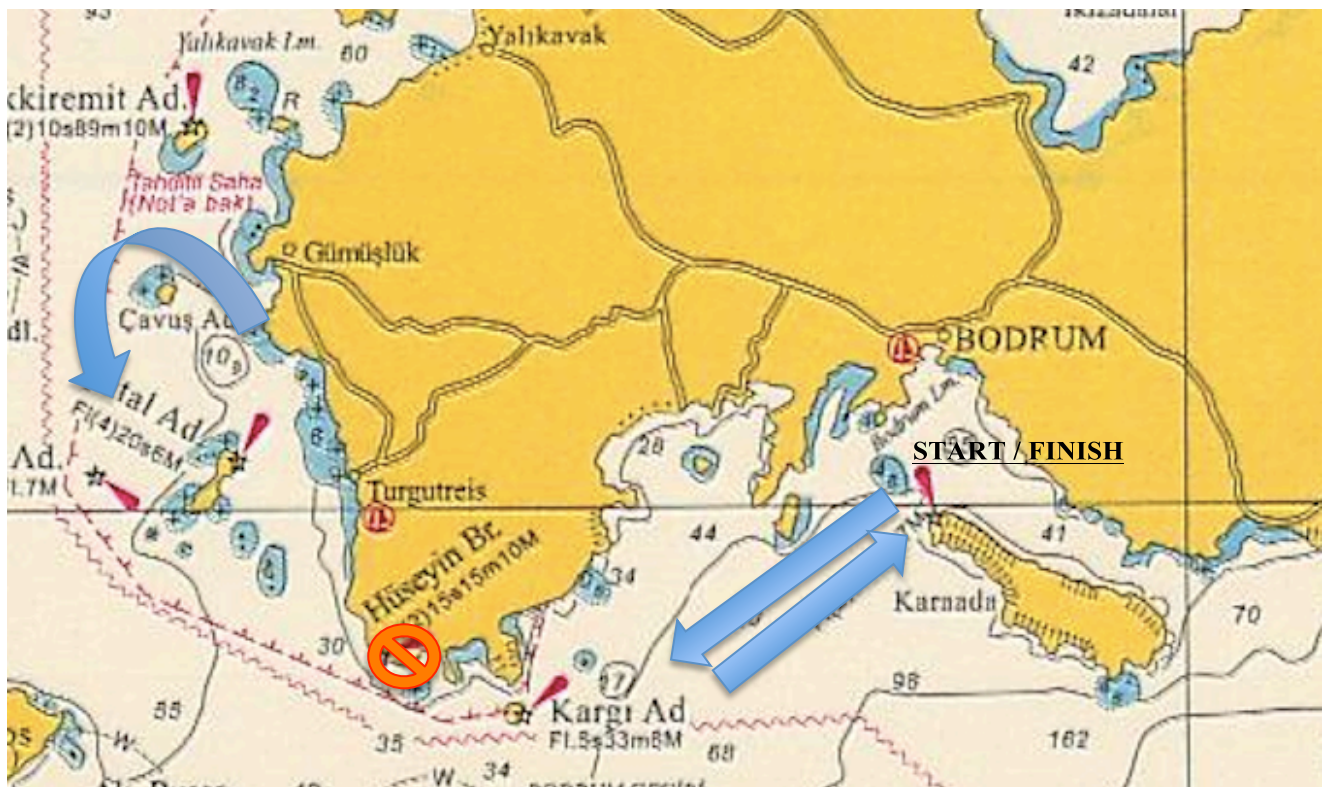
The RC may set a **Windward Mark** to obtain a start to windward, if necessary. If the windward mark is set, it will be no more than one (1) nautical mile from the starting line. Before the warning signal, the RC will display a **Green** flag indicating the mark shall be left to starboard or a **Red** flag which indicates the mark shall be left to port

ROUNDING ORDER:

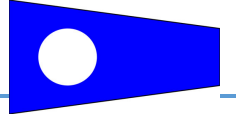
START – PASA KAYALIGI (HUSEYIN BURNU) to starboard – CAVUS ISLAND to port – PASA KAYALIGI (HUSEYIN BURNU) to port - FINISH

DISTANCE : Aprox. 32nm

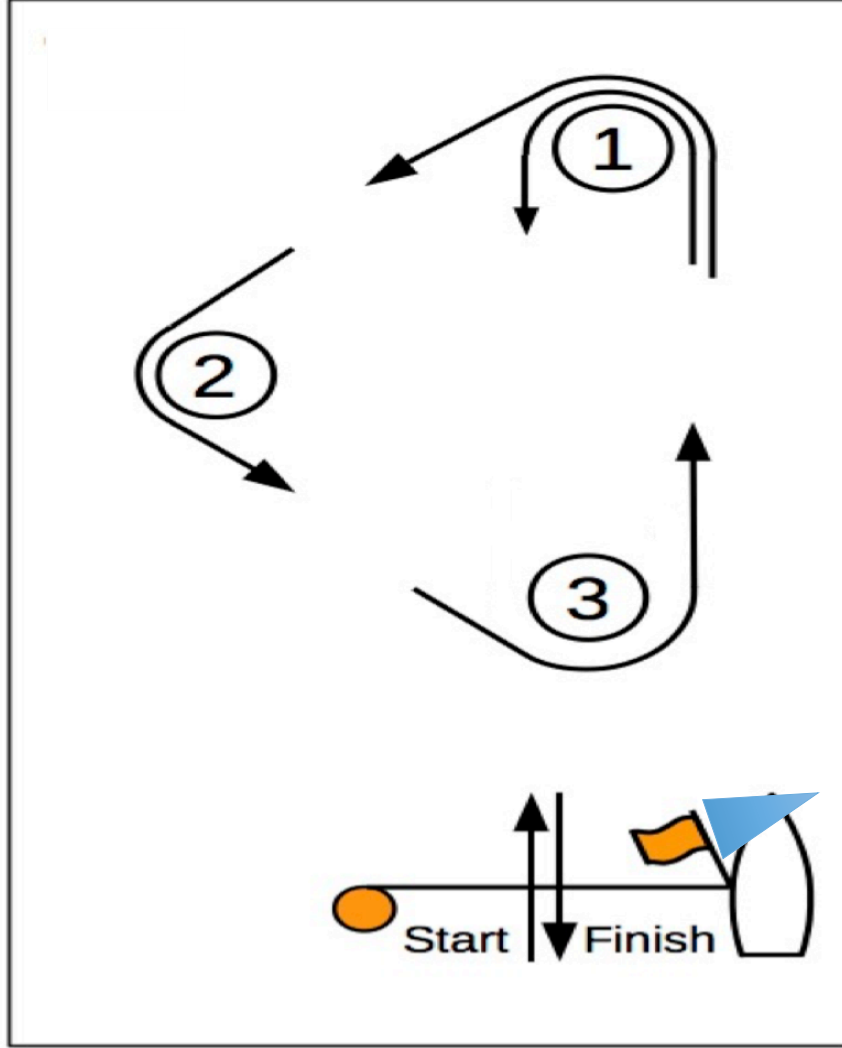
TIME LIMIT : 360 minutes



COURSE / ROTA 2



Rüzgar Altı Rüzgar Üstü / leeward-windward course



Rota Tanımı / Marking Rounding Order

Start - #1 - #2 - #3 - #1 - Finiş (Şamadıralar İskelede – Finişte Sancakta)

Start - #1 - #2 - #3 - #1 - Finish (Marks to Port – to Starboard at Finish)

Mesafe/distance

~8nm

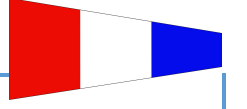
Zaman/Time Limit

180min.

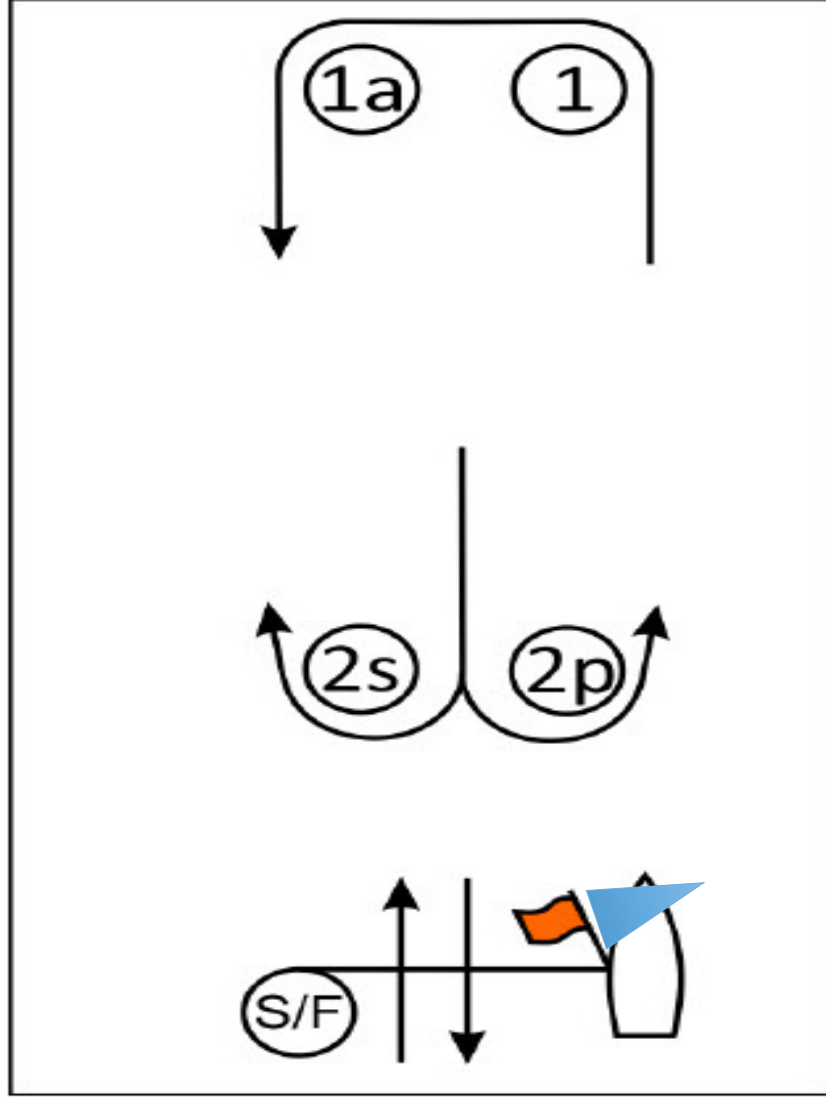
Rotalar için verilen mesafeler sadece fikir vermek için olup, bağlayıcı değildir ve düzeltme/protesto nedeni olamaz.

Marks and their locations for the races and the courses will be approximately and shall not be grounds for a request for redress.

COURSE / ROTA 3



Rüzgar Altı Rüzgar Üstü R-3 / leeward-windward course



Rota Tanımı / Marking Rounding Order

rt - #1 İskelede (to port) - #1a İskelede (to port) - 2 S/P - #1 İskelede (to port) - #1a İskelede (to port) - F

Mesafe/distance

~6nm

Zaman/Time Limit

120min.

Rotalar için verilen mesafeler sadece fikir vermek için olup, bağlayıcı değildir ve düzeltme/protesto nedeni olamaz.

Marks and their locations for the races and the courses will be approximately and shall not be grounds for a request for redress.