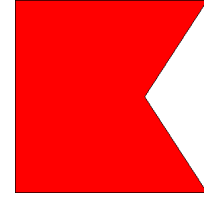
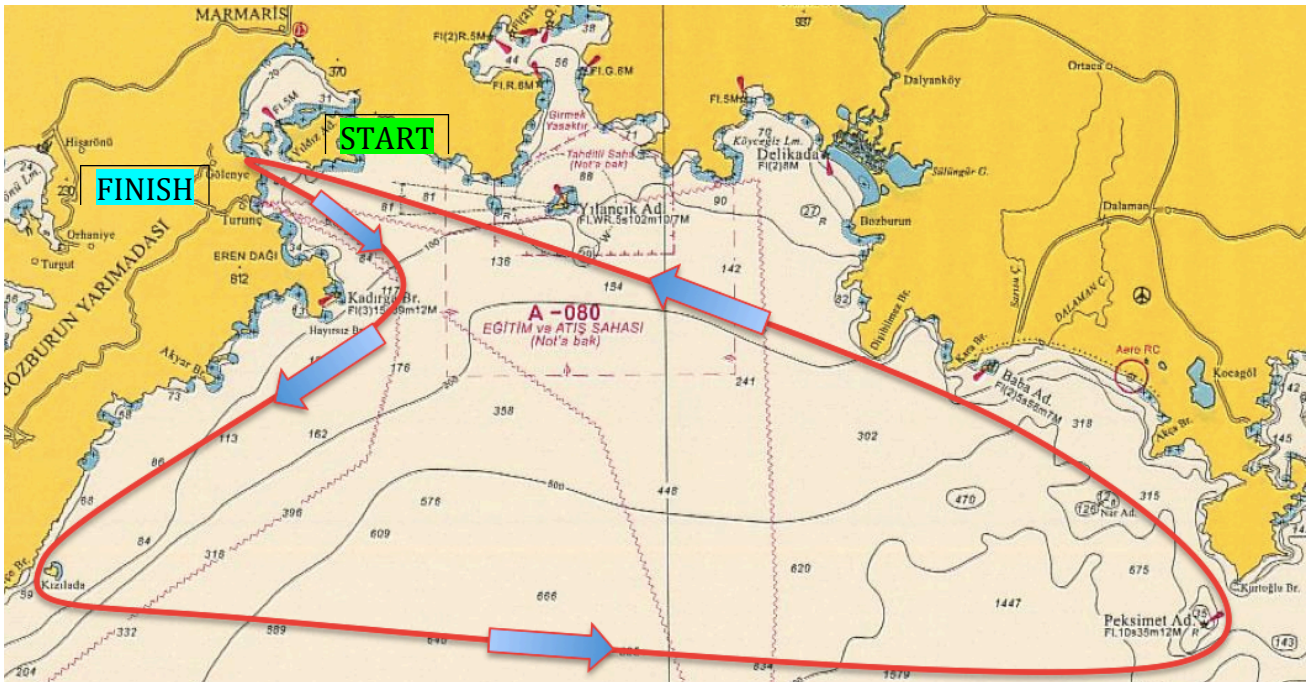


Coastal Course - B

ROUNDING ORDER



START - KIZILADA (leave to Port) - PEKSIMET ADASI (leave to Port) - Turnalı Kayası-Rocks/Yılcık Adası-Island (leave to Starboard) - FINISH



START (RC VESSEL)	:	36°47.279N / 28°17.130E
KIZILADA	:	36°36.000N / 28°7.685E
PEKSIMET ADASI	:	36°34.125N / 28°49.556E
RC FINISHING VESSEL	:	36°47.907N / 28°15.464E

START / FINISH

