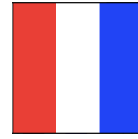


MARMARIS INTERNATIONAL RACE WEEK

Coastal Course - T ROUNDING ORDER



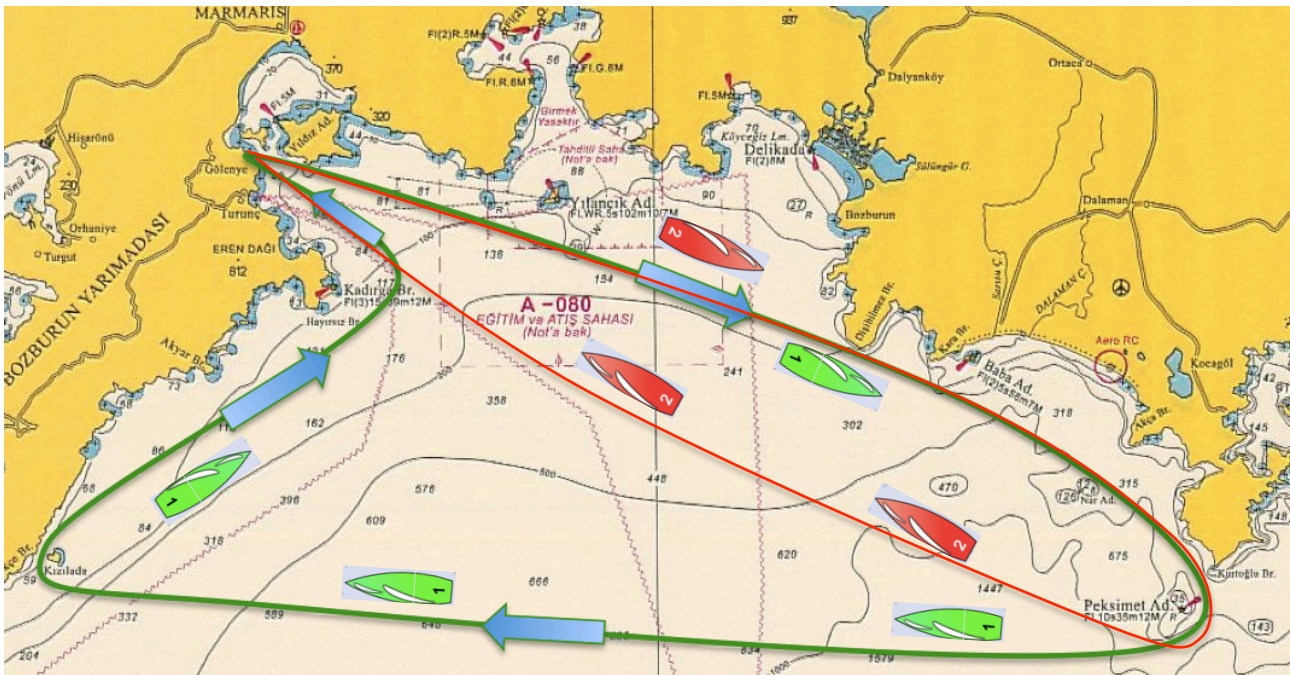
IRC divisions (Green) Fleet - 1

START - Turnalı Kayası / Yılancık Adası (leave to Port)
PEKSIMET ADASI (leave to Starboard) - KIZILADA (leave to Starboard) - FINISH



CHARTER divisions (Red) Fleet - 2

START - Turnalı Kayası / Yılancık Adası (leave to Port) - PEKSIMET ADASI (leave to Starboard) - Turnalı Kayası / Yılancık Adası (leave to Starboard) - FINISH



START (RC VESSEL)	:	36°47.279N / 28°17.130E	FOR BOTH FLEET
PEKSIMET ADASI	:	36°34.125N / 28°49.556E	FOR BOTH FLEET
KIZILADA	:	36°36.000N / 28°07.685E	(ONLY FOR IRC FLEET 1)
RC FINISHING VESSEL	:	36°47.907N / 28°15.464E	FOR BOTH FLEET

START / FINISH

