



# RS FEVA EUROCUP

ÁRON KUTASSY MEMORIAL CUP

KÁPTALANFÜRED, RS SAILING CENTER HUNGARY 2022



# RS Feva EuroCup

## Áron Kutassy Memorial Cup

### SAILING INSTRUCTIONS

---

[NP] denotes a rule that shall not be ground for protests by a boat. This changes RRS 60.1(a).

[NR] denotes a rule which shall not be ground for a request for redress by a boat. This changes RRS 62.1

---

#### 1. Rules

1.1. The event will be governed by the rules as defined in the Racing Rules of Sailing (RRS).

1.2. RRS 40.2 is changed to: “RRS 40.1 applies all times while afloat.”

#### 2. Changes to Sailing Instructions

2.1. Any change to the Sailing Instructions will be posted until 08.30 hrs on the day it will take effect.

2.2. The scheduled time of the races for each day shall be specified in a notice posted no later than 20.00 hrs or the protest time limit, whichever might be later, on the day before it will take effect.

#### 3. Communication with competitors

3.1. Notices to competitors will be posted on the official notice board, which will be situated close to the race office, and they will be repeated - unofficially - online here:

<https://www.racingrulesofsailing.org/documents/4398/event>.

3.2. The race office is located in the RS Sailing Center, Káptalanfüred.

3.3. [DP] From the first warning signal until the end of the last race of the day, or until a signal of the race committee meaning ‘Sail back to the shore’, except in an emergency, a boat shall not make voice or data transmissions and shall not receive voice or data communications that is not available to all boats.

#### 4. Code of conduct

4.1. Competitors and support persons shall comply with reasonable requests from race officials.

## 5. Signals made ashore

5.1. Signals made ashore will be displayed on the signal mast located in RS Sailing Center.

5.2. When flag AP is displayed ashore, '1 minute' in RRS Race Signals will be replaced by 'not less than 45 minutes'. This changes the meaning of AP in RRS Race Signals.

5.3. Flag 'D' with one sound means: boats shall not leave the shore until this signal is displayed. The warning signal will not be made before the scheduled time or less than 45 minutes after this signal is removed.

## 6. [NP] Schedule of races

<u>Date</u>	<u>Race(s)*</u>	<u>Time of scheduled warning signal</u>
July 6, Wednesday	Nr. 1. Nr. 2-3	12.00 hrs As soon as possible after Race 1.
July 7, Thursday	Nr. 4-6	As posted on the notice board
July 8, Friday	Nr. 7-9	As posted on the notice board
July 9, Saturday	Nr. 10-12	As posted on the notice board

\* Not sailed races may be sailed on the following days so that there are no more than 4 races on any day.

## 7. Class flags

7.1. For RS Feva: class insignia on black background.

7.2. For RS 500: Numeral pennant '5' 

## 8. Racing area

Racing area will be in the area marked by Balatonfűzfő, Siófok and Alsóörs. See diagram "Racing Area".

## 9. The courses

9.1. The course will be windward/leeward with an offset mark and gate for RS Feva and an extra leeward mark for RS 500. Except for the gate, all marks shall be rounded to port.

9.2. Course for RS Feva: Start - 1 - 1a - 2S/2P - 1 - 1a - 2P - Finish. See course diagram.

9.3. Course for RS 500: Start - 1 - 1a - 3 - 1 - 1a - 2P - Finish. See course diagram.

9.4. No later than the warning signal, the starting vessel will display the approximate compass bearing and the distance to mark 1.

9.5. The race will not be shortened before the end of the leg to Mark 1 for the second time. This changes RRS 32.

9.6. When one gate mark is missing, the remaining mark shall be rounded to port.

9.7. [DP] The zone marked by the starting vessel, the pin end and the marks 2s and 2p are an obstruction and a 'no-go zone' for RS 500 on the run to mark 3 (leg 3), and on the beat after they have rounded mark 3 (leg 4).

## 10. Marks

10.1. Marks 1, 1a, 2P & 2S will be yellow cylindrical buoys.

10.2. Mark 3 will be a red cylindrical buoy.

10.3. The change of course marks will be red cylindrical buoys.

10.4. The starboard side starting mark and port side finishing mark will be an RC power boat, except for on July 9<sup>th</sup>, when it will be a sailing yacht.

10.5. The port side starting mark will be a white buoy flying a red-white striped flag.

10.6. The starboard side finish mark will be a white buoy flying a blue-white striped flag.

## 11. The start

11.1. Races will be started using RRS 26 with a warning signal made 5 minutes before the starting signal.

11.2. Racing sequence will be: RS 500, RS Feva.

11.3. The starting line is between a staff displaying an orange flag to on the starting vessel on starboard and the course side of the mark defined in 10.5 to port.

11.4. A boat starting later than 4 minutes after its starting signal will be scored DNS. This changes RRS 63.1, A4 and A5.

11.5. [DP] After the orange flag has been displayed, only boats of the classes which are about to start shall enter the starting area which is a zone marked by two straight lines parallel to and 25 meters above and below the starting line ending 25 meters from the starting vessel and the pin-end mark, respectively (see illustration). All other, non-starting boats shall leave the zone immediately.

## 12. Changing the next leg of the course

12.1. To change the next leg of the course at marks 2S/2P or 3, the race committee will lay only one change mark as described in 10.3 with no offset mark and remove the original marks as soon as practicable.

12.2. To change the next leg of the course at mark 1a, the race committee will, if possible, lay new marks 2S/2P and 3. If only one mark is laid, it shall be left to port.

### 13. The finish

13.1. The finishing line is between a staff displaying a blue flag on a race committee boat and the course side of the finishing mark, as defined in 10.6.

### 14. Penalty system

14.1. RRS 44.1 and P2.1 is changed so that the two-turns penalty is replaced by the one-turn penalty.

14.2. [NR] If a member of the protest committee, afloat on the course, witnesses a breach of the rules of RRS Part 2 or RRS 31, she/he may indicate it with a whistle and by waving a red flag. If no penalty is taken or no protest lodged by a competitor, the protest committee may protest one or more boats.

14.3. Appendix P will apply as changed by SI 14.1 and SI 14.4.

14.4. Rule P2.2. and P2.3 will not apply, so the second and subsequent penalties are the same as the first penalty.

### 15. Time limits and target times

15.1. [NR] Target time of the races is 40 minutes.

15.2. The overall time limit is 70 minutes.

15.3. If no boat has passed Mark 1 within 25 minutes, the race will be abandoned.

15.4. Boats failing to finish within 15 minutes after the first boat sails the course and finishes will be scored "DNF" without a hearing. This changes Rules 35, A4 and A5.

### 16. Hearing requests

16.1. Protests and requests for redress shall be delivered either online or in hard copies on request forms that are available at the race office before the end of the protest time limit.

16.2. The protest time limit is 60 minutes after the last boat of the class has finished the last race of the day, or the race committee signals 'no more racing today' afloat, whichever is later. If 'no more racing today' will be signalled ashore, the protest time limit is 30 minutes after the signal. The protest time limit will be posted on the official notice board. The same protest time applies to all protests by the race committee, technical committee and jury, and requests for redress based on an incident in the racing area.

16.3. Notices will be posted within 20 minutes of the protest time limit to inform competitors of hearings in which they are parties or named as witnesses.

16.4. Notice of protests by the race committee, technical committee or protest committee will be posted to inform boats under rule 61.1(b).

16.5. A list of boats that have been penalised for breaking RRS 42 will be posted.

## 17. Safety regulations

17.1. [NP] [DP] A boat that retires from a race shall notify the race committee as soon as possible. The boat shall complete a retirement declaration form either online or at the protest desk on return ashore.

17.2. Competitors who require assistance from rescue boats should wave one arm with hand open. If no assistance is required, the arm should be waved with fist closed.

17.3. If considered necessary a competitor may be ordered by a race organisation boat to abandon his or her boat and board a rescue boat.

## 18. [NP] [DP] Replacement of equipment or crew

18.1. Substitution of equipment will not be allowed unless authorized by the race committee.

18.2. Substitution of crew will not be allowed unless authorized by the race committee.

18.3. These requests shall be made either online or in writing at the first reasonable opportunity.

## 19. Equipment and measurement checks [NP] [DP]

19.1. A boat or equipment may be inspected at any time for compliance with the class rules and sailing instructions.

19.2. On the water, a boat can be instructed by a technical or race committee member to proceed immediately to a designated area for inspection.

## 20. Official vessels

20.1. Race committee vessels will display a white flag marked "RC".

20.2. Protest committee boats will display a white or yellow flag marked "JURY".

20.3. Technical committee boats will display a white flag marked "TC".

20.4. Official media boats will display a flag marked "PRESS".

## 21. [DP] Support teams

21.1. Team leaders, coaches and other support personnel may use "support craft" to assist their competitors on the water. They shall register at the regatta office prior to the first scheduled race, providing details of their boats and distinctive identification, which shall include flying a WHITE flag showing the national / club 3 letter code in BLACK (minimum height 120mm), of the country of origin.

21.2. Subject to 22.3, team leaders, coaches and other support boats shall stay more than 50 metres:

21.2.1. to leeward of the starting line during the starting sequence and

21.2.2. from any course mark and from any racing boat from the time of the preparatory signal until all boats have finished the race.

21.3. At all times, support boats shall comply with the directions given by the Race Committee. In particular this includes assisting with rescues when requested to do so.

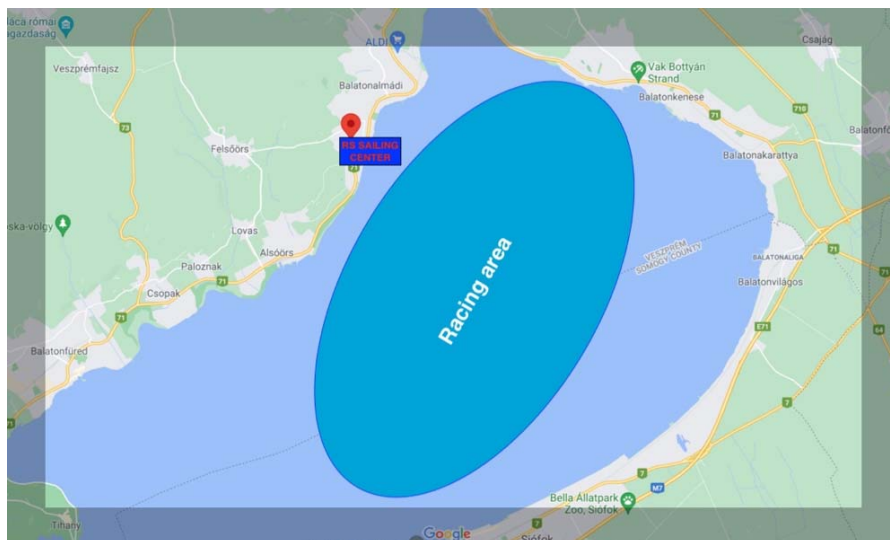
21.4. Support boats must be on call on VHF channel 77 at all times when afloat.

21.5. See diagram for support team no-go zones.

## 22. Trash disposal [NP] [DP]

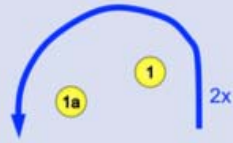
Trash may be placed aboard support or official boats.

### Racing area (illustration to SI 8)

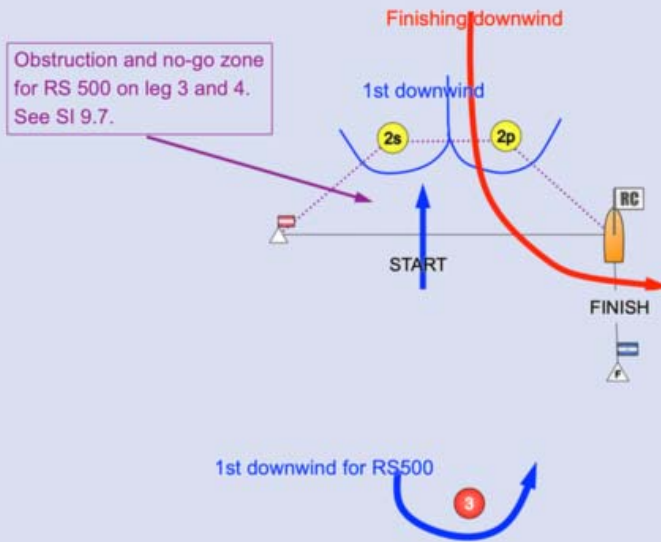


### Course diagram (illustration to SI 9)

RS FEVA EURO CUP AND HUNGARIAN CHAMPIONSHIP  
RS 500 VGYE CUP

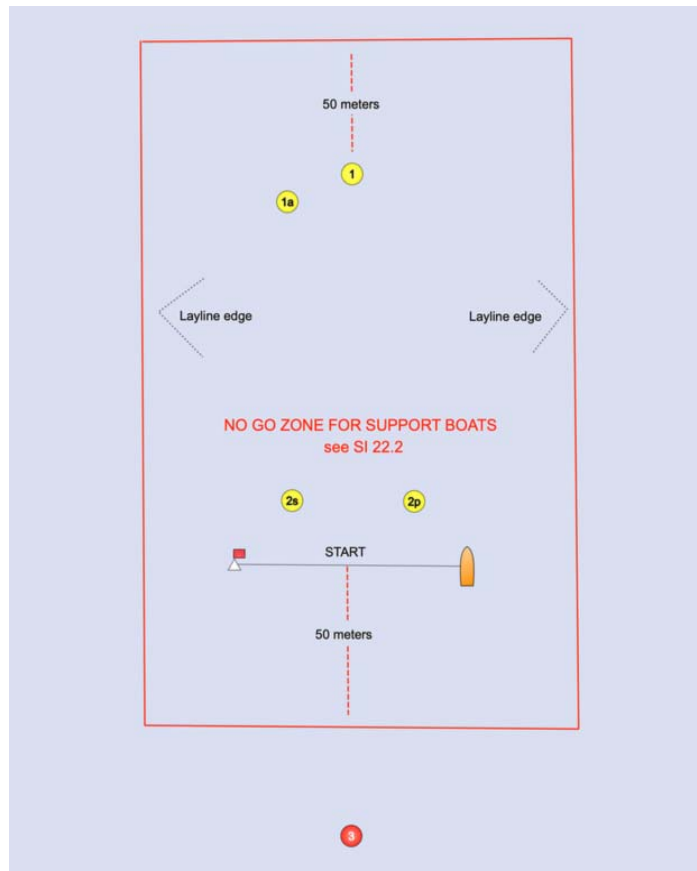


Course RS FEVA: Start-1-1a-2s/2p-1-1a-2p-Finish  
Course RS500: Start-1-1a-3-1-1a-2p-Finish





Limited entry zone for support boats (illustration to SI 22.2)



Starting area (illustration to SI 11.5)

