

Con il Patronato di



**Regione
Lombardia**



4000

2022 EUROCUP 4000 **27st – 30th July 2022**

Sailing Instructions

1. Rules

- 1.1. The event will be governed by the rules as defined in the 2021-2024 Racing Rules of Sailing ("RRS") of the International Sailing Federation (WS) and 4000 Class Association Rules (as appropriate),
- 1.2. In this event advertising is free as per class regulation and in accordance with WS regulation 20.
- 1.3. Exclusion & Limitation of Liability
A boat is entirely responsible for its own safety, whether afloat or ashore, and nothing, whether in the Notice of Race or Sailing Instructions or anywhere else, reduces this responsibility.
It is for the boat to decide whether it is fit to sail in the conditions in which it will find itself. By launching or going to sea, the boat confirms that it is fit for those conditions and that its crew is competent to sail and compete in them.
The boat is required to hold adequate insurance and in particular to hold insurance against third party claims in the sum of at least 1,500,000.00 euro (or its equivalent in another currency) for the duration of the event.
Nothing done by the organisers can reduce the responsibility for any loss, damage, death or personal injury, however it may have occurred, as a result of the boat taking part in the racing. The Organizers encompass everyone helping to run the race and the event, and include the organizing authority, the race committee, the race officer, patrol boats and beach masters.
The provision of patrol boats does not relieve the boat of its responsibilities.

2. Entry and Measurement

- 2.1. Only fully paid up members of the relevant Class Association may enter the event. The helm stated on the entry form shall helm for all the races of the event. Substitution of a crew member will not be allowed without prior written approval of the Jury
- 2.2. Personal **Floating Device** shall be worn at all times whilst on the water. This alters RRS 40.
- 2.3. Competitors are required to allow the race committee, the class committee or a duly authorized representative of either body to measure or inspect a boat at any time when it is not racing.
- 2.4. Checks may be carried out to test the compliance of competitors with their Class Association measurement Rule, "Weight and Righting Moment Equalization".
The procedure for the 4000s is that teams selected for checking will be notified immediately prior to launching, afloat or within five minutes of arriving ashore. It is the responsibility of selected sailors to remain with their boat until measurement checks are completed. The penalty for failure to comply with the Class Association rules on weight and righting moment equalization is disqualification from all races already sailed on that day, subject to a protest hearing if required by the competitor. This amends RRS A5.
The Crew Weights and Crew Righting Moments for each individual in the team shall be rounded to the nearest whole number before they are applied to the Chart, or added together. Before going afloat prior to their first race competitors must declare their rack and weight settings on the declaration sheet. The weights and settings which are entered onto the declaration sheet must be witnessed and signed for by another competitor. For the purposes of measuring, the crew will be defined as the person who will wear the trapeze harness during the race. The weight of the helm shall be measured as the actual weight of helm in light clothing plus two kilograms. The weight of the crew shall be measured as the actual weight of the crew in light clothing plus three kilograms.

3. Notices to Competitors, Changes in Sailing Instructions and Signals Made Ashore

- 3.1. Notices to competitors will be posted on the Official Notice Board in the www.racingrulesofsailing.org/documents/3740/event
- 3.2. Any change to the Sailing Instructions will be posted on the Official Notice Board, not later than one hour before on the day that it will take effect, except any change to the schedule of races will be posted by 7 p.m. on the day before it will take effect.
- 3.3. Flag Signals made ashore will be hoisted on halyards on the Official Flagpole.
- 3.4. Hoisting a flag "D" with one sound signals means "The designated class is allowed to leave the shore and proceed to the race area shown where one or more races will be held. The warning signal for the first race will not be made less than 30 minutes after flag "D" is hoisted. **Consistent with this rule No boat can leave its own hauling until the "Delta" flag will be hoisted**

4. Schedule of Races

- 4.1. Dates of racing:

26 st July	14:30 -17.30	Registration		
26 st July	18:30	Welcome cocktail		
27 st July	09.00 – 11.00	Registration	13:00	First warning signal
28 nd July	-----	Races		
29 rd July	-----	Races		
30 th July	-----	Races		
30 th July	a.s.a.p.	Prize Giving		

twelve (12) races are scheduled and three races are required to be constitute a series.

The scheduled time for the warning signal for the first race of each subsequent day of the event will be announced by the Race Committee after the deadline for submitting protests for each day has expired.
On the last day of the event no warning signal will be made after 04.00 pm.

- 4.2. Races subsequent to the first race of each day will be started as soon as possible after the finish of the last boat in the previous race or the expiry of the Time Limit (whichever is sooner).

5. Class Flag

- 5.1. The Class Flag for the 4000 will be the 4000 flag

6. Racing Area

6.1. From the area in front of Gravedona to the one in front of Pianello Lario

7. Course and Marks

7.1. The course configuration and the order of the rounding marks will be as shown in Appendix A of these sailing instructions. The number of laps is not defined in advance, but it depends on the target time limit of about 45 minutes. When "W" flag i.c. is displayed on a RIB close to mark 1, the leading boat shall continue around the course and after next rounding mark P, proceed to the finish line as described in SI 9. All other boats shall do likewise after completing the same number of laps as the leader.

7.2. Shorten Course

RRS 32 will apply except that in addition the course may be shortened to control the length of the race so that the leader finishes after approximately 45 minutes..

Marks 1, 1A, 2G will be cylindrical yellow

Marks P will be cylindrical orange

Marks F will be cylindrical yellow

8. The Start

8.1. Fixed line starts will be used.

8.2. The starting line for all races will be between a staff flying an orange flag on the Committee Boat and mark P.

Races will be started using rule 26

A Race committee rib displaying the flag **appropriate for the rule used** may pass to windward of the fleet in the event of an abandonment, postponement or general recall which means: "the RC has signaled an abandonment, postponement or general recall. Boats are to return to the starting area immediately".

9. The Finish

9.1. The finishing line for all races will be between a staff on the Committee Boat displaying a **blue** flag and the mark F. Boats must finish from the direction of the last mark. The boats must leave F mark on their right. In all cases this means rounding marks 1, 1A and P, then proceeding to the finish as indicated in Appendix 1 of these SIs.

If laid, boats must not pass between the inner distance mark and the committee boat.

10. Penalty System

10.1. RRS 44.2 (Two Turns Penalty) will apply except that only one turn, including one tack and one gybe, shall be required (**instead of two of both**)

10.2. A boat that has taken a penalty under rule 44.1 shall complete an acknowledgement form at the race office within the protest time limit

11. Time Limit

11.1. RRS 35 will not apply. Courses may be shortened so that the leader should finish after approximately 45 minutes. If no boat finishes within 90 minutes, the race shall be abandoned, and re-sailed where possible. Boats which fail to finish within 20 minutes of the first boat in her group or class will be scored 'Did Not Finish' for that race. If no boat has rounded the first mark 15 minutes after the start, the race shall be abandoned, and re-sailed where possible.

Summary Table

Class	Race Time Limit	Race Target Time	Finishing Window	Time limit for mark 1
Classe	Tempo Limite Prova	Tempo Ottimale	Finestra di Arrivo	Tempo Limite boa 1
Laser 4000	90	45	20	15

12. Protests

12.1. **Protests have to be submitted via the "Racing Rules of Sailing platform". Paper forms for protests, request for redress, reclassifying requests will only be allowed for exceptional reasons with prior authorization from the regatta office;** protests shall be delivered there within the protest time limit.

12.2 The protest time limit is 60 minutes after the last boat has finished the last race of the day;

12.3 Notices will be posted when the protest time limit expires to inform competitors of hearings in which they are parties or named as witnesses; hearings will be held in the jury office beginning 20' after the notices posting time.

12.4 Notices of protests by the race committee or protest committee will be posted to inform boats under rule 61.1(b).

12.5 On the last day of racing, a request to reopen a hearing must be posted within the time limit for protest if the party requesting reopening was informed of the decision the day before or within 30 minutes when the applicant has received information in the day in question, this changes RRS 66.

12.6 On the last day of racing, a request of redress must be posted within the time limit for protest if the party requesting redress was informed of the decision the day before or within 30 minutes when the applicant has received information in the day in question, this changes RRS 66.

13. Scoring System

13.1. **The RRS Appendix A2.1 , is amended as follow:** If 3 or fewer races are sailed there will be no discard. If 4 or more races are sailed there will be one discard, 8 or more races, two discards, 12 or more races, three discards. Series ties will be broken in accordance with RRS appendix A8.

14. Safety regulation

14.1. Prior to the first warning signal of the first race of each day, boats shall sail past the stern of the RC boat to be recorded.

14.2. A boat that retired from a race shall notify the RC as soon as possible.

14.3. **In compliance with RRS 37 the channel for. search and rescue will be:** VHF 74

15. Support boats

15.1. Team leaders, coaches and other support personnel shall stay outside areas where boats are racing from the time of the preparatory signal for the first start, until the boats have finished or the RC signals a postponement, general recall or abandonment.

15.2. Support boats shall hoist a white flag with "S" inside. If the Race Committee **displays flag "V "all the** support boats **must** participate in rescue operations.

16. Television coverage

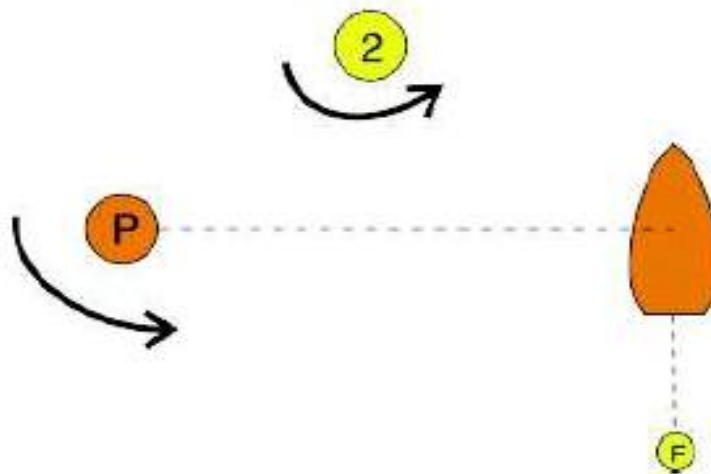
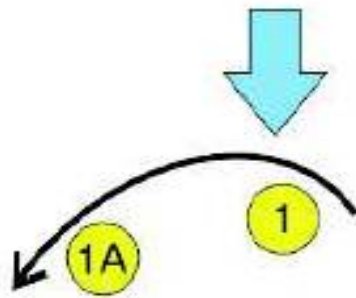
16.1. An action of a camera boat shall not be grounds for redress under RRS 62 (Redress).

16.2. In participating in the regatta, a competitor automatically grants the Organizing Authority, the event sponsor and its agents, the right in perpetuity, to make, use and show, from time to time and at their discretion, any motion pictures, still pictures and live, taped or filmed television and other reproductions of him/her during the period of the event in which the competitor participates and in all material related to the event without compensation. The competitor also grants the Organizing Authority, the event sponsor and its agents, the right in perpetuity, to publish details the competitor has supplied on the internet.

Appendix A

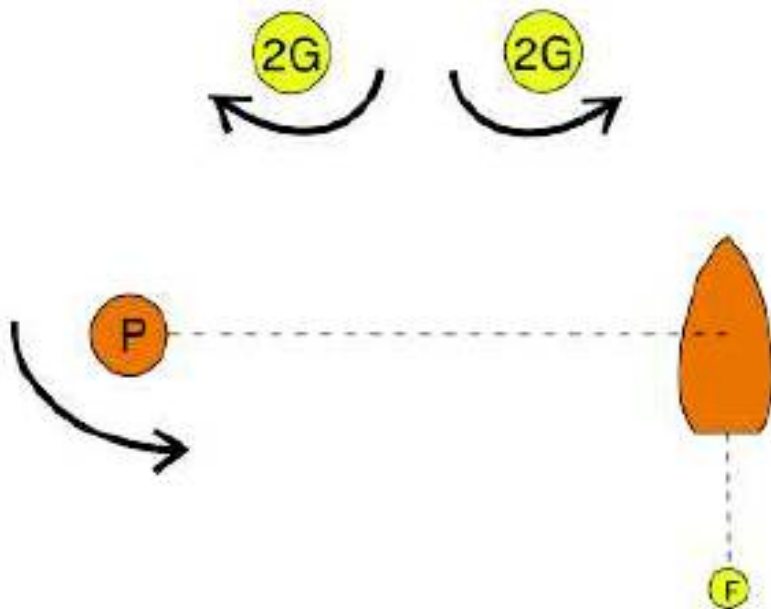
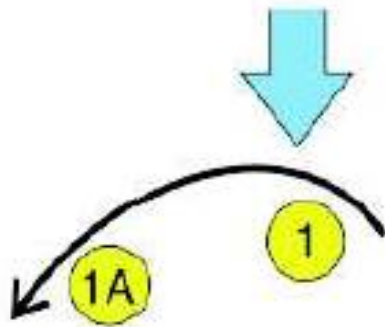
Course 1 – Pennant 1

Start-1-1A-2-(1-1A-2)..... 1-1A-P-Finish
Lenth: 0.7-0.8 nm between mark 1 and mark 2



Course 2 – Pennant 2

Start-1-1A-2G-(1-1A-2G)..... 1-1A-P-Finish
Lenth: 0.7-0.8 nm between mark 1 and mark 2G



Weight and Righting Moment Equalization

7.1. Weight and righting moment equalization rules are part of the stringent one design principles of the 4000 Class. It is the responsibility of the helm and crew to comply with the following requirements whilst racing.

7.2. Minimum number of standard weights to be carried onboard by a 4000 shall be determined in accordance with the equalization chart in Appendix 2. The helm and crew weights shall be measured under the conditions set out in Rule 7.4. The weights must be provided by a licensed Builder, and must be 5.5 – 6.5 Kg. These weights must be positioned and secured in the area defined by the licensed Builder.

7.3. Maximum rack setting shall be determined in accordance with the equalization chart in Appendix 2. The helm and crew weights shall be measured under the conditions set out in Rule 7.4.

7.4. For the purposes of measuring, the crew will be defined as the person who will wear the trapeze harness during the race. The weight of the helm for the purposes of Rule 7 shall be measured as the actual weight of helm in light clothing plus two kilograms. The weight of the crew for the purposes of Rule 7 shall be measured as the actual weight of the crew in light clothing plus three kilograms.

7.5. Total weight of all clothing and equipment worn by the helm and crew shall not exceed 12 Kg each, weighed in accordance with Appendix J of the Racing Rules of Sailing. No clothing or equipment of the helm and crew shall be worn with the specific feature or intention of adding weight by water absorption or holding water in pockets, compartments, containers or any other method.

7.6. Ballast Weights and Rack Settings shall not be changed from the time the sailboat has been launched until fifteen minutes after the sailboat has come ashore.

7.7. Any helm or crew may be required to demonstrate their compliance with Rule 7 when required to do so by the Chief Measurer (or one of his appointed assistants), another competitor or the race committee. Once informed of the measurement request, the helm and crew are required to remain by their boat until the measurement is complete.

7.8. Where a helm and crew have completed a race, and not retired, and subsequently it has been determined that they have failed to comply with Rule 7, they shall be penalized. Where the Chief Measurer (or one of his appointed assistants) considers the breach of Rule 7 to have been significant and deliberate he shall issue a written warning to the helm and crew. A second occurrence within a period of one year will result in the helm and crew being suspended from membership of the Class Association and the matter being reported to the National Sailing Authority.

