

MIYC 2023 Standart Yarış Talimatı EK - 2

MIYC 2023 KIŞ TROFESİ YARIŞ ROTALARI



Rotalar için verilen mesafeler, RC sinyal/finiş teknesinin yerleri ve çizimler sadece fikir vermek için olup, bağlayıcı değildir ve düzeltme/protesto nedeni olamaz.

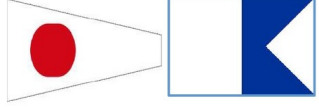


MIYC 2023 KIŞ TROFESİ YARIŞ ROTALARI COĞRAFİ ROTALAR

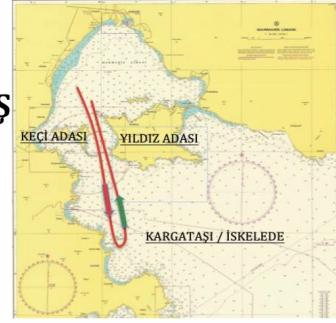


ROTA #1-A

START - Keçi Adası Sancakta - Kargataşı İskelede - Yıldız Adası Sancakta - FİNİŞ

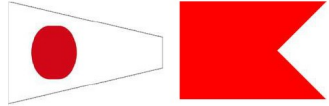


Mesafe 12nm
Zaman Limiti 180dk.



ROTA #1-B

START - Keçi Adası Sancakta - Kargataşı İskelede -
Yalancı Şamandıra İskelede - Yıldız Adası Sancakta - FİNİŞ

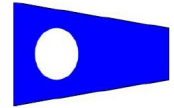


Mesafe 18nm
Zaman Limiti 240dk.

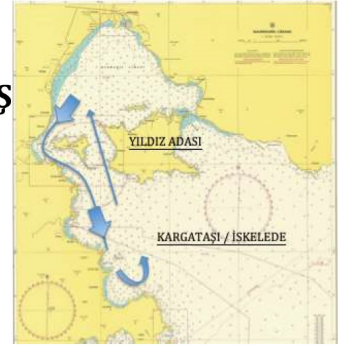


ROTA #2

START - Keçi Adası İskelede - Kargataşı İskelede - Yıldız Adası Sancakta - FİNİŞ

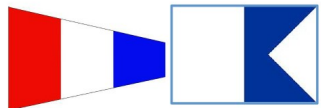


Mesafe 12nm
Zaman Limiti 180dk.



ROTA #3-A

START - Keçi Adası Sancakta - FİNİŞ

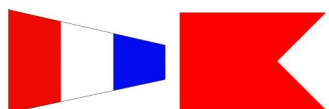


Mesafe 8nm
Zaman Limiti 120dk.



ROTA #3-B

START - Keçi Adası İskelede - FİNİŞ



Mesafe 8nm
Zaman Limiti 120dk.





MIYC 2023 KIŞ TROFESİ YARIŞ ROTALARI

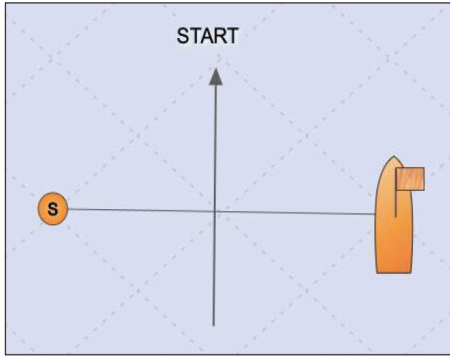


Rüzgar Üstü Şamandıra varsa;

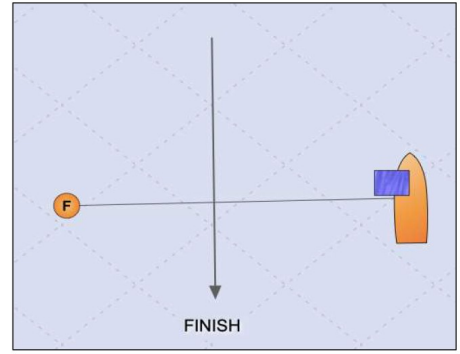
***YEŞİL Flama Toka #1 - OFFSET ŞAMANDIRA SANCAKTA**

***KIRMIZI Flama Toka #1 - OFFSET ŞAMANDIRA İSKELEDE**

START / FİNİŞ



***START HATTI RÜZGARA GÖRE EN
UYGUN YERDE KURULACAKTIR



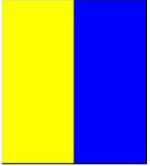
***FİNİŞ HATTI ROTAYA GÖRE EN
UYGUN YERDE KURULACAKTIR

ALTERNATİF ROTALAR :

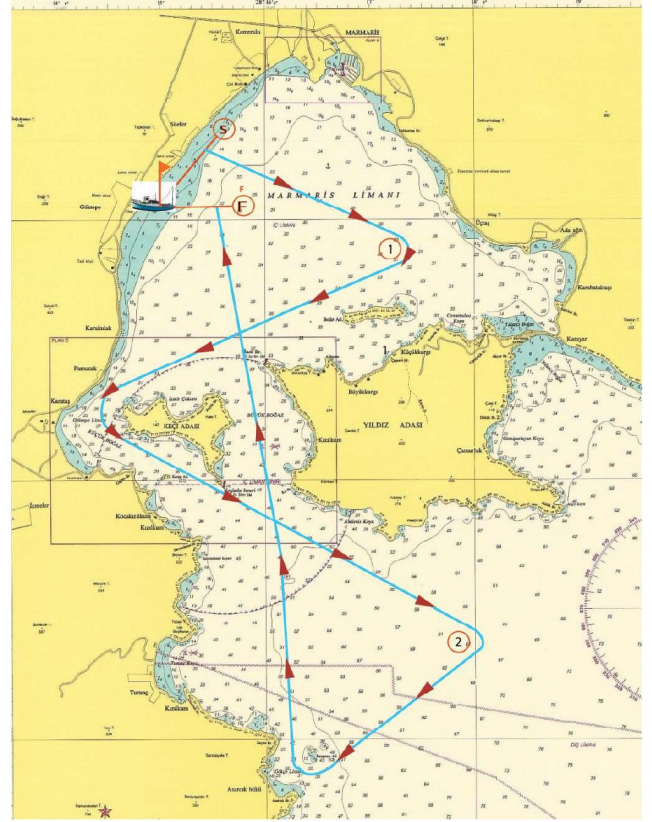
ROTA K-A

Start

- #1 Sancakta
- Keçi Adası İskelede
- #2 Sancakta
- Karga Taşı Sancakta
- Yıldız Adası Sancakta
- Finish

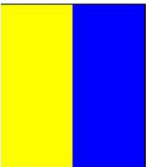


Mesafe 16nm
Zaman Limiti 225dk.

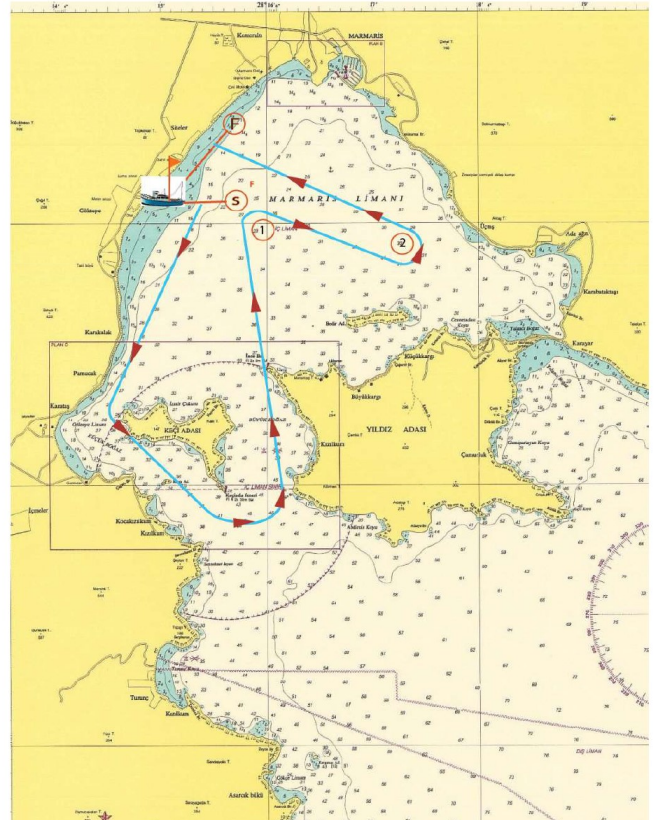


ROTA K-B

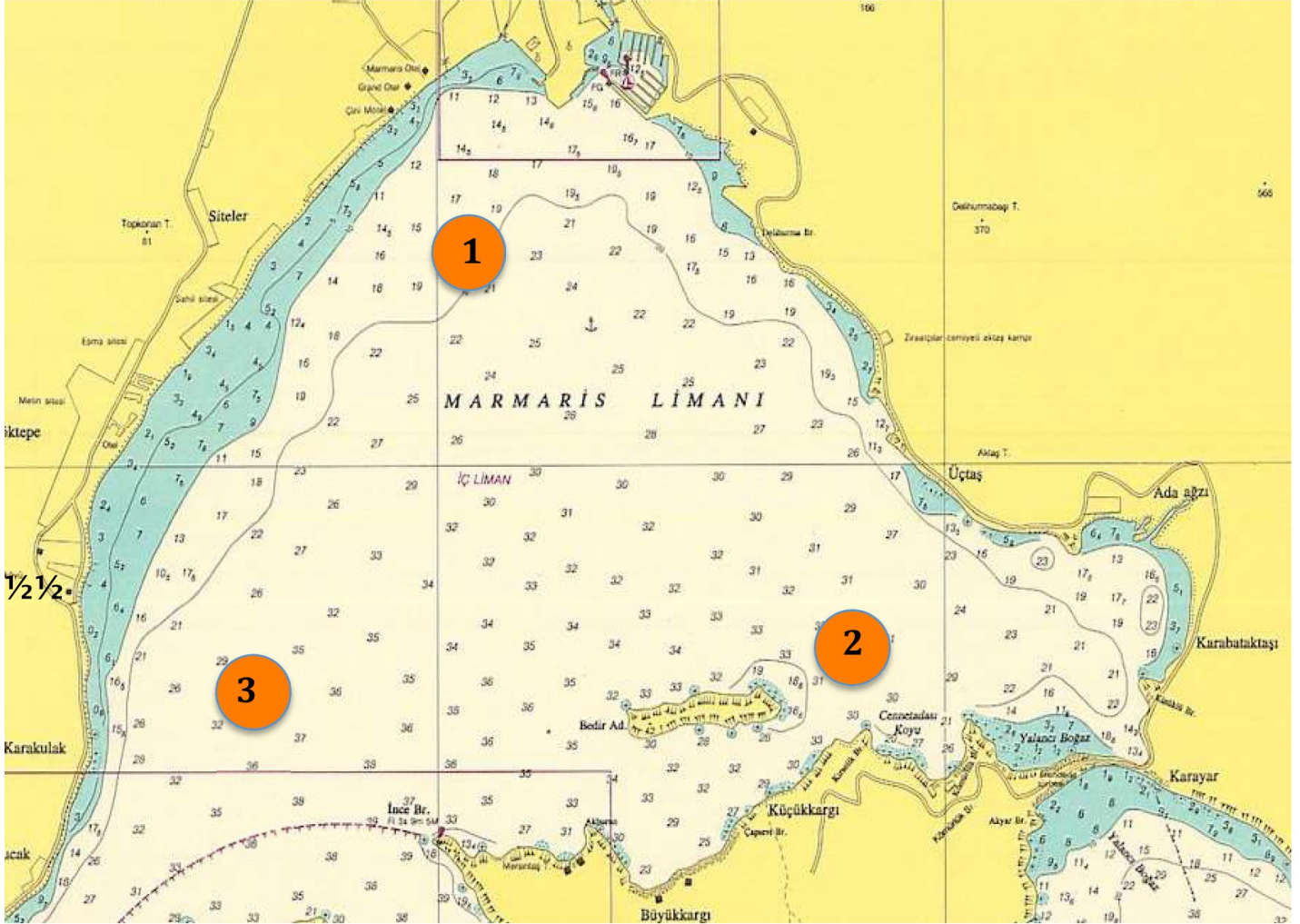
- Start
- Keçi Adası İskelede
- #1 Sancakta
- #2 İskelede
- Finish



Mesafe 8nm
Zaman Limiti 120dk.



KLASİK ÜÇGEN ROTA (ROTA #4)



Mesafe 7.5nm
Zaman Limiti 120dk.

ŞAMANDIRALAR SANCAKTA

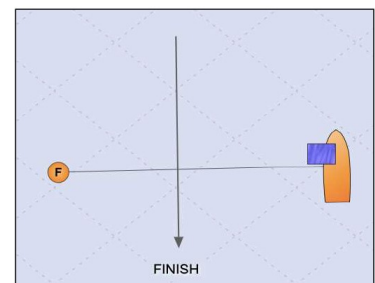
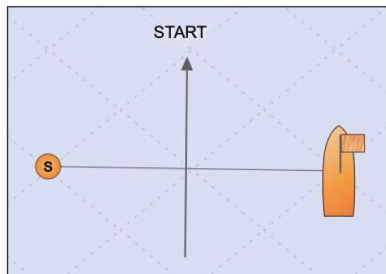
AYDIN S(1) - 2 - 3 - 1 - 2 - F(1)
BURAK S(2) - 3 - 1 - 2 - 3 - F(2)
CEMAL S(3) - 1 - 2 - 3 - 1 - F(3)

ŞAMANDIRALAR İSKELEDE

DENİZ S(1) - 3 - 2 - 1 - 3 - F(1)
ENGİN S(2) - 1 - 3 - 2 - 1 - F(2)
FELENK S(3) - 2 - 1 - 3 - 2 - F(3)

START / FİNİŞ ŞAMANDIRA (PİN END) İSKELEDE

*Start ve/veya FİNİŞ hatları numaralı şamandıraların arkasında kurulabilir.

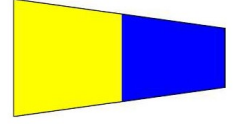




MIYC 2023 KIŞ TROFESİ YARIŞ ROTALARI



RÜ RA ROTA (ROTA #5)



Mesafe 6nm
Zaman Limiti 90dk.

