

# 2023 IRC Welsh National Championship



## Sailing Instructions

Incorporating the Celtic Championship - Featuring

- IRC 1 & 2 Inshore
- Cruisers



12<sup>th</sup> to 14<sup>th</sup> May





## 1. RULES

- 1.1. The Event will be governed by the rules as defined in The Racing Rules of Sailing.
- 1.2. IRC rules part A, B & C shall apply for IRC class 1, 2 and Coastal fleets.
- 1.3. Handicapping by RYA YTC shall apply to cruisers unless the RC are forced to use RYA National Handicap for Cruisers (NHC).

## 2. NOTICE TO COMPETITORS

- 2.1. Notices to competitors will be posted electronically on Racingrulesofsailing.org and it's associated free app.
- 2.2. All communications between competitors and the race committee "IRC Race Officer" for IRC 1 and 2 inshore shall be on VHF channel 72.
- 2.3. Cruisers will communicate with the race committee "PSC Bridge" using channel 17.
- 2.4. In case of difficulty with transmissions on the relevant VHF channel. VHF channel 37 will be used as an alternative channel. Flag '3rd Substitute' will be flown from the Committee boat and/or PSC Bridge to indicate this change.
- 2.5. If a red flag is displayed on the committee boat or bridge, a boat is blocking the working VHF channel. Please check your VHF PTT (Transmit) buttons.

## 3. CHANGES TO SAILING INSTRUCTIONS

- 3.1. Any change to the sailing instructions will be posted one hour before any race to which it applies, except that any change to the schedule of races will be posted by 2000 on the day before it will take effect.
- 3.2. Amendments made afloat will be signalled by the display of flag W with three sound signals. The Race Committee may communicate these either verbally or in writing.

## 4. SIGNALS MADE ASHORE

- 4.1. Signals made ashore will be communicated on Racingrulesofsailing.org (RRS) and may be displayed at the PSC bridge.
- 4.2. When flag AP is displayed ashore, '1 minute' is replaced with 'not less than 45 minutes' in the race signal AP.

## 5. SCHEDULE OF RACES and CLASS FLAGS

- 5.1. Dates of racing: 12<sup>th</sup> May to 14<sup>th</sup> May.
- 5.2. Number of races:

Class	Number	Max Races per Day
IRC 1 – Class Flag 1	9	4,4,3
IRC 2 – Class Flag 2		
YTC Cruisers – Class Flag 3	5	2,2,1
It is intended all fleets will race a coastal segment.		
One extra race per day may be sailed, provided that no class becomes more than one race ahead of schedule and the change is made according to instruction 3.		



- 5.3. The scheduled time of the warning signal for all Fleets for the 3 race days: All Fleets - Friday 12<sup>th</sup> 12:00 Saturday 13<sup>th</sup> 13:25 Sunday 14<sup>th</sup> 14:55.
- 5.4. To alert boats that a race or sequence of races will begin soon, a call will be made on CH17/72 at least five minutes before a warning signal is made.
- 5.5. On the last day of the regatta no warning sequence will commence after 16:00 BST.
- 5.6. A coastal race may be held on any day, if this race is run, then there will be a maximum of two races only on this day and the coastal race result is none discardable.

## 6. RACING AREA

- 6.1. Cardigan Bay.

## 7. COURSES IRC 1 AND 2 PLUS CRUISERS

- 7.1. **Cruisers**
- 7.2. Will race either fixed or variable courses round club racing marks which will be displayed on the CHPSC Bridge.
- 7.3. Fixed Courses 1 to 68 are in [Appendix C – Fixed Courses 2023](#).
- 7.4. Courses 70 to 99 (if used) will be posted on the official notice board and may be repeated on the CHPSC Web page. A multiplier number, (black on a white background) may follow indicating all marks to be repeated.
- 7.5. Variable course. The course will be displayed on the CHPSC Bridge or committee boat using numbers with a red or green background denoting whether a club mark is to be passed to port or starboard respectively. A multiplier number, (black on a white background) may follow indicating all marks to be repeated.
- 7.6. **IRC 1 and 2**
- 7.7. will race either IRC Inshore Laid courses or a fixed mark course as displayed on the committee boat.
- 7.8. Laid Courses. The diagrams in [Appendix A - IRC 1&2 Inshore Laid Courses](#) show the courses, including the approximate angles between legs, the order in which marks are to be passed, and the side on which each mark is to be left.
  - 7.8.1. No later than the warning signal, the race committee signal boat may display the approximate compass bearing of the first leg.
  - 7.8.2. If additional races are to be sailed this will be signalled by the display of Flag G at the finish of the last Scheduled Race.
  - 7.8.3. If only one gate mark is laid (or remains) it shall be rounded to port.
- 7.9. Round The Cans. The course to be sailed will be notified on the VHF Channel for the relevant Fleet.
  - 7.9.1. The course to be sailed will be announced by the relevant committee boat using the call signs described on VHF. The list of rounding marks and the finishing mark, each identified by number (or letter), together with their required side will be announced on VHF. There will be no visual course signals. The marks shall be rounded or passed in the order announced. There may be an additional Black inflatable mark positioned to windward of the start (between 1 and 1.5 miles) this will be passed as described on the VHF course announcement.

## 8. CLUB RACING MARK POSITIONS - PWLLHELI

- 8.1. The position of the fixed marks for the 2023 championship, to be used for IRC Round the Cans and/or Cruiser courses, are as per [Appendix B - Pwllheli Sailing Club Racing Marks](#).

## 9. THE START

- 9.1. The starting line for cruisers: The Start Line is a transit of the orange pole on the PSC Bridge, a white mast with an orange top section on the foreshore and the ODM (mark O). The seaward end of the line is bounded by an ODM (mark O). The shore end may be bounded by an IDM. Boats shall pass between these marks (when both are present), in the direction of the first mark of the course, to start.
- 9.2. Boats whose warning signal has not been made shall avoid the starting area during the starting sequence for other races.
- 9.3. A boat starting later than 4 minutes after her starting signal will be scored Did Not Start without a hearing. This changes rules A4 and A5.
- 9.4. If any part of a boat's hull is on the course side of the starting line during the two minutes before her starting signal and she is identified, the race committee will attempt to broadcast her sail number on VHF Channel for the relevant Fleet. Failure to make a broadcast or to time it accurately will not be grounds for a request for redress. This changes rule 62.1(a).
- 9.5. IRC 1 and 2 will have a committee boat start as per the [Appendix A - IRC 1&2 Inshore Laid Courses](#).

## 10. CHANGE OF THE NEXT LEG OF THE COURSE

### Shorten Course Cruisers

- 10.1. Shortening of course will be in accordance with RRS32.
  - 10.2. In addition, amending RRS32, the course may be shortened at any mark, signalled by two sound signals and Flag S on the PSC bridge as the first boat approaches the last mark intended to be rounded. The fleet will then proceed after rounding the mark to the appropriate finish line. (Defined below) which will be crossed from the course direction.
  - 10.3. The Race Officer may announce his intention to shorten course on VHF Channel 17/72.
  - 10.4. Alternatively, a course may be shortened at a mark/turn point at some point on the course, if directed by the race officer on the radio, all boats should record their finish/mark rounding time.
- IRC 1 and 2**
- 10.5. To change the next leg of the course, the race committee will lay a new mark (or move the finishing line) and remove the original mark as soon as practicable. When in a subsequent change a new mark is replaced, it will be replaced by an original mark.
  - 10.6. Shorten Course: Afloat. Any course may be shortened at any mark. In addition, when a finishing line described in SI 11 has been laid to leeward or in the vicinity of the intended leeward mark, and when flag S is displayed with two sound signals from the finishing boat the meaning of flag S is changed to 'the course is changed', and the intended leeward mark(s) is/are the last mark of the course. Pass the mark to port or if a gate sail between the gate marks from the direction of the previous mark and proceed through the finishing line. (Class flags will be used if not all classes are finishing). Additional sound signals may be given, and/or a rib may wave a blue flag at competitors in the vicinity of mark 3 to draw boats attention to the changed course (at the Race Officers discretion).
  - 10.7. If "F" is displayed with "S" as 10.6 above, then all boats finish, at the conclusion of that lap, as set out, regardless of the number of laps they have completed. Scoring will then be conducted on the Average Lap scoring method vis the sailwave software used.

## 11. THE FINISH

- 11.1. The finish Line for cruisers is the same as the start, a transit of the orange pole on the PSC bridge and the ODM (mark O).
- 11.2. The finish line for the IRC 1 and 2 will be as per the course set by the RO and as shown in the [Appendix A - IRC 1&2 Inshore Laid Courses](#).
- 11.3. The Coastal race (if run) will use the Plas Heli Finish Line, a line between Pwllheli Fairway Buoy (Iso.2s) located N52 53.000 W4 22.900 and Plas Heli Bridge located - N52 53.336 W4 24.230 as per the picture in below.

**Please note this is not the usual line used as the start in Pwllheli.**



## 12. TIME LIMITS AND TARGET TIMES

- 12.1. Time limits are as follows:

Class	Time limit
IRC 1 and 2	2.5 hrs (Does not apply to the Coastal Race which is 6 hrs).
Cruisers	2.5 hrs

- 12.2. Boats failing to finish within 30 minutes (1hr for coastal race) after the first boat sails the course and finishes will be scored Did Not Finish without a hearing. This changes rules 35, A4 and A5.

## 13. HEARINGS AND REQUESTS FOR REDRESS

- 13.1. Hearing forms are available at RRS and shall be delivered through that medium. Hearing and requests for redress or reopening shall be delivered there within the appropriate time limit.
- 13.2. For each class, the hearing time limit is 90 minutes after the last boat has finished the last race of the day or the race committee signals no more racing today, whichever is later.
- 13.3. Notices will be posted no later than 30 minutes after the hearing time limit to inform competitors of hearings in which they are parties or named as witnesses. Hearings will be held in the protest room, located at Plas Heli, beginning at the time posted.
- 13.4. Notices of hearings by the race committee or hearing committee will be posted to inform boats under rule 61.1(b).



- 13.5. Breaches of instructions, 16.1 and 17.1 will not be grounds for a hearing by a boat. This changes rule 60.1(a). Penalties for these breaches may be less than disqualification if the hearing committee so decides.
- 13.6. On the last scheduled day of racing a request for redress based on a hearing committee decision shall be delivered no later than 30 minutes after the decision was posted. This changes rule 62.2.
- 13.7. The Post Race Penalty and the Advisory Hearing and RYA Arbitration procedures of the RYA Rules Disputes Procedures will be available. Decisions from RYA Arbitration can be referred to a protest committee but cannot be reopened or appealed. See the Official Notice Board for details.

## 14. SCORING

### IRC 1, 2

- 14.1. Two races are required to be completed to constitute a series.
- 14.2. When fewer than 6 races have been completed, a boat's score will be the total of her race scores.
- 14.3. When 6 or more races have been completed, a boat's series score will be the total of her race scores excluding her worst score. The Coastal Race cannot be discarded.

### Cruiser

- 14.4. All races to count, one race required for a series.

## 15. SAFETY REGULATIONS

- 15.1. A boat that retires from a race shall notify the race committee as soon as possible.

## 16. REPLACEMENT OF CREW OR EQUIPMENT

- 16.1. Substitution of competitors will not be allowed without prior written approval of the race committee which can only be sought via RRS online.

## 17. EVENT ADVERTISING

- 17.1. Boats shall display event advertising supplied by the organizing authority as supplied.

## 18. PRIZES

- 18.1. Prizes will be given as described in the Notice of Race, additional prizes may be awarded.
- 18.2. Sports boats will sail with class 1 and/or 2 dependant on rating but will have a separate trophy.

## 19. DISCLAIMER OF LIABILITY

### Risk Statement

- 19.1. RRS Rule 3 of the Racing Rules of Sailing states: "The responsibility for a boat's decision to participate in a race or to continue racing is hers alone."
- 19.2. Sailing is by its nature an unpredictable sport and therefore inherently involves an element of risk. By taking part in the event, each competitor agrees and acknowledges that:
  - 19.2.1. They are aware of the inherent element of risk involved in the sport and accept responsibility for the exposure of themselves, their crew and their boat to such inherent risk whilst taking part in the event.
  - 19.2.2. They are responsible for the safety of themselves, their crew, their boat, and their other property whether afloat or ashore.
  - 19.2.3. They accept responsibility for any injury, damage or loss to the extent caused by their own actions or omission.
  - 19.2.4. Their boat is in good order, equipped to sail in the event and they are fit to participate.



- 19.2.5. The provision of a race management team, patrol boats and other officials and volunteers by the event organiser does not relieve them of their own responsibilities.
- 19.2.6. The provision of patrol boat cover is limited to such assistance, particularly in extreme weather conditions, as can be practically provided in the circumstances.
- 19.2.7. It is their responsibility to familiarise themselves with any risks specific to this venue or this event drawn to their attention in any rules and information produced for the venue or event and to attend any safety briefing held for the event.
- 19.2.8. They are responsible for ensuring that their boat is equipped and seaworthy so as to be able to face extremes of weather; that there is a crew sufficient in number, experience and fitness to withstand such weather; and that the safety equipment is properly maintained, stowed and in date and is familiar to the crew.

## 20. INSURANCE

- 20.1. Each participating boat shall be insured with valid and adequate third-party liability insurance per incident in the sum of £3,000,000.

## 21. Data Privacy Statement

- 21.1. The personal information you provide to the organising authority will be used to facilitate your participation in the event.
- 21.2. If you have agreed to be bound by the Racing Rules of Sailing and the other rules that govern the event (the rules), the legal basis for processing that personal information is contract.
- 21.3. If you are not bound by the rules, the legal basis for processing that personal information is legitimate interest.
- 21.4. Your personal information will be stored and used in accordance with the organising authority's privacy policy.
- 21.5. When required by the rules, personal information may be shared with the RYA and/or World Sailing. The results of the event and the outcome of any hearing or appeal may be published.

# Appendix A - IRC 1&2 Inshore Laid Courses

<b>OX</b>	<b>COURSE: OUTER with reaching finish</b>
<b>Signal</b>	<b>Mark Rounding Order</b>
<b>OX2</b>	<b>Start - 1 - 2 - 3s/3p - 2 - 3p - 5 - Finish</b>
<b>OX3</b>	<b>Start - 1 - 2 - 3s/3p - 2 - 3s/3p - 2 - 3p - 5 - Finish</b>

<b>IX</b>	<b>COURSE: INNER with reaching finish</b>
<b>Signal</b>	<b>Mark Rounding Order</b>
<b>IX2</b>	<b>Start - 1 - 4s/4p - 1 - 2 - 3p - 5 - Finish</b>
<b>IX3</b>	<b>Start - 1 - 4s/4p - 1 - 4s/4p - 1 - 2 - 3p - 5 - Finish</b>

<b>L</b>	<b>COURSE: WINDWARD / LEEWARD with reaching finish</b>
<b>Signal</b>	<b>Mark Rounding Order</b>
<b>L2</b>	<b>Start - 1 - 4s/4p - 1 - 4p - Finish</b>
<b>L3</b>	<b>Start - 1 - 4s/4p - 1 - 4s/4p - 1 - 4p - Finish</b>
<b>L4</b>	<b>Start - 1 - 4s/4p - 1 - 4s/4p - 1 - 4s/4p - 1 - 4p - Finish</b>

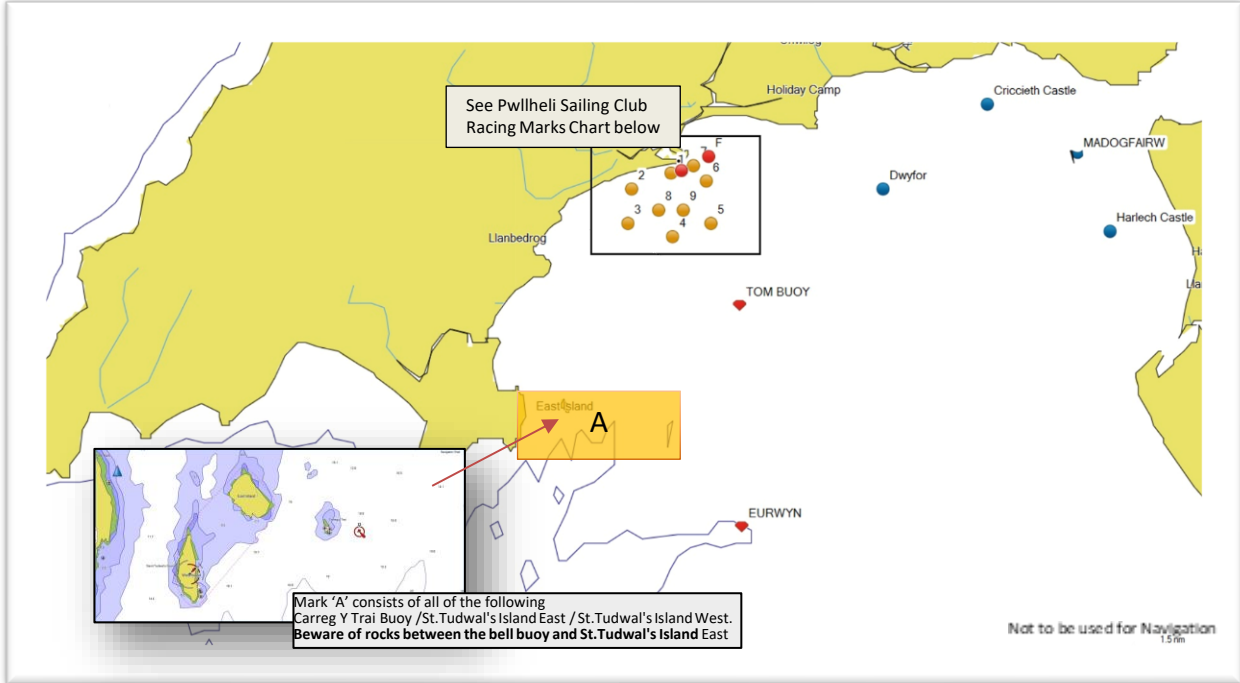
<b>TL</b>	<b>COURSE: TRIANGLE / WINDWARD - LEEWARD with reaching finish</b>
<b>Signal</b>	<b>Mark Rounding Order</b>
<b>TL2</b>	<b>Start - 1 - 2 - 3 - 1 - 1a - 3 - Finish</b>
<b>TL3</b>	<b>Start - 1 - 2 - 3 - 1 - 1a - 3 - 1 - 2 - 3 - Finish</b>
<b>TL4</b>	<b>Start - 1 - 2 - 3 - 1 - 1a - 3 - 1 - 2 - 3 - 1 - 1a - 3 - Finish</b>

**NOTE: Mark 1A May not be laid**

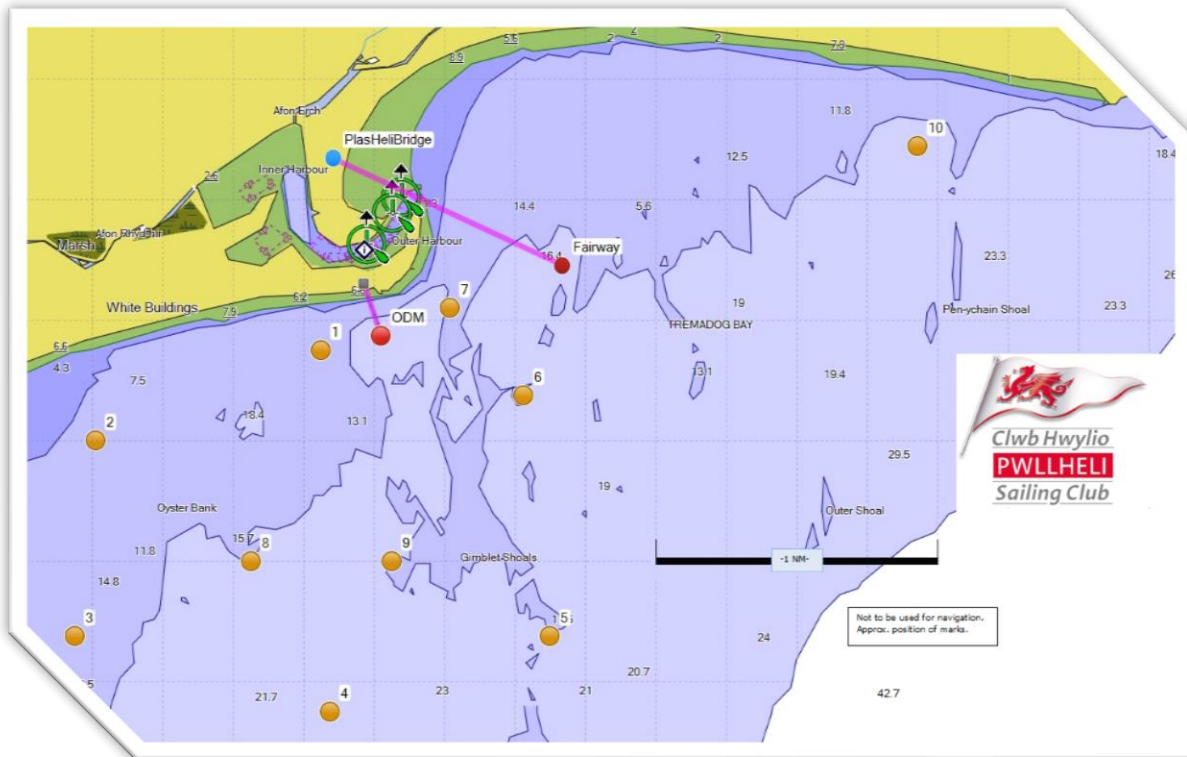


# Appendix B - Pwllheli Sailing Club Racing Marks

## Pwllheli Sailing Club Racing area



## Pwllheli SC Race Mark Location chart





## MARK POSITIONS 2023

Mark No.	Name		Latitude	Longitude	Buoy	Top Mark
<b>O</b>	Outer Distance Mark (Welsh Water)		<b>52° 52.747'N</b>	<b>04° 23.960'W</b>	Large Yellow Barrel	
<b>1</b>	West Turning Mark		<b>52° 52.700'N</b>	<b>04° 24.300'W</b>	Large Barrel	Yellow Spherical
<b>2</b>	West End - Clwb Hwyllo Pwllheli		<b>52° 52.400'N</b>	<b>04° 25.580'W</b>	Large Barrel	Yellow Spherical
<b>3</b>			<b>52° 51.750'N</b>	<b>04° 25.700'W</b>	Large Barrel	Yellow Spherical
<b>4</b>			<b>52° 51.500'N</b>	<b>04° 24.250'W</b>	Large Barrel	Yellow Spherical
<b>5</b>			<b>52° 51.750'N</b>	<b>04° 23.000'W</b>	Large Barrel	Yellow Spherical
<b>6</b>			<b>52° 52.550'N</b>	<b>04° 23.150'W</b>	Large Barrel	Yellow Spherical
<b>7</b>	East Turning Mark		<b>52° 52.840'N</b>	<b>04° 23.570'W</b>	Large Barrel	Yellow Spherical
<b>8</b>			<b>52° 52.000'N</b>	<b>04° 24.700'W</b>		
<b>9</b>			<b>52° 52.000'N</b>	<b>04° 23.900'W</b>	Large Barrel	Yellow Spherical
<b>10</b>			<b>52° 53.375'N</b>	<b>04° 20.913'W</b>	Large Barrel	Yellow Spherical
<b>F</b>	Pwllheli Fairway		<b>52° 53.000'N</b>	<b>04° 23.000'W</b>	Red & White striped	
<b>C</b>	Causeway		<b>52° 41.210'N</b>	<b>04° 25.330'W</b>	Westerly Cardinal Buoy	
<b>E</b>	Eurwyn	#1	<b>52° 47.000'N</b>	<b>04° 22.000'W</b>	Yellow Buoy	X
<b>T</b>	Tom Buoy	#2	<b>52° 50.200'N</b>	<b>04° 22.070'W</b>	Yellow Can	
<b>M</b>	Madog Fairway TBC	#3	<b>52° 52.970'N</b>	<b>04° 11.200'W</b>	Red & White striped	
<b>Y</b>	Gwylan Islands		Yachts must not pass between the two islands. (see Admiralty Chart 1971)			
<b>A</b>	Carreg Y Trai Buoy/ St.Tudwal's Island East/ St.Tudwal's Island West.				Beware rocks between the bell buoy and St.Tudwal's Island East	

## Appendix C – Fixed Courses 2023

Gwynt Wind	Rhif Course No.	Cwrs / Course	Hyd Length
N 0 349-11	1	1p 8p 4p Os 9p 7p Op	4.6
	2	1p 8p 4p Os 9p 7p 1p 8p 4p Os	7.4
	3	1p 4p 1p 4p 5p 6p 5p 6p Op 8p 4p 7p Op	10.3
NNE 22.5 12 - 33 NNE	4	7p Fp Op 4p 7p Op	4.2
	5	7p Fp 7p 4p 7p Op 9p 7p Op	5.9
	6	7p Fp 7p 4p 7p 4p 7p 9p 7p Op	8.6
	7	7p Fp 7p 4p 7p Op 8p 4p 7p Op	7.2
NE 45	8	7p Fp Op 8p Fp Op	4.2
34-56	9	7s 8p Fp Op 1p 8p Fp Op	6.4
NE	10	7p Fp Op 1p 3p Fp Op	5.4
NE	11	7p Fp Op 1p 3p 7p Op 2p 3p Os	7.8
NE	12	7p Fp Op 1p 3p 1p 3p Fp Op	8.0
NE	13		
NE	14	Fp Op 1p 3p 1p 2p 3p Fp Op 1p 3p Os	11.1
ENE 67	15	Fp Op 1p Os	1.7
57-78	16	Fp 2p Os Fp 1p Os	5.0
ENE	17	Fp 2p Os Fp 2p Os	6.9
ENE	18	Fp 2p Os Fp 2p Os Fp Op	7.9
ENE	19	Fp Op 3p 6p 3p 6p Op	8.5
ENE	20	Fp Op 3p 6p 3p 6p Op 8p 6p Op	11.0
E 90	21	Fp Op 1p 2p 6p Op	4.3
79-101	22	Fp 1p 2p 6p 2p 6p 7p Op	7.4
E	23	Fp 2p 6p 2p 6p Op 1p 2p 6p Op	10.3
ESE 112	24	Fp 1p 3p 5p 3p 5p 2s 6p Op	11.3
102-123	25	7s 6s Op 2p 5p 6p Op	5.2
ESE	26	7s 6s 2p 5p 1s Os	5.3
ESE	27	7s 6s 2p 8p 5p 8p 5p 1s Os	7.4
SE 135	28	7s 6s 1p 2p 5p 9p 5p 6p Op 1p 6p Op	7.9
124-146	29	7s 6s Op 1p 5p 6p Op	4.0
SE	30	7s 6s 1p 5p 1p 5p 6p Op	6.4
157	31	7s 6s 1p 5p 6p Op 1p 5p 6p Op	6.7
147-168	32	7s 5s 2p 4p 2p 4p 8s Os	8.2
SSE	33	1p 5p 6p Op 5p 7p Op	5.3
SSE	34	7s 5p 6p Op 5p Op 5p 6p Op	7.5
SSE	35	7s 5s 2p 4p 9p 1p 9p 6p Op	7.6
SSE	36	1p 9p 5p 7p 5p 6p Op 5p Op	7.5



Gwynt Wind	Rhif Course No.	Cwrs / Course	Hyd Length
S	37	1p 4p 6p Op 9p 7p Op	4.7
180	38	1p 4p 1p 4p 6p Op 9p 7p Op	7.1
169-191	39	1p 4p 1p 4p 5p 6p Op 4p 6p Op 9p 7p Op	10.8
S	40	1p 9p 7p Op 9p 6p Fs 5s 6p Op	6.6
SSW	41	1p 8p 7p Op 4p 9p 7p Op	5.2
202	42	1p 8p 7p Op 4p 7p 4p 6p Op	8.1
192-213	43	1p 8p 1p 8p 7p Op 4p 7p 4p 6p Op	9.6
SSW	44	1p 8p 1p 8p 4p 6p Op 4p 7p Op	7.7
SSW	45	1p 8p 4p 7p 4p 6p Op 4p 7p Op	9.0
SW	46	1p 3p 7p Op 3p 9p 7p Op	7.1
225	47	1p 3p Fp Op 3p 9p 6p Fp Op	8.5
214-236	48	1p 3p 7p Op 8p 7p Op	5.6
SW	49	1p 3p 7p Op 8p 6p Fp Op 3p 9p 7p Op	10.1
WSW	50	2p Os 7p Op 2p 9p Fp Op	6.5
247	51	2p Fp Op 2p 9p Fp Op 2p Fp Op	10.6
237-258	52	2p 9P 6P Fp Op 3p 6p Fp Op	8.2
W	53	2p 6p Op 2p 6p Op	6.1
270	54	2p 6p 2p 8p 6p Op 2p 8p 9p 6p Op	9.7
259-281	55	2p 6p 2p 8p 9p 6p Op 2p 6p Op	9.4
WNW	56	1p 6p Op 1p 6p Op	2.9
292	57	2p 8p 5p 8p 5p Op	6.0
282-303	58	2p 5p Op 2p 9p 2p 8p 6p Op	9.4
WNW	59	1p 9p 5p 2p 8p 6p Op 1p 6p Op	7.0
WNW	60	2p 8p 5p 2p 8p 6p Op 1p 6p Op	8.2
NW	61	1p 5p Op 1p 8p 5p Op	5.8
315	62	1p 5p 1p 5p Op 9p 5p Op	7.6
304-326	63	1p 9p 5p 2p 9p 2p 4p 5p Op 9p 5p Op	11.1
NW	64	1p 9p 5p 1p 9p 5p Op 8p 5p Op	8.4
NNW	65	1p 9p 5p Op 9p 5p Op	5.2
337	66	1p 9p 5p Op 8p 5p Op 5p Op	8.1
327-348	67	1p 9p 1p 9p 5p Op 8p 5p Op	7.3
NNW	68	1p 9p 1p 9p 5p Op 9p 5p Op 8p 5p Op	9.8



**Host Venue - Plas Heli – The Welsh National Sailing Academy and Events Centre**  
A Not for Profit Distributing Community Enterprise



CHPSC at Plas Heli The Welsh National Sailing Academy and Event Centre

NOTES:
