



Abu Dhabi 2020 Kitesurf Open

OPEN CHAMPIONSHIP for HYDROFOIL and TWINTIP

13 - 15 February, Abu Dhabi, United Arab Emirates

www.adsyc.ae | www.facebook.com/EmiratesKiteboardingAssociation



نادي أبوظبي للرياضات الشراعية واليخوت
Abu Dhabi Sailing & Yacht Club



2019 ABU DHABI KITESURF OPEN

LOCAL SAILING INSTRUCTIONS

These LSIs complement the NoR/SI

Issued 12 February 2020

5 SCHEDULE

- 5.6 The warning signal will be made at least 90 minutes after the departure of the shuttle boats to the launching area.
- 5.7 No warning signal will be made after 1700. On the last day of the regatta no warning signal will be made after 1600.

7 COMMUNICATION WITH COMPETITORS

- 7.5 The class flag will be green with white IKA logo

8 CHANGES TO THE NOR/SI / LSI

- 8.2 Oral instructions and changes to the LIS may be given in the launching area and on the water. The Race Committee will display flag L with one sound to alert kiteboards to come into hailing distance.

10 [DP] [NP] SAFETY REGULATIONS

- 10.1 Flag G displayed ashore with two sounds means 'No kiteboard shall go afloat until this signal is removed (with one long sound). The warning signal will be made at least 20 minutes after removal.'
- 10.2 Flag G displayed afloat means 'Kiteboards shall return ashore as soon as reasonably possible.'

12 RACING AREAS AND COURSES

12.5 Course Marks are:

Marks 1 and 4

Orange pyramid marks

Mark 5:

Yellow cylindrical mark

Mark P

Yellow cylindrical mark

Finishing marks :

RC vessel and red round mark

Starting marks

RC vessel and Mark 5

13 STARTING AND FINISHING

13.1. The starting line will be between a staff displaying an orange flag on the race committee vessel and a mark on the port-end of the starting line.

15 SCORING

15.3 Results for 'KiteFoil Men', 'KiteFoil Women' and 'Under 16s' will be calculated by simple extraction from the Overall Rankings.

15.6 To request correction of an alleged error in posted race or series results, a kiteboard may deliver a scoring enquiry through the online platform

(<https://www.racingrulesofsailing.org/documents/979/event>).

Alternatively, scoring inquiry forms are available at the race office.



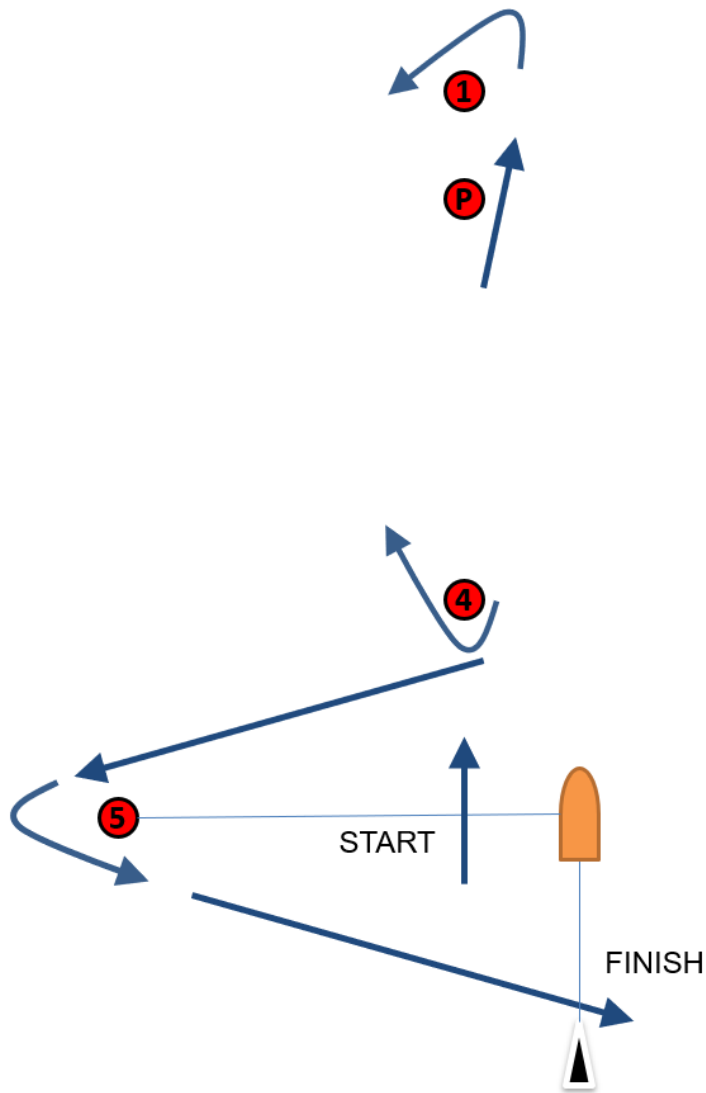
17 PROTESTS, PENALTIES AND REQUESTS FOR REDRESS

17.1 Protests and requests for redress or reopening shall be delivered to the jury office through the online platform (<https://www.racingrulesofsailing.org/documents/979/event>) within the appropriate time limit. Alternatively, protest forms are available at the race office.

17.1.1 The protest time limit is 30 minutes after return of the last shuttle boat from the launching area.



APPENDIX B – COURSE DIAGRAMS



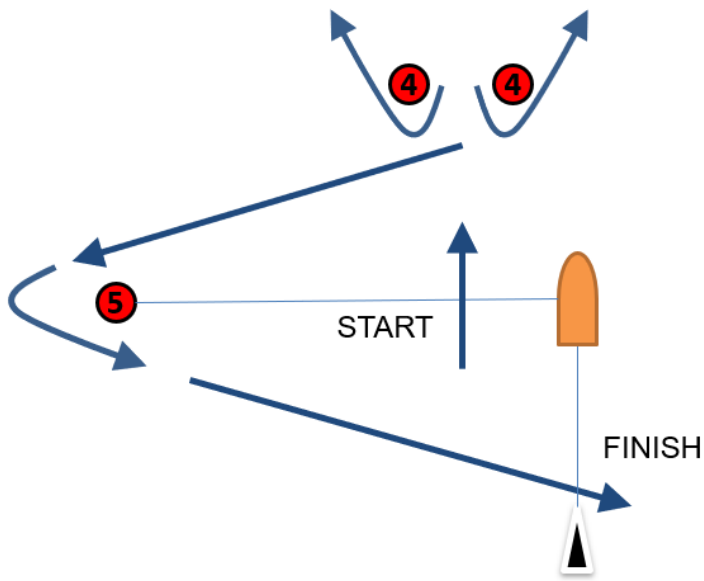
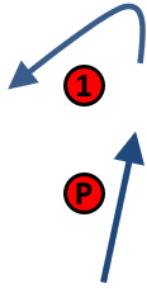
XS 1: Start – Pp – 1p – Pp – 4s – 5p – Finish

XS 2: Start – Pp – 1p – Pp – 4s – Pp – 1p – Pp – 4s – 5p – Finish

XS 3: Start – Pp – 1p – Pp – 4s – Pp – 1p – Pp – 4s – Pp – 1p – Pp – 4s – 5p – Finish

Note: Mark P shall be left to port both on upwind and downwind legs

All distances and course angles are approximate.



LS 1: Start – Pp – 1p – Pp – 4s/4p – 5p – Finish

LS 2: Start – Pp – 1p – Pp – 4s/4p – Pp – 1p – Pp – 4s/4p – 5p – Finish

LS 3: Start – Pp – 1p – Pp – 4s/4p – Pp – 1p – Pp – 4s/4p – Pp – 1p – Pp – 4s/4p – 5p – Finish

Note: Mark P shall be left to port both on upwind and downwind legs

All distances and course angles are approximate.

STANDARD PENALTIES

In accordance with the NoR/SI, the Race Committee will initially apply the following Standard Penalties:

IDENTIFICATION AND ADVERTISING	
Competitor Bib not worn as instructed	1 point scoring penalty in the race closest in time

CAMERAS AND ELECTRONIC EQUIPMENT	
Not carried as requested by the OA	1 point scoring penalty in the race closest in time

LAUNCHING AREA	
Not launching from dedicated launching area	5 points scoring penalty in the race closest in time
Keeping other equipment than kiteboards in the launching area	1 point scoring penalty in the race closest in time
Keeping equipment within 5 meters from shore.	5 points scoring penalty in the race closest in time

