



## **BELT & ROAD ROYAL LANGKAWI INTERNATIONAL REGATTA**

— 帶 — 路 皇 家 兰 卡 威 国 际 帆 船 赛

### **Attachment A - Race Schedule and Programme of Events**

---

#### **6 January 2020 (Monday)**

- |                   |   |   |
|-------------------|---|---|
| 9.00 am – 5.00 pm | - | Registration and Sail Measurement<br>at Weather Deck, RLYC        |
| 2.00 pm           | - | Practice Race (Kuah Harbour)<br><b>First Warning Signal 14.00</b> |
| 5.30 pm           | - | Skipper's Briefing at Meeting Room                                |
| 6.00 pm           | - | Media Briefing at Meeting Room                                    |
| 7.30pm            | - | Skipper's Cocktail at Main Deck, RLYC                             |

#### **7 January 2020 (Tuesday)**

- |         |   |   |
|---------|---|---|
| 9.30 am | - | Race Day 1 –All Classes<br><b>First Warning Signal 09.30*</b> |
| 7.30 pm | - | Welcome Dinner at Poolside, RLYC                              |
| 8.00 pm | - | Race Day 1 Awards Presentation                                |

#### **8 January 2020 (Wednesday)**

- |         |   |   |
|---------|---|---|
| 9.30 am | - | Race Day 2 –All Classes<br><b>First Warning Signal 09.30*</b> |
| Evening | - | Free and Easy   |

#### **9 January 2020 (Thursday)**

- |         |   |  |
|---------|---|--|
| 9.30 am | - | Race Day 3 –All Classes<br><b>First Warning Signal 09.30*</b>          |
| 4.00 pm | - | Race Day 2 and 3 Awards Presentation<br>at Charlie's Bar & Grill, RLYC |

#### **10 January 2020 (Friday)**

- |         |   |   |
|---------|---|---|
| 9.30 am | - | Race Day 4 –All Classes<br><b>First Warning Signal 09.30*</b> |
| Evening | - | Free and Easy   |

#### **11 January 2020 (Saturday)**

- |         |   |  |
|---------|---|--|
| 9.30 am | - | Belt & Road Regatta Race Day 5 - All Classes<br><b>First Warning Signal 09.30*</b> |
| 5.30 pm | - | Race Day 4 and 5 Awards Presentation<br>at Charlie's Bar & Grill, RLYC             |
| 7.30 pm | - | Closing Dinner at Poolside, RLYC   |
| 8.40 pm | - | Overall and Grand Prize Presentation Ceremony                                      |

\* If the "Around the Island" Race is announced, the start times for **Nominated Classes** will be between 0745 to 0845 hrs.



# BELT & ROAD ROYAL LANGKAWI INTERNATIONAL REGATTA

一带一路皇家兰卡威国际帆船赛

## KUAH, PULAU LANGKAWI, KEDAH DARUL AMAN

Lat 06 18.35 N Long 099 51.00 E

TIME ZONE -0800

TIMES AND HEIGHTS OF HIGH AND LOW WATERS

YEAR 2020

JANUARY		FEBRUARY		MARCH		APRIL	
Time	m	Time	m	Time	m	Time	m
1 0323	2.4	16 0347	2.6	1 0354	2.1	16 0423	2.0
0953	0.7	1025	0.5	1015	0.7	1008	0.9
W 1610	2.0	Th 1638	2.2	Sa 1641	2.0	M 1645	2.1
2143	1.1	2231	1.0	2234	1.1	2308	1.1
2 0353	2.2	17 0430	2.3	2 0426	1.9	17 0520	1.6
1026	0.8	1104	0.6	1048	0.9	1035	1.2
Th 1656	1.9	F 1731	2.1	Su 1733	1.9	M 1625	2.1
2226	1.3	2324	1.1	2336	1.2	2238	1.1
3 0430	2.0	18 0521	2.1	3 0521	1.7	18 0218	1.2
1109	1.0	1149	0.8	1140	1.0	1031	1.0
F 1759	1.9	Sa 1838	2.1	M 1855	1.8	T 1721	1.9
2336	1.4					W 1748	1.9
4 0525	1.8	19 0045	1.2	4 0153	1.3	19 0425	1.1
1212	1.1	0637	1.8	0723	1.6	1031	1.7
Sa 1922	1.9	Su 1256	1.0	T 1328	1.1	Th 1621	1.3
		2001	2.1	2039	1.9	2208	2.0
5 0144	1.4	20 0258	1.2	5 0355	1.1	20 0504	0.9
0704	1.7	0830	1.7	0931	1.6	1106	2.0
Su 1342	1.1	M 1437	1.0	W 1524	1.1	F 1705	1.1
2042	2.0	2121	2.1	2157	2.1	2254	2.2
6 0329	1.3	21 0427	1.0	6 0453	0.9	21 0534	0.7
0850	1.7	1005	1.8	1041	1.8	1135	2.2
M 1503	1.0	T 1604	1.0	Th 1633	0.9	Sa 1737	0.9
2140	2.1	2223	2.3	2252	2.3	2329	2.4
7 0427	1.0	22 0522	0.8	7 0538	0.6	22 0601	0.5
1002	1.8	1108	1.9	1131	2.0	1214	2.8
T 1602	0.9	W 1704	0.9	F 1726	0.7	Su 1806	0.8
2227	2.3	2315	2.4	2338	2.6	T 1832	0.5
8 0510	0.8	23 0606	0.6	8 0622	0.4	23 0001	2.5
1054	2.0	1156	2.1	1215	2.2	0627	0.5
W 1651	0.8	Th 1751	0.8	Sa 1813	0.6	M 1230	2.5
2309	2.5	2358	2.5			1834	0.7
9 0552	0.6	24 0643	0.4	9 0021	2.8	24 0030	2.6
1139	2.1	1235	2.2	0703	0.2	0653	0.4
Th 1736	0.7	F 1830	0.7	Su 1256	2.4	Th 1326	3.1
2351	2.7			1858	0.5	1953	0.4
10 0632	0.5	25 0037	2.6	10 0101	2.9	25 0057	2.7
1222	2.3	0718	0.4	0743	0.1	0717	0.4
F 1820	0.6	Sa 1310	2.2	M 1336	2.5	W 1321	2.6
		1906	0.6	1941	0.4	1929	0.6
11 0031	2.8	26 0110	2.7	11 0139	3.0	26 0123	2.7
0712	0.3	0748	0.3	0821	0.0	0740	0.4
Sa 1304	2.3	Su 1342	2.3	T 1414	2.6	Th 1345	2.7
1902	0.6	1936	0.6	2023	0.4	1955	0.5
12 0110	2.9	27 0142	2.7	12 0218	3.0	27 0149	2.7
0753	0.3	0815	0.3	0856	0.1	0803	0.4
Su 1344	2.4	M 1412	2.3	W 1453	2.6	F 1408	2.7
1944	0.6	2004	0.6	2101	0.5	2022	0.6
13 0150	2.9	28 0211	2.7	13 0254	2.8	28 0213	2.6
0833	0.2	0840	0.4	0928	0.2	0824	0.5
M 1425	2.4	T 1440	2.3	Th 1529	2.6	Sa 1430	2.7
2025	0.6	2030	0.7	2138	0.6	2046	0.6
14 0228	2.9	29 0238	2.6	14 0331	2.6	29 0238	2.4
0911	0.3	0903	0.4	0958	0.3	0844	0.6
T 1508	2.4	W 1508	2.3	F 1607	2.4	Su 1453	2.6
2107	0.7	2057	0.8	2213	0.8	2110	0.7
15 0308	2.8	30 0303	2.5	15 0408	2.3	30 0304	2.3
0949	0.3	0925	0.5	1025	0.6	0904	0.7
W 1551	2.3	Th 1536	2.2	Sa 1647	2.3	M 1519	2.4
2147	0.8	2124	0.9	2252	1.0	2137	0.9
		31 0327	2.3			31 0334	2.1
		0949	0.6			0926	0.9
		F 1605	2.1			T 1550	2.3
		2155	1.0			2211	1.1



# BELT & ROAD ROYAL LANGKAWI INTERNATIONAL REGATTA

一带一路皇家兰卡威国际帆船赛

## Attachment B Race Areas and Courses



**WEST COAST HARBOUR RACES**

**START AREA FOR COASTAL COURSES AND AROUND ISLAND**

If there is any discrepancy between a course diagram and the written description, then the written description shall prevail.  
The diagrams show the courses, the order in which the marks are to be passed or rounded, and the side on which each mark is to be left.

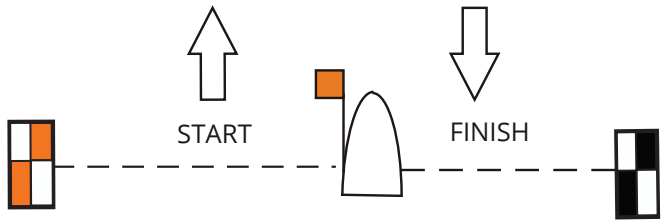
Illustrations are purely diagrammatic and should not be used for navigation.  
While every effort is made to ensure that navigation buoys are depicted in their proper places, no responsibility is taken for any errors thereon.



# BELT & ROAD ROYAL LANGKAWI INTERNATIONAL REGATTA

一带一路皇家兰卡威国际帆船赛

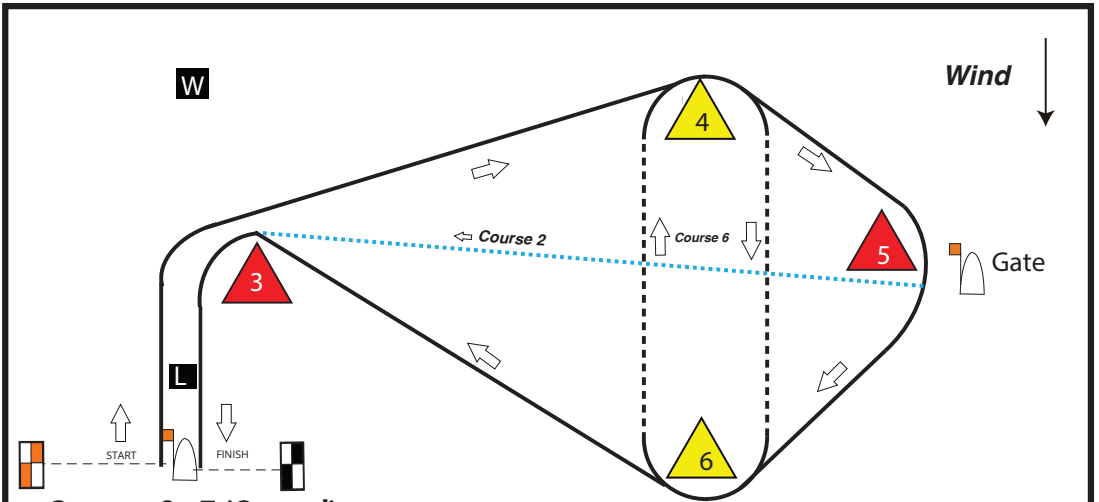
## Windward/Leeward and Coastal Courses



### Course 1

- i W, Finish
- ii W,L,W, Finish
- iii W,L,W,L,W,Finish
- iv W,S, Finish
- v W,S,L,W,S, Finish
- vi W,S,L,W,S,L,W,S,Finish
- vii 1, Finish
- viii 1,L,1, Finish
- ix 1,L,1,L,1,Finsh

All Marks Rounded to Port.



### Courses 2 - 7 (Coastal)

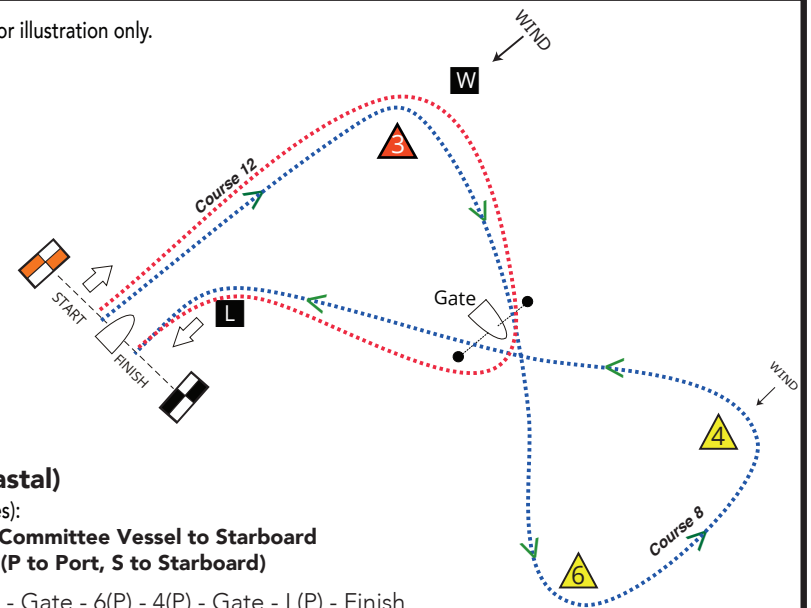
Direction of Marks (all courses):

Pass through Gate with Committee Vessel to Starboard  
Pass Marks as indicated (P to Port, S to Starboard)

- Course 2: Start - 3(S) - 4(S) - 5(Gate) - 3(P) - Finish
- Course 3: Start - 3(S) - 4(S) - 3(P) - Finish
- Course 4: Start - 3(S) - 4(S) - 6(S) - 3(P) - Finish
- Course 5: Start - 3(S) - 4(S) - 5(Gate) - 6(S) - 3(P) - Finish
- Course 6: Start - 3(S) - 4(S) - 5(Gate) - 6(S) - 4(S) - 6(S) - 3(P) - Finish
- Course 7: Start - 3(S) - 5(S) - Finish



Courses 8 and 12 are shown for illustration only.



### Courses 8 - 12 (Coastal)

Direction of Marks (all courses):

Pass through Gate with Committee Vessel to Starboard  
Pass Marks as indicated (P to Port, S to Starboard)

- Course 8: Start - 3(S) - Gate - 6(P) - 4(P) - Gate - L(P) - Finish
- Course 9: Start - 3(S) - Gate - 6(P) - 4(P) - 6(P) - 4(P) - Gate - L(P) - Finish
- Course 10: Start - 3(S) - Gate - 6(P) - Gate - L(P) - Finish
- Course 11: Start - 3(S) - Gate - 6(P) - 4(P) - Gate - 3(P) - Finish
- Course 12: Start - 3(S) - Gate and Round Committee Vessel to Starboard - L(P) - Finish

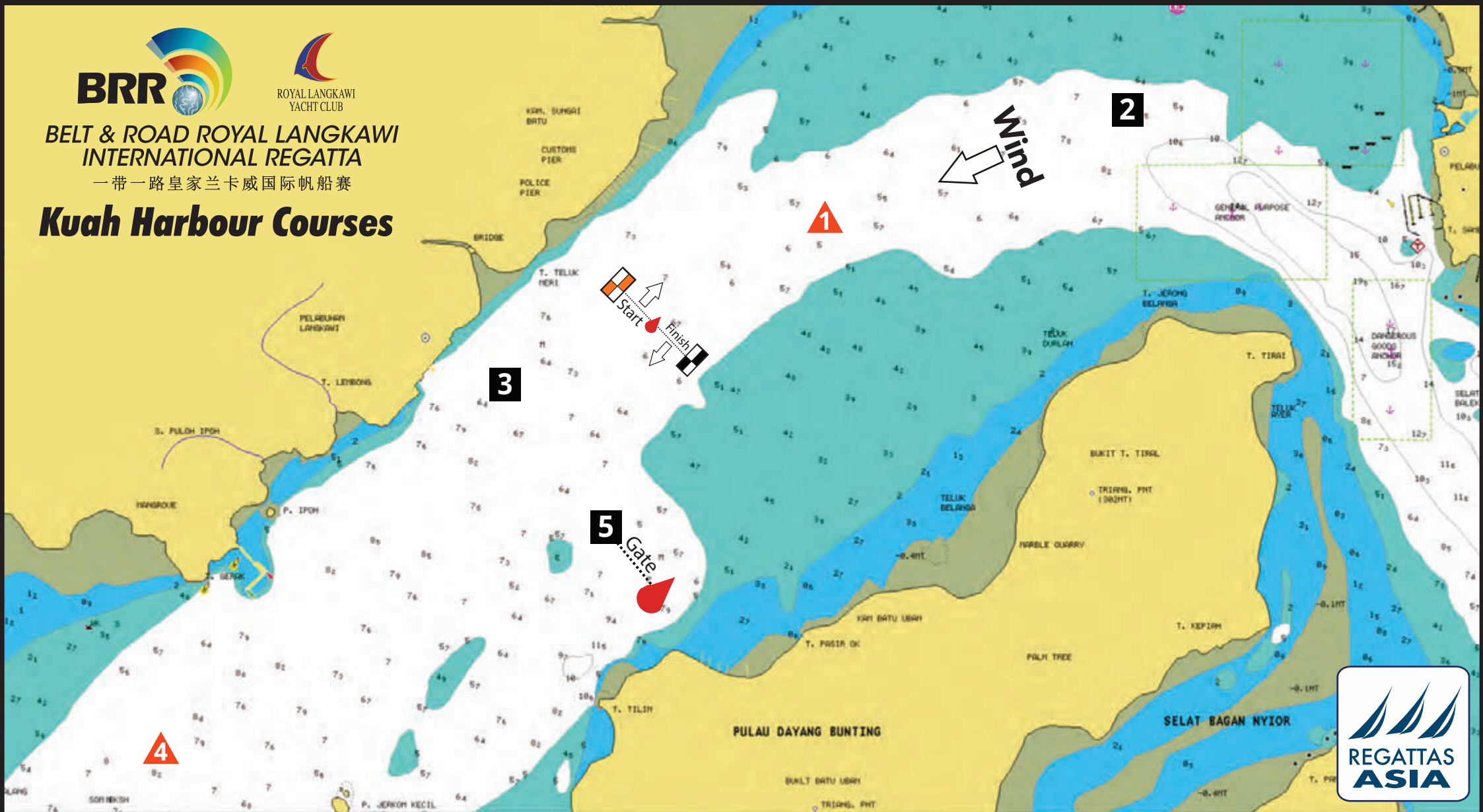




# BELT & ROAD ROYAL LANGKAWI INTERNATIONAL REGATTA

一带一路皇家兰卡威国际帆船赛

## Kuah Harbour Courses



### Course 14

Start, 1-p, 4-p, 3-p, 4-p, 5-g, 1-p, Finish

### Course 15

Start, 1-p, 4-p, 5-g, 1-p, Finish

### Course 16

Start, 4-p, 5-g, 1-p, Finish

### Course 17

Start, 1-p, 4-g, 5-g, 2-p, Finish

### Course 18

Start, 1-p, 3-p, 5-g, 1-p, Finish

### Course 19

Start, 2-p, 4-p, 3-p, 4-p, 2-p, Finish

### Course 20

Start, 2-p, 4-p, 2-p, Finish

Note: Position of start, mark boat and mark buoys are in estimated positions for illustration only.

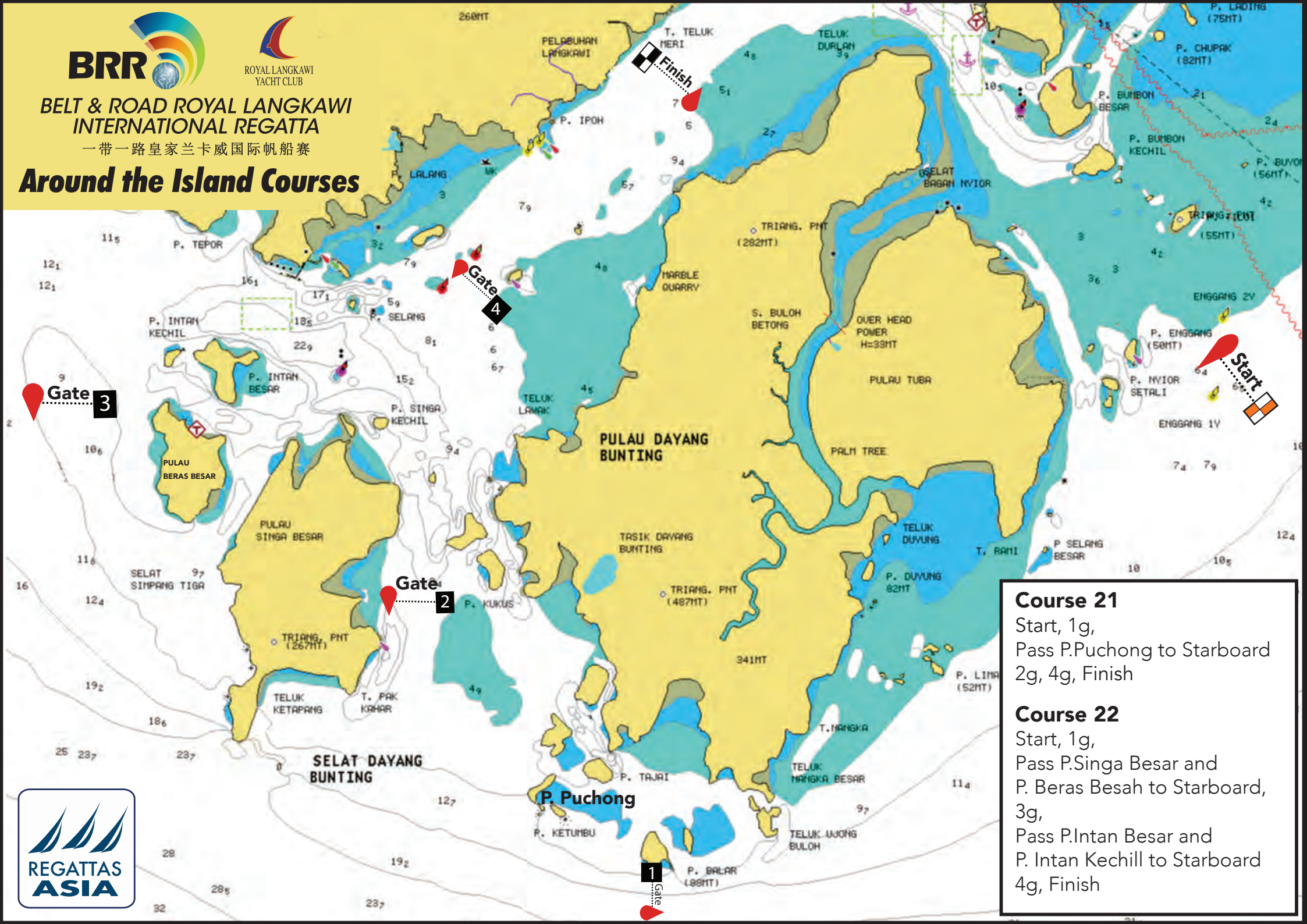




**BELT & ROAD ROYAL LANGKAWI  
INTERNATIONAL REGATTA**

一带一路皇家兰卡威国际帆船赛

**Around the Island Courses**



**Course 21**  
 Start, 1g,  
 Pass P.Puchong to Starboard  
 2g, 4g, Finish

**Course 22**  
 Start, 1g,  
 Pass P.Singa Besar and  
 P. Beras Besah to Starboard,  
 3g,  
 Pass P.Intan Besar and  
 P. Intan Kechill to Starboard  
 4g, Finish

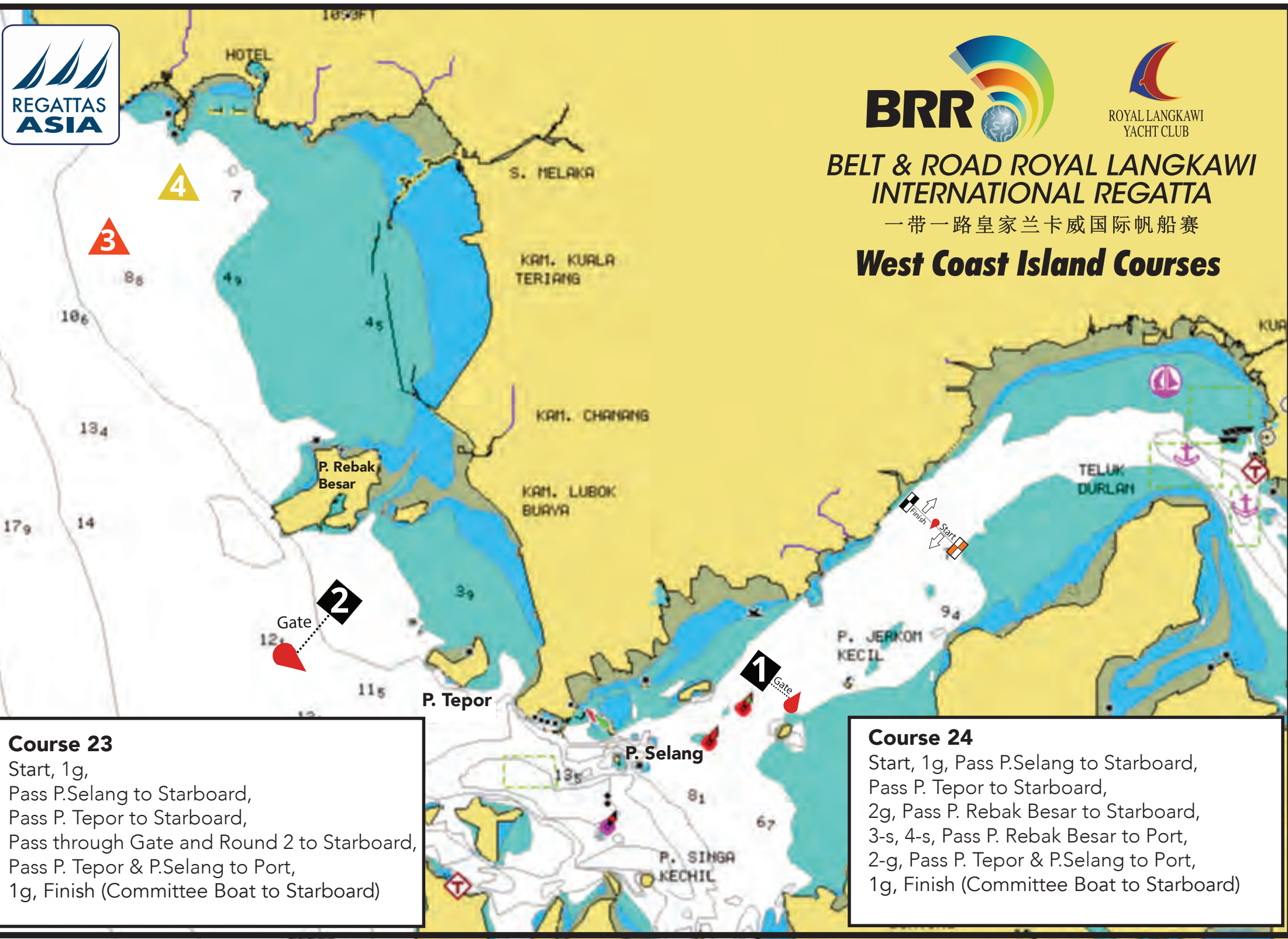




# BELT & ROAD ROYAL LANGKAWI INTERNATIONAL REGATTA

一带一路皇家兰卡威国际帆船赛

## West Coast Island Courses



### Course 23

Start, 1g,  
Pass P.Selang to Starboard,  
Pass P. Tepor to Starboard,  
Pass through Gate and Round 2 to Starboard,  
Pass P. Tepor & P.Selang to Port,  
1g, Finish (Committee Boat to Starboard)

### Course 24

Start, 1g, Pass P.Selang to Starboard,  
Pass P. Tepor to Starboard,  
2g, Pass P. Rebak Besar to Starboard,  
3-s, 4-s, Pass P. Rebak Besar to Port,  
2-g, Pass P. Tepor & P.Selang to Port,  
1g, Finish (Committee Boat to Starboard)



# BELT & ROAD ROYAL LANGKAWI INTERNATIONAL REGATTA

一带一路皇家兰卡威国际帆船赛

## West Coast Island Course



**Course 25**

Start,  
 Through Gate 1,  
 Pass P.Singa Kechil to Starboard  
 Round P.Singa Besar to Starboard  
 Pass P. Beras Besar to Starboard  
 Round P. Intan Kechin to Starboard  
 Pass P. Intan Besar to Starboard  
 Pass P. Selang to Port  
 Through Gate 1  
 Finish







# BELT & ROAD ROYAL LANGKAWI INTERNATIONAL REGATTA

一带一路皇家兰卡威国际帆船赛

## West Coast Island Courses

### Course 26 (Illustrated)

Start, 1(Gate),  
Round P. Singha Kechil to Starboard,  
Pass P. Intan Besar to Startboard ,  
Round P. Intan Kechil to Starboard,  
Pass P. Selang to Port,  
1(Gate), Finish (Committee Boat to Starboard)

### Course 27 (Not Illustrated)

Start, 1(Gate),  
Round P. Jong to Starboard  
Round P. Singha Kechil to Starboard,  
Pass P. Selang to Port,  
1(Gate), Finish (Committee Boat to Starboard)

### Island Co-ordinates

P. Singa Kechil	N06' 13.90'	E99'44.90'
P. Jong	N06' 13.40'	E99'42.40'
P. Intan Besar	N06' 13.93'	E99'43.60'
P. Intan Kechil	N06' 14.60'	E99'42.80'
P. Selang (Reef)	N06' 14.90'	E99'44.90'





## BELT & ROAD ROYAL LANGKAWI INTERNATIONAL REGATTA

一带一路皇家兰卡威国际帆船赛

06-11 JANUARY 2020

### ATTACHMENT C – GPS Location of Marks and Islands

---

#### Courses 21 and 22

Depending on sea and wind conditions, the Start Vessel, Marks and Gates will be in the approximate vicinity of:

Start Boat	-	N06°14.7' - E99°53.4'
Gate 1	-	N06°09.1' - E99°47.9'
Gate 2	-	N06°12.0' - E99°45.2'
Gate 3	-	N06°14.5' - E99°42.5'
Gate 4	-	N06°15.3' - E99°45.9'
Finish Boat	-	In a North East direction from Gate 4.

---

#### Courses 23 and 24

Depending on sea and wind conditions, the Start Vessel, Marks and Gates will be in the approximate vicinity of:

Start/ Finish	-	N06°17.85' - E99°48.65'
Gate 1	-	N06°15.56' - E99°46.12'
Gate 2	-	N06°16.80' - E99°41.40'
Mark 3	-	N06°20.05' - E99°38.80'
Mark 4	-	2 Nm upwind from Mark 3

If Mark 3 and 4 are used, Gate 2 will maintain position.

If a race committee vessel at 2-g displays flags black over red, DELETE marks 3 and 4 from Course Description, ROUND MARK 2 to STARBOARD and continue with course.

---

#### Island Co-ordinates

P. Singa Kechil	N06' 13.90'	E99'44.90'
P. Jong	N06' 13.40'	E99'42.40'
P. Intan Besar	N06' 13.93'	E99'43.60'
P. Intan Kechil	N06' 14.60'	E99'42.80'
P. Selang (Reef)	N06' 14.90'	E99'44.90'

*The GPS details included in the course descriptions are provided using the **WGS84** datum.*

*These details are approximate and no request for redress will be considered for a minor deviation of position. This changes RRS 62.1.*