



# SAILING INSTRUCTIONS

2022 Division II Open Dutch Championships

3<sup>rd</sup> an 4<sup>th</sup> September

[DP] denotes a rule for which the penalty for a breach is at the discretion of the protest committee and may be less than disqualification.

[NP] denotes that a breach of this rule will not be grounds for a protest by a board. **This changes WCR 60.1(a).**

## 1. RULES

1.1. The race will be governed by the rules as defined in [Racing Rules of Sailing-Windsurfing Edition](#) (WCR).

1.2. No national authority prescription will apply.

1.3. ID2CA Class Championship & Racing Rules shall apply.

1.4. ID2CA Championship and Racing Rules Paragraph 7 is changed with Amendment A of these Sl's.

1.5. Appendix T (Arbitration) of WCR will apply.

1.6. If there is a conflict between these Sailing Instructions and any other document governing the event, the Sailing Instructions will take precedence. **This changes WCR 63.7.**

## 2. NOTICES TO COMPETITORS

Notices to competitors will be posted on the official [Online Notice Board](#).

## 3. CHANGES TO SAILING INSTRUCTIONS

Any change to the sailing instructions will be posted not less than 60 minutes before the scheduled starting signal of any race on the day it will take effect, except that any change to the schedule of races will be posted by 20:00 on the day before it will take effect.

## 4. SIGNALS MADE ASHORE

4.1. Signals made ashore will be displayed on the flag pole located at the clubhouse of WSH.

4.2. When flag AP is displayed ashore, '1 minute' is replaced with 'not less than 30 minutes'. **This changes WCR Race Signals.**

## 5. SCHEDULE OF RACES

5.1. The schedule is as follows:

Date	Number of races	Warning signal time 1 <sup>st</sup> race of the day	
		Class C	Class A
Saturday Sept 3	4	11:00	ASAP after Class C
Sunday Sept 4	4	11:00	ASAP after Class C

5.2. There shall be a maximum 4 races per day, in a maximum 8 race series.

5.3. The scheduled time of the warning signal for the first race each day is at 11:00.

5.4. To alert boats that a race will begin soon, the orange starting line flag will be displayed with one sound at least five minutes before a warning signal is made.

5.5. Standard racing signals "AP over H" and/or "AP over A" will be used to inform competitors when a break will be held or when racing is postponed.

5.6 On the last scheduled day of racing no warning signal will be made after 16:00.



## 6. CLASS FLAG

6.1. Class flag will be flag 'W'.

6.2. The starting class will be shown on the Committee Signal Boat showing a black sign with yellow number corresponding with class 'A' or class 'C' at the start of the race, before the warning signal.

## 7. RACING AREAS

Attachment A shows the location of the regatta harbour and racing areas.

## 8. THE COURSES

8.1. The diagrams in Attachment B show the courses, including the approximate angles between legs, the order in which marks are to be passed, and the side on which each mark is to be left.

8.2. No later than the warning signal, the race committee signal vessel will display the course to be sailed.

## 9. MARKS

9.1. Marks 1, 2 and 3 will be yellow inflatable buoys.

9.2. The starting marks will be the race committee signal vessel at the starboard end and a yellow spar buoy at the port end.

9.4. The finishing marks will be the race committee signal vessel at the port end and a yellow spar buoy at the starboard end.

9.5. A race committee vessel signalling a change of a leg of the course is a mark as provided in instruction 11.2.

## 10. THE START

10.1. The starting line will be between the flag line of the orange flag on the starboard-end starting mark and the course side of the port-end starting mark.

10.2. A board starting later than 4 minutes after her starting signal will be scored Did Not Start (DNS) without a hearing. This changes WCR A4 and A5.

## 11. CHANGE OF THE NEXT LEG OF THE COURSE

11.1. To change the next leg of the course, the race committee will move the original mark (or the finishing line) to a new position. No signals will be given. This changes **WCR 33**.

## 12. THE FINISH

12.1 The finishing line will be between the flag line of the blue flag on the port-end starting mark and the course side of the starboard-end starting mark.

## 13. PENALTY SYSTEM

Appendix P (Special Procedures for Rule B4.42) will apply. – See Amendment B of these Sis.

## 14. TIME LIMITS AND TARGET TIMES

14.1. Time limits and target times are as follows:

Time limit for first finisher is 45 minutes;

Time Limit for first board to reach the first mark is 15 minutes;

Target time for a race is 25-30 minutes.

14.2. If no boat has passed Mark 1 within the Mark 1 time limit, the race will be abandoned. Failure to meet the target time will not be grounds for redress. **[NP]**



14.3. Boards failing to finish within 20 minutes after the first board sailed the course and finishes, will be scored Did Not Finish without a hearing. **This changes WCR 35, A4 and A5.**

## **15. PROTESTS AND REQUESTS FOR REDRESS**

15.1. Protest forms are available at the Race Office situated at the regatta center and on the official [Online Notice Board](#). Protests and requests for redress or reopening shall be delivered there within the appropriate time limit.

15.2. Arbitration – see RRS Appendix T – will be offered.

15.3. Special attention will be for WCR 61.1 (a). »... She shall inform the Race Committee of her intention to protest as soon as practicable after she finishes or retires.

15.4. The protest time limit is 60 minutes after the last board has finished the last race of the day or the race committee signals no more racing today on the water, whichever is later or 30 minutes after race committee signals no more racing today ashore.

15.5. Boards taking a voluntary penalty shall complete the Penalty Acknowledgment Form at the Race Office before the end of the protest time limit. **[DP] [NP]**

15.6. A list of boats that under instruction 13 have been penalized for breaking rule 42 will be posted after racing each day, (see amendments A and B).

15.7. Notices will be posted no later than 30 minutes after the protest time limit to inform competitors of hearings in which they are parties or named as witnesses. Hearings will be held in the race office, beginning at the time posted on the notice board.

15.8. Notices of protests by the race committee or protest committee will be posted to inform boats under WCR 61.1(b).

## **16. SCORING**

16.1. Three (3) races are required to be completed to constitute a series.

16.2. (a) When fewer than four (4) races have been completed, a board's series score will be the total of her race scores.

16.2. (b) When five (5) or more races have been completed, a board's series score will be the total of her race scores excluding her worst score.

16.3. To request correction of an alleged error in the posted races or series results, a board shall complete a Scoring Enquiry Form available at the Race Office.

## **17. SAFETY REGULATION [DP]**

A boat that retires from a race shall notify the race committee as soon as possible.

## **18. REPLACEMENT OF CREW OR EQUIPMENT [DP]**

Substitution of damaged or lost equipment will not be allowed unless authorized by the Technical Committee. Requests shall be made at the first reasonable opportunity.

## **19. EQUIPMENT AND MEASUREMENT CHECKS [DP]**

A board or equipment may be inspected at any time for compliance with the class rules.

## **20. OFFICIAL VESSELS [NP]**

Official vessels will be marked as follows:

Race committee vessels:	White flag with RC
RESCUE vessels:	Orange flag with RESCUE



Race committee signal vessel: WSH club flag

**21. SUPPORT BOATS [DP] [NP]**

Team leaders, coaches and other support personnel shall stay outside areas where boats are racing from the time of the preparatory signal until all boats have finished or retired or the race committee signals a postponement, general recall or abandonment.

**22. PRIZES**

See the Notice of Race.

**23. DISCLAIMER OF LIABILITY [NP]**

Competitors participate in the regatta entirely at their own risk. See WCR 3, Decision to Race. The Organizing Authority will not accept any liability for material damage or personal injury or death sustained in conjunction with or prior to, during, or after the regatta.

**24. INSURANCE [NP]**

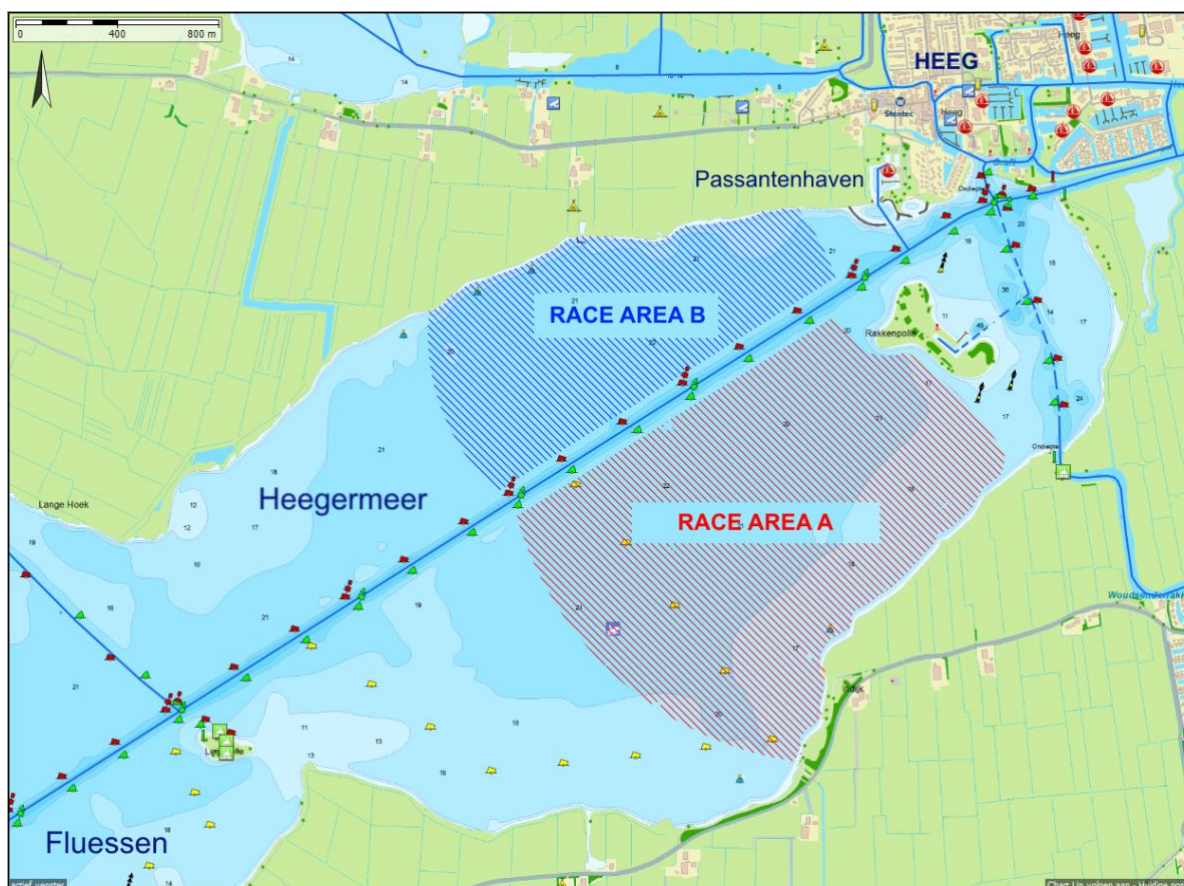
Each participating boat shall be insured with valid third-party liability insurance with a minimum cover of 1.000.000,00 EUR per event or the equivalent. Proof of insurance shall be provided upon registration.

## Attachment A: LOCATION OF THE RACING AREA

Under normal circumstances races will be held in race area A. The principal race officer can decide to move the races to area B, regarding conditions of weather and safety.

### A. RACE AREAS

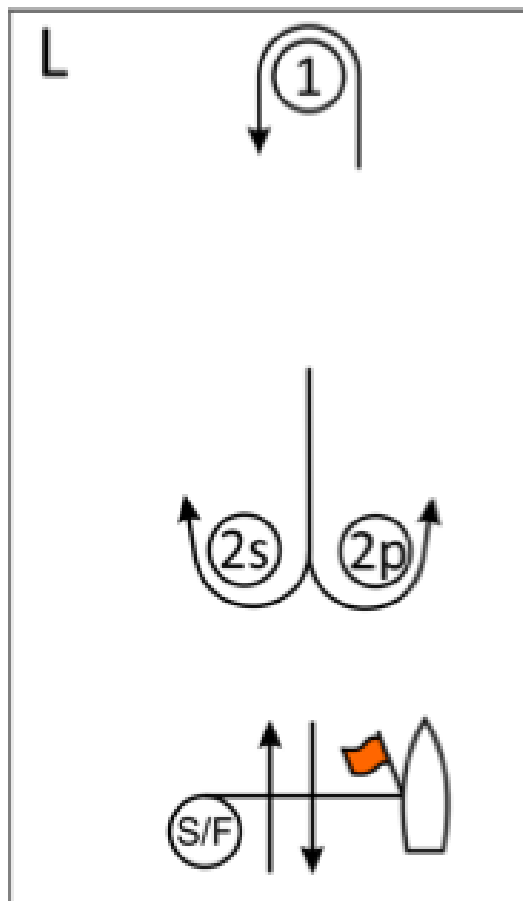
- A.1. Main race area A is located SE of the buoyed channel in the Heegermeer as indicated in the map below. Race area A is the principle race area.
- A.2. Secondary race area B is located NW of the buoyed channel in the Heegermeer as indicated in the map below.
- A.3. Competitors should not enter the buoyed channel during racing. The buoyed channel, the area designated by the line formed by the bouys at either side of the channel, is to be regarded as an obstruction as in the definitions of the WCR.



- \* The buoyed channel across the Heegermeer, named 'Johan Frisokanaal', is to be avoided during racing. Boats may not sail inside or cross this channel during the race. The channel is classed as a continuing obstruction according to the definitions in the RRS.

**Attachment B: THE COURSE (WINDWARD/LEEWARD, LEEWARD FINISH)**

This diagram shows the courses, the order in which marks are to be passed, and the side on which each mark is to be left:



Course L – Windward/Leeward, Leeward Finish	
<i>Signal</i>	<i>Mark Rounding Order</i>
L2 (*)	Start – 1 – 2s/2p – 1 – Finish
L3 (*)	Start – 1 – 2s/2p – 1 – 2s/2p – 1 – Finish
L4 (*)	Start – 1 – 2s/2p – 1 – 2s/2p – 1 – 2s/2p – 1 – Finish

(\*) The mark rounding order will be shown on the Committee Signal Boat showing a white sign with red number 1, 2 or 3 at the start of the race, before the warning signal.



## AMENDMENT A

Delete from **ID2CA Championship and Racing Rules** paragraph **7** and replace it with new paragraph **7** “**Rule B4.42 is deleted and replaced by:**”

### **B4.42 PROPULSION**

#### **B4.42.1 Basic Rule**

Except when permitted in rule B4.42.3, a board shall compete by using only the wind and water to increase, maintain or decrease her speed. Her crew may adjust the trim of sails and hull, and perform other acts of seamanship, but shall not otherwise move their bodies to propel the board.

#### **B4.42.2 Prohibited Actions**

Without limiting the application of rule B4.42.1, these actions are prohibited:

- (a) **pumping**: repeated fanning of sail either by pulling in and releasing the sail or by vertical or athwartship body movement;
- (b) **rocking**: repeated rolling of the board, induced by
  - (1) body movement,
  - (2) repeated adjustment of the sails or centreboard,
- (c) **ooching**: sudden forward body movement, stopped abruptly;
- (d) **repeated tacks or gybes** unrelated to changes in the wind or to tactical considerations.

#### **B4.42.3 Exceptions**

- (a) A board may be rolled to facilitate steering.
- (b) A board’s crew may move their bodies to exaggerate the rolling that facilitates steering the boat through a tack or a gybe, provided that, just after the tack or gybe is completed, the board’s speed is not greater than it would have been in the absence of the tack or gybe.
- (c) When a board is above a close-hauled course and either stationary or moving slowly, she may pump to turn to a close-hauled course.
- (d) If a batten is inverted, the board’s crew may pump the sail until the batten is no longer inverted. This action is not permitted if it clearly propels the board.
- (e) Any means of propulsion may be used to help a person or another vessel in danger.
- (f) To get clear after grounding or colliding with a vessel or object, a board may use force applied by her crew or the crew of the other vessel and any equipment.
- (g) Pumping, rocking and ooching are permitted:
  - (1) before the 1 minute signal
  - (2) during the 1st minute after the starting signal
  - (3) after the 1st minute after the starting signal, only if the boat’s proper course is not on the beat to windward.

**AMENDMENT B**

*This amendment only applies for ID2 Class and only if ID2 class rules change of Racing Rule B4.42 applies.*

**APPENDIX P of the RRS - SPECIAL PROCEDURES FOR RULE B4.42 is changed by deletion and replacement with following:**

**P1 OBSERVERS AND PROCEDURE**

**P1.1** The protest committee may appoint observers, including protest committee members, to act in accordance with rule P1.2. A person with a significant *conflict of interest* shall not be appointed as an observer.

**P1.2** An observer appointed under rule P1.1 who sees a board breaking rule B4.42 may penalize her by, as soon as reasonably possible, making a sound signal, pointing a yellow flag at her and hailing her sail number, even if she is no longer *racing*. A board so penalized shall not be penalized a second time under rule B4.42 for the same incident.

**P2 PENALTIES****P2.1 First Penalty**

When a board is first penalized under rule P1.2 her penalty shall be a 360°–Turn penalty under rule B.4.44.2. If she fails to take it she shall be disqualified without a hearing.

**P2.2 Second Penalty**

When a board is penalized a second or subsequent time during the regatta, she shall promptly retire. If she fails to do so she shall be disqualified without a hearing and her score shall not be excluded.

**P2.3 Penalties Near the Finishing Line**

If a board is penalized under rule P2.2 and it was not reasonably possible for her to retire before *finishing*, she shall be scored as if she had retired promptly.

**P3 POSTPONEMENT, GENERAL RECALL OR ABANDONMENT**

If a board has been penalized under rule P1.2 and the race committee signals a *postponement*, *general recall* or *abandonment*, the penalty is cancelled.

**P4 REDRESS LIMITATION**

A board shall not be given redress for an action by a member of the protest committee or its designated observer under rule P1.2 unless the action was improper due to a failure to take into account a race committee signal or a class rule