



NOTICE OF RACE
and
SAILING INSTRUCTIONS

**Haitong International
2022 Victoria Harbour Windsurfing Race**

11 December 2022

**East Coast Park Precinct (Phase 1),
Hong Kong**

Last update: 30 Nov 2022

[DP] denotes a rule for which the penalty is applied according to the RRS Introduction - Notation.

[NP] denotes that a breach of this rule will not be grounds for a protest or request for redress by a board.

This changes RRS 60.1(a) and 60.1(b).

[SP] denotes a rule for which a standard penalty may be applied by the race committee without a hearing.

This changes RRS 63.1 and RRS A5.1

1. Rules

- 1.1. Hong Kong Sailing Federation Prescriptions will apply.
- 1.2. For classes under Windsurfing:
 - 1.2.1. The event will be governed by the rules as defined in The Racing Rules of Sailing (RRS) by World Sailing.
 - 1.2.2. RRS Appendix T - Arbitration - will apply.
 - 1.2.3. The Class Rules of the participating class will apply:
 - 1.2.3.1. International iQFOiL Class Rules for Men Division and Women Division of iQFOiL Class; and
 - 1.2.3.2. International iQFOiL Youth & Junior Class Rules for Youth Division and Junior Division.
 - 1.2.4. World Sailing Addendum Q - Umpired Fleet Racing, will apply and take precedence over any conflicting instructions.
 - 1.2.5. On the water judging will be implemented with the following changes to the RRS.
 - 1.2.5.1. No proceedings of any kind may be taken in relation to any action or non-action by an on the water judge.
 - 1.2.5.2. Add new rule - RRS 61.1(a)(5) If an on the water judge is close to the incident a protesting board may make a loud hail of 'protest'. If the on the water judge responds by displaying a green or red flag or light, the hail will have satisfied the requirement for the protesting board to inform the race committee after she finishes or retires. If there is no green or red response from the judge, the board shall inform the race committee as above.
 - 1.2.5.3. Add new paragraph - RRS 63.6 A green or red response by an on the water judge to a hail of protest will indicate that the judge has seen the incident, and there is no need for oral evidence to be presented following the race.
 - 1.2.5.4. Add new rule - RRS 64.1(d) An on the water decision will be made by a majority of the judges on the observing judge boat. In the event of no majority, the decision will be a green flag or light.
 - 1.2.5.5. Add new rule - RRS 64.2(c) When the on the water judge(s) are satisfied that they have observed the incident properly they shall signal either:
 - 1.2.5.5.1. Green (flag or light) meaning no rule broken or the judge(s) have seen the infringing board has taken a proper one turn penalty.

- 1.2.5.5.2. Red (flag or light) meaning a board has broken a rule. If the infringing board has had an opportunity to take a voluntary one turn penalty after the hail, and has failed to do so, the penalty will be two turns.
- 1.2.5.6. Add new rule - RRS 64.2(d) When an oral hearing is held after the race has finished, and the judges have decided that a board has broken a rule, the penalty imposed will be at the discretion of the judges, but will not be less than two places.
- 1.3. For classes under Wingfoil:
 - 1.3.1. The competition is sanctioned by GWA and the competition will be governed by the rules given in the GWA Wingfoil World Tour Regulations – Rulebook 2022.
- 1.4. If there is a conflict between languages, the English text will take precedence.
- 1.5. If there is a conflict between the Notice of Race, Sailing Instructions and any other document governing the event, the Sailing Instructions will take precedence. This changes RRS 63.7.

2. ADVERTISING & SAIL INSIGNIAS & NATIONAL FLAGS

- 2.1. Boards may be required to display advertising chosen and supplied by the Organizing Authority. World Sailing Regulation 20 ‘Advertising Code’ shall apply
- 2.2. For foil’s sail, the event sponsor’s branding shall be placed immediately below batten #5 and as close to the leech as possible but without overlapping the sail corner reinforcement. Competitors shall not cut or adapt the stickers in any way.
- 2.3. Competitors shall provide their own self-adhesive National Flags on the sail and any replacements.

3. ADDITIONAL IDENTIFICATION

- 3.1. Event stickers may be provided by the organizer
- 3.2. For Windsurfing classes, stickers shall be placed on sail at the area between sail numbers and boom, and close to the leech as possible, at all times.
- 3.3. Luminous stickers may be provided by the organizer and shall be placed on board, at all times.
- 3.4. Event stickers shall not be cut, trimmed, defaced or altered in any way.
- 3.5. Competitors shall use the equipment as instructed by the organizer, at all times.

4. CLASSES AND DIVISIONS

- 4.1. The participating classes and divisions for Windsurfing are as follow:

Class	Division
iQFOiL	Men
	Women
	Youth
	Junior

FOIL	Minim
------	-------

4.2. The participating categories and divisions for Wingfoil are as follow:

4.2.1. Open Category Discipline Surf-Slalom

5. ELIGIBILITY AND ENTRY REGULATIONS

5.1. Victoria Harbour Windsurfing Race shall be opened to competitors who are being invited. The invitation will be posted on the Official Notice Board no later than 1800 on the 10th of December.

6. FEES

6.1. No fee is required for this event.

7. CAMERAS AND ELECTRONIC EQUIPMENT

7.1. Each competitor might be asked to carry a video recording device on their helmet requested by the Organizing Authority. Competitors shall handle such devices with proper care and seamanship, without interfering with its functionality.

8. NOTICES TO COMPETITORS

8.1. Notices to competitors will be posted on the Official Notice Board and its location is stated at NoR & SI Appendix

9. CHANGES TO NOTICE OF RACE & SAILING INSTRUCTIONS

9.1. Any change to the NoR & SIs will be posted not less than 60 minutes before the scheduled attention signal of the race in which it takes effect.

10. SIGNALS MADE ASHORE & AFLOAT

10.1. Signals made ashore will be displayed at the Official Flag Pole and its location is stated in the NoR & SI Appendix.

10.2. [DP] [NP] When flag AP is displayed ashore, competitors shall not go afloat. '1 minute' is replaced with 'not less than 30 minutes'. This changes RRS Race Signals.

11. EQUIPMENT REGISTRATION AND INSPECTION

11.1. Equipment may be inspected at any time during the event for compliance with the class rules and the NoR & SIs according to the following procedures: A competitor may be instructed by the technical committee, either ashore or on the water, to proceed immediately to the Inspection Area for inspection.

11.2. Until permission is given by the technical committee, a competitor once instructed to proceed for inspection, shall have no unauthorized contact with any support personnel, no person shall join or leave the board, no equipment or other item shall be taken on or off that board and the board shall not leave the Inspection Area.

12. REPLACEMENT OF EQUIPMENT

12.1. Substitution of damaged or lost equipment will not be allowed unless authorized by the technical committee.

- 12.2. Replacement ashore: Requests for substitution of damaged or lost equipment shall be submitted for technical committee's consideration. Any request shall be made at the first reasonable opportunity.
- 12.3. Replacement afloat: When an item of equipment is damaged or lost shortly before a race and is replaced, the competitor shall notify the technical committee or race committee before the attention signal. As soon as practicable after coming ashore and within the protest time limit, the competitor shall comply with NoR & SI 12.2 and the replaced item shall be presented to the technical committee.

13. FORMAT OF RACING

- 13.1. The event will consist of Slalom and Freestyle Performance for both Windsurfing and Wingfoil.
- 13.2. For Slalom:
 - 13.2.1. All divisions shall start separately and the corresponding schedule is listed in the Schedule section of the NoR & SI.
 - 13.2.2. For Windsurfing:
 - 13.2.2.1. Except for iQFOiL Men and Women division, there shall be one race (Final) for each division.
 - 13.2.2.2. For iQFOiL Men and Women:
 - 13.2.2.2.1. There shall be a Semi-Final race and a Final race.
 - 13.2.2.2.2. Top half competitors from each division will enter the final race.
 - 13.2.2.2.3. If there is an odd number of competitors in the Semi-Final race, the entry number for the Final race will be rounded up to the nearest whole number. For example, if there are 7 competitors in the Semi-Final race, the top 4 will enter the Final race.
 - 13.2.3. For Wingfoil:
 - 13.2.3.1. There shall be only one race (Final) in total.

14. SCHEDULE

- 14.1. All programs shall be hosted at East Coast Park Precinct (Phase 1), and the race schedule shall be:

Time	Program
10:30	Registration
11:30	Skipper Meeting
12:30 - 12:40	Foil Minim (Final)
12:45 - 12:55	Wingfoil Slalom (Final)
13:00 - 13:10	iQFOiL Junior (Final)

13:15 - 13:25	iQFOiL Youth (Final)
13:30 - 13:50	Wingfoil Freestyle Performance
13:55 - 14:05	iQFOiL Women (Semi-Final)
14:10 - 14:20	iQFOiL Men (Semi-Final)
14:25 - 14:45	Wingfoil Freestyle Performance
14:50 - 15:00	iQFOiL Women (Final)
15:05 - 15:15	iQFOiL Men (Final)
15:30 - 16:30	Closing Ceremony & Prize Giving

15. FLEETS, CLASS FLAGS & COLORS

15.1. The Class flag used for each group will be as follow

Class	Flag
Minim	Brown Flag with Black Letter "Foil"
Wingfoil	Green Flag with Black Letter "Wing"
iQFOiL Junior	Yellow Flag with Black Letter "Foil"
iQFOiL Youth	Blue Flag with Black Letter "Foil"
iQFOiL Women	Pink Flag with Black Letter "Foil"
iQFOiL Men	White Flag with Black Letter "Foil"

16. RACING AREAS

- 16.1. NoR & SIs Appendix shows the racing area for both Slalom and Freestyle programs.
- 16.2. Boards shall not sail beyond the race boundary.
- 16.3. The racing area is an area extending 25 meters beyond the course in which a competitor normally sails while racing.
- 16.4. [DP] Boards not racing shall avoid the racing area.

17. COURSES

- 17.1. NoR & SIs Appendix shows the course, the order in which the marks are to be passed and the side on which each mark is to be left.

18. MARKS

- 18.1. The mark shall be

Mark	Description, Color and Shape	
Starting Marks	Starboard End <ul style="list-style-type: none"> • Race Committee Signal Boat with a Orange Flag; • or Orange Cylindrical Mark with a Orange Flag 	Pin-End <ul style="list-style-type: none"> • Race Committee Pin-End Boat with a Orange Flag; • or Orange Cylindrical Mark with a Orange Flag
Mark 1/2/3/4	Orange Cylindrical Mark	
Finishing Marks	<ul style="list-style-type: none"> • Race Committee Signal Boat with Blue Flag; and • White Spherical Mark 	
New Marks	<ul style="list-style-type: none"> • Red Cylindrical Mark 	

18.2. A vessel that is a mark may not be anchored, but held in place by the use of an engine. This will not be grounds for redress, provided the vessel remains close to her correct position. This changes RRS 62.1(a).

19. THE START FOR SLALOM

19.1. Races will be started using the following signals. This changes RRS Appendix B3 rules 26.1 and 26.2. Times shall be taken from the visual signal(s); the absence of a sound signal shall be disregarded.

Minutes before Starting Signal	Visual Signal Displayed	Visual Signal Removed	Sound Signal	Means
3	Class Flag(s) + Preparatory Flag + Heat number displayed (if applicable)	-	One	Attention Signal
2	Red Flag with '2'	-	One	Warning Signal
1	Yellow Flag with '1'	Red Flag with '2' and Preparatory Flag	One Long	Preparatory Signal
0	-	Yellow Flag with '1' and Class Flag(s)	One	Starting Signal

19.2. To alert boards that a race or sequence of races will begin soon, an orange flag will be displayed (with one sound) for at least 1 minute before an attention signal is made.

19.3. [DP] When a starting sequence is in progress, boards whose attention signal has not been made shall avoid the starting area. The starting area is defined as an area extending 25 meters from the starting line and marks in all directions.

- 19.4. A competitor starting later than 1 minutes after her starting signal will be scored Did Not Start (DNS) without a hearing. This changes RRS A4 and A5.
- 19.5. The attention signal for each succeeding race will be made as soon as practicable after the finish of the previous race.
- 19.6. If flag I has been displayed, and any part of a board's hull, crew or equipment is in the triangle formed by the ends of the starting line and the first mark during the last minute before her starting signal, she shall thereafter sail from the course side across an extension to the pre-start side before starting. This changes RRS 30.1.
- 19.7. When an individual recall has been signaled and a board does not comply with RRS 29.1 or a board breaks RRS 30.3 or 30.4, the race committee will display her sail number on the race committee signal boat before the first competitor has finished the race. Failure to display the sail numbers(s) will not be grounds for redress. This changes RRS 62.1(a).

20. CHANGE OF THE NEXT LEG OF THE COURSE FOR SLALOM

- 20.1. To change the next leg of the course, the race committee will lay a new mark (or move the finishing line) and remove the original mark as soon as practicable. When in a subsequent change a new mark is replaced, it will be replaced by an original mark.

21. THE FINISH FOR SLALOM

- 21.1. The finishing line will be between finishing marks.

22. PENALTY SYSTEM

- 22.1. Penalties for breaches of class rules or rules in the NoR/SI marked [DP] or [SP], should the case go to a hearing, are at the discretion of the International Jury.
- 22.2. For breaches of NoR/SI marked [SP] and breaches of the Class Rules: C.1.1.(a), C.3.2.(a) (i) (ii) (iii), C. 3.3.(i), C.3.4, C.10.2.(b)(c), D.2.(a), the race committee or technical committee may apply a standard penalty without a hearing to the race(s) closest in time to the incident. The scores of other boards shall not be changed; therefore, two boards may receive the same score. However, the race committee or technical committee may protest a board when they consider the standard penalty to be inappropriate. A board that has been penalized with a standard penalty can neither be protested for the same incident by another board nor can another board request redress for this race committee action. This changes RRS 60.1, 63.1 and Appendix A5. breaches of NoR/SI marked [SP] and breaches of the Class Rules: C.1.1.(a), C.3.2.(a) (i) (ii) (iii), C. 3.3.(i), C.3.4, C.10.2.(b)(c), D.2.(a), the race committee or technical committee may apply a standard penalty without a hearing to the race(s) closest in time to the incident. The scores of other boards shall not be changed; therefore, two boards may receive the same score. However, the race committee or technical committee may protest a board when they consider the standard penalty to be inappropriate. A board that has been penalized with a standard penalty can neither be protested for the same incident by another board nor can another

board request redress for this race committee action. This changes RRS 60.1, 63.1 and Appendix A5.

22.3. Appendix B includes the list of breaches and the associated standard penalties

23. TIME LIMITS AND TARGET TIMES

23.1. The target time for each classes are as follow:

Target Time	Time Limit	Finish Window
4-5 minutes	6 minutes	3 minutes

23.2. Boards failing to finish within the time stated in the 'Finish Window', after the first competitor in that group sails the race according to RRS 28, will be scored Did Not Finish (DNF). This changes RRS 35 and Appendix A5.

24. HEARING REQUESTS

24.1. Please refer to NoR & SIs 1.2.1 and 1.2.2.

25. SCORING

25.1. Scoring will be according to the RRS Appendix A.

25.2. For iQFOiL Men and Women division, no point will be carried forward from Semi-Final to Final.

26. SAFETY REGULATIONS

26.1. Personal buoyancy or impact vest and helmet, as well as whistle, are mandatory for every competitor while afloat.

26.2. Competitors not racing shall inform the race office.

26.3. A competitor that retires from a race shall notify the race committee as soon as possible.

27. LOCATIONS OF IMPORTANCE

27.1. NoR & SIs Appendix shows the location for registration, skipper meeting, athlete preparation area and official notice board.

28. OFFICIAL VESSELS

28.1. Official boats will be marked as follows:

Official Boat	Visual Indication
Race Committee Boat	White Flag with black letter 'RC'
Rescue Boat	White Flag with black letter 'RESCUE'
Water Supply Boat	White Flag with black letter 'WATER'
Measurer Boat	White Flag with black letter 'MEASURER'
Jury Boat	White Flag with black letter 'JURY'

29. ENVIRONMENTAL RESPONSIBILITY

- 29.1. As sailors, we seek to protect and restore our oceans and coastal waters. Boards shall not intentionally put trash in the water. Trash may be placed aboard race committee boats or other official vessels.

30. PRIZES

- 30.1. Medals will be awarded to the first 3 competitors for each division.

31. DISCLAIMER OF LIABILITY

- 31.1. Rule 3 of the RRS states: 'The responsibility for a board's decision to participate in a race or to continue to race is hers alone.' Sailing is by its nature an unpredictable sport and therefore inherently involves an element of risk. By taking part in the event, each competitor agrees and acknowledges that:
- 31.1.1. They are aware of the inherent element of risk involved in the sport and accept responsibility for the exposure of themselves and their board to such inherent risk while taking part in the event;
 - 31.1.2. They are responsible for the safety of themselves and their board and their other property whether afloat or ashore;
 - 31.1.3. They accept responsibility for any injury, damage or loss to the extent caused by their own actions or omissions;
 - 31.1.4. Their board is in good order, equipped to sail in the event and they are fit to participate;
 - 31.1.5. The provision of a race management team, patrol boats and other officials and volunteers by the race organizer does not relieve them of their own responsibilities; and
 - 31.1.6. The fact that the race committee or technical committee conducts inspections, or not, of a boat does not reduce the responsibilities of each competitor set out in this NoR & SIs.

32. ADVERTISING AND INSIGNIA

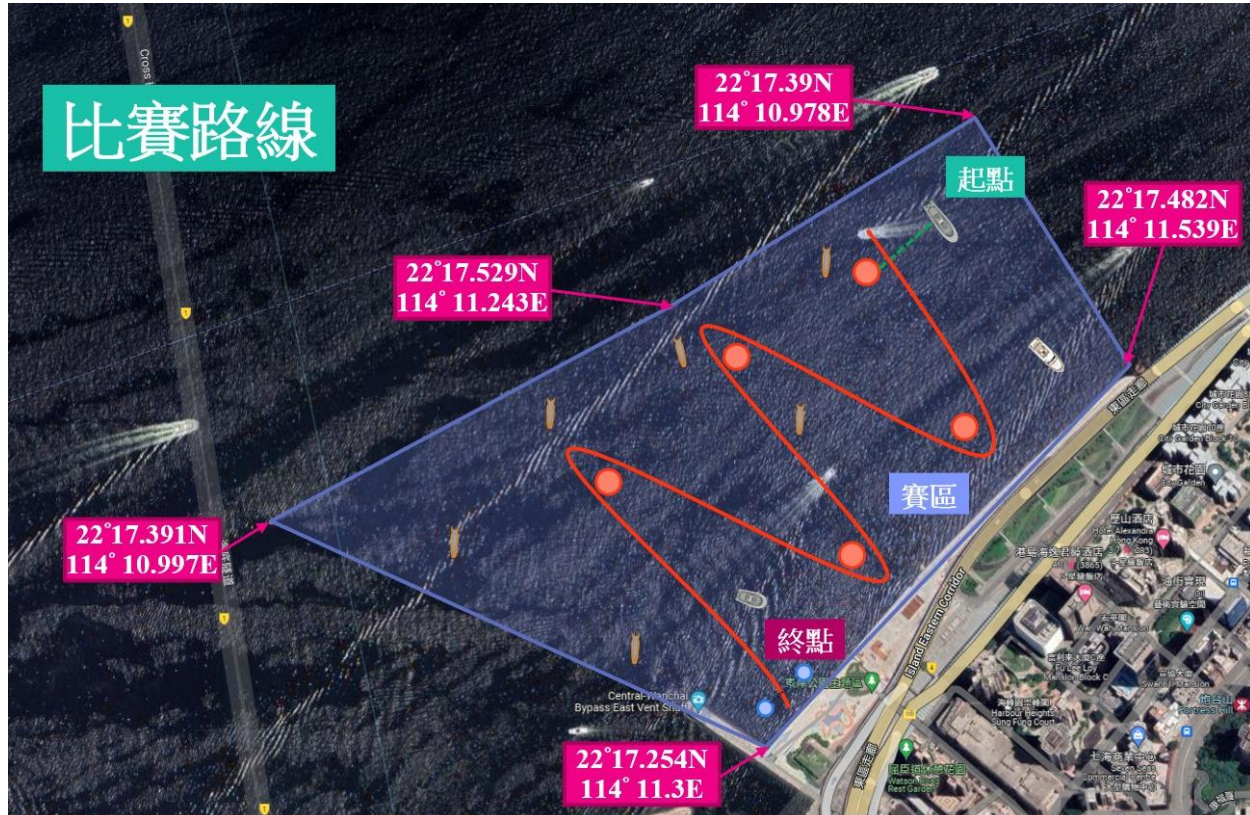
- 32.1. Sails and competitors may be required to carry advertising for event sponsors, which will be supplied by the local organizing committee in accordance with World Sailing Regulation 20 - Advertising Code
- 32.2. On the sail the event sponsor's branding shall be placed immediately below batten #5 and as close to the leech as possible but without overlapping the sail corner reinforcement. Competitors shall not cut or adapt the stickers in any way.
- 32.3. Competitors shall provide their own self-adhesive National Flags on the sail and any replacements.

33. INSURANCE

- 33.1. Each participating board shall be insured with valid third party insurance.

Appendix A

Racing Area and Course for Slalom



Sailing Area for Freestyle

Sailors will be guided by race committee boats during the performance session.

Location of Importance

